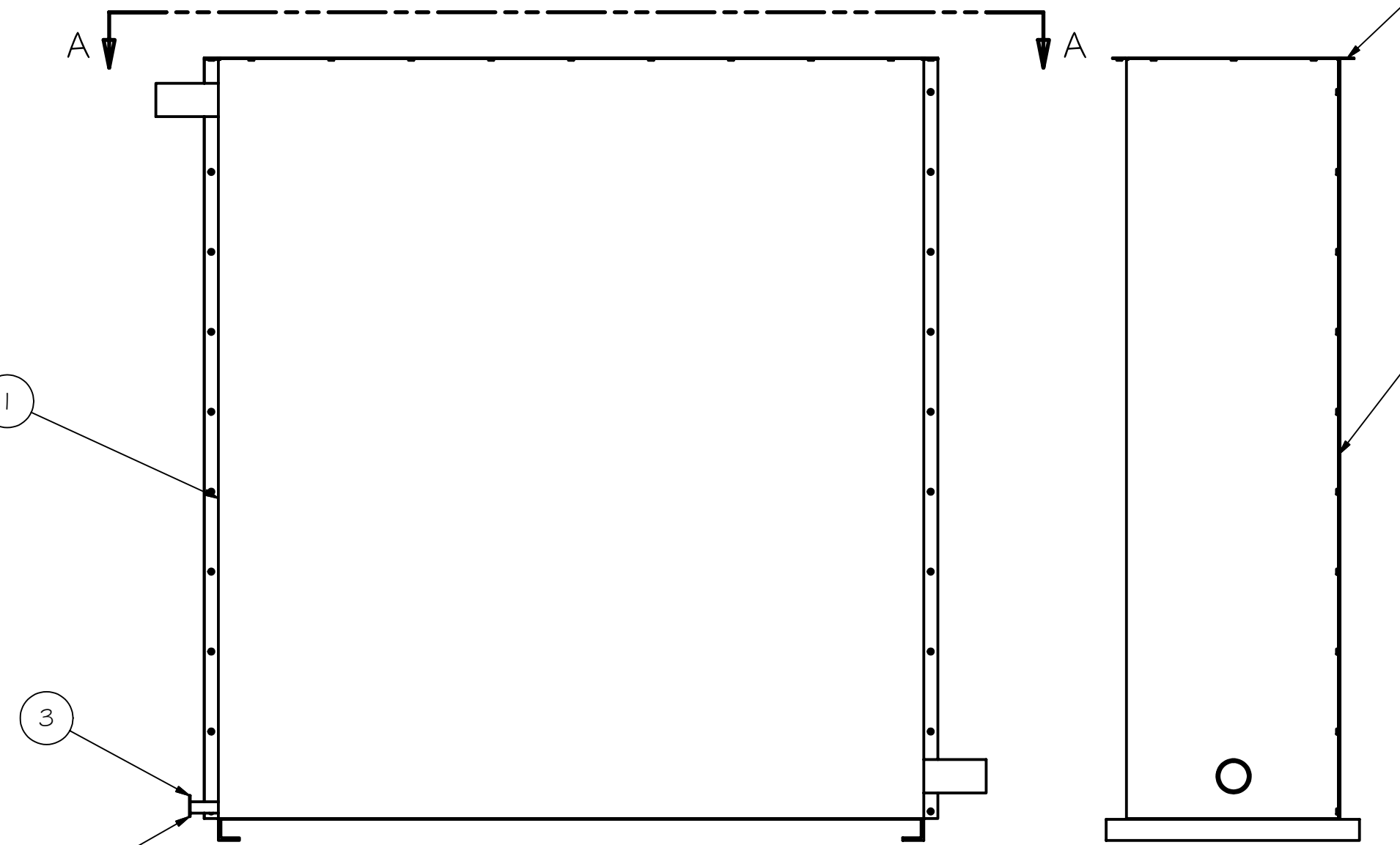
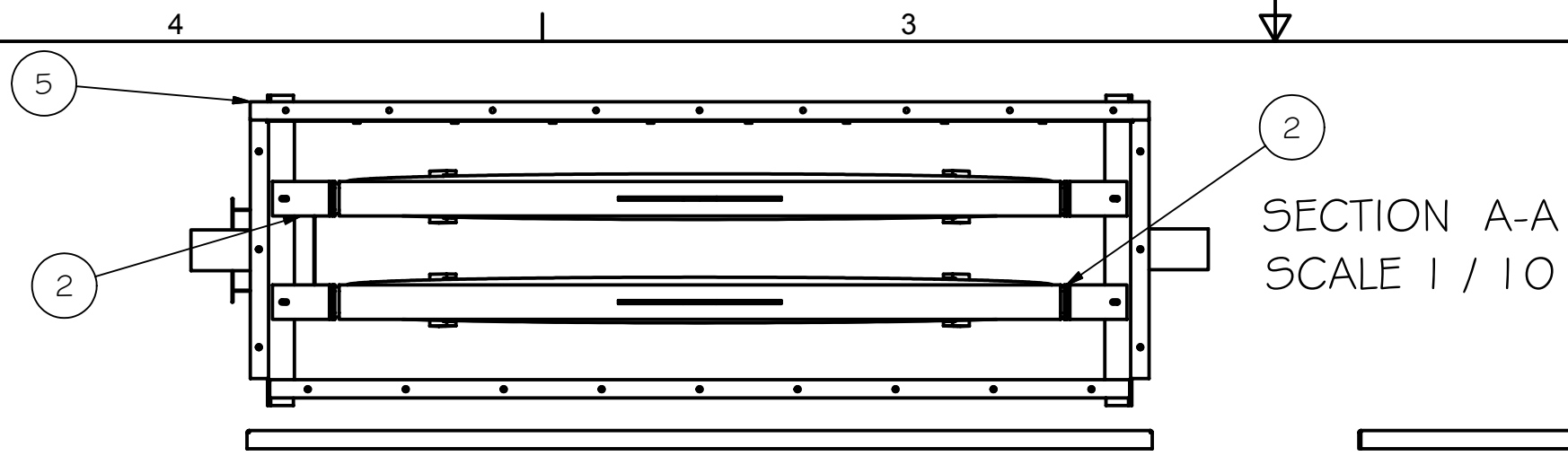


REV	DRWN	CHK'D	DATE	DESCRIPTION
B	VRW	VRW	7/27/05	ADD SHEET 2



Parts List			
ITEM	QTY	PART NUMBER	DESCRIPTION
1	1	SG3510	HARDENING TANK WELDMENT
2	2	SG4100	ADC OPTIC HOLDER ASSEMBLY
3	1	SG3515	HARDENING TANK DRAWER
4	1	SG3523	HARDENING TANK TOP ASSEMBLY
5	1	SG3512	HARDENING TANK SIDE COVER
6	45	10-24_NUT_INSERT	10-24 NUT INSERT

TOLERANCES UNLESS OTHERWISE NOTED:
 FRACTIONAL: 0"-6": ±1/64" 6"-24": ±1/32"
 24"+: ±1/16"
 DECIMAL: X.X: ±0.1000" X.XX: ±0.0100"
 X.XXX: ±0.0050" X.XXXX: ±0.0001"
 ANGLES: ±0.5° FINISH: 125 MICRO INCHES
 BREAK ALL SHARP EDGES & CORNERS 1/64" MAX

	DRAWN	vernon	7/20/2005	Sol-Gel Facility	
	CHECKED			TITLE	
	DESIGNED	vernon		HARDENING BOX ASSEMBLY	
	ENGINEER	VRW		PROJECT CODE	DWG NO
	QTY:			SG0001	SG3525
				REV	B
					1/2

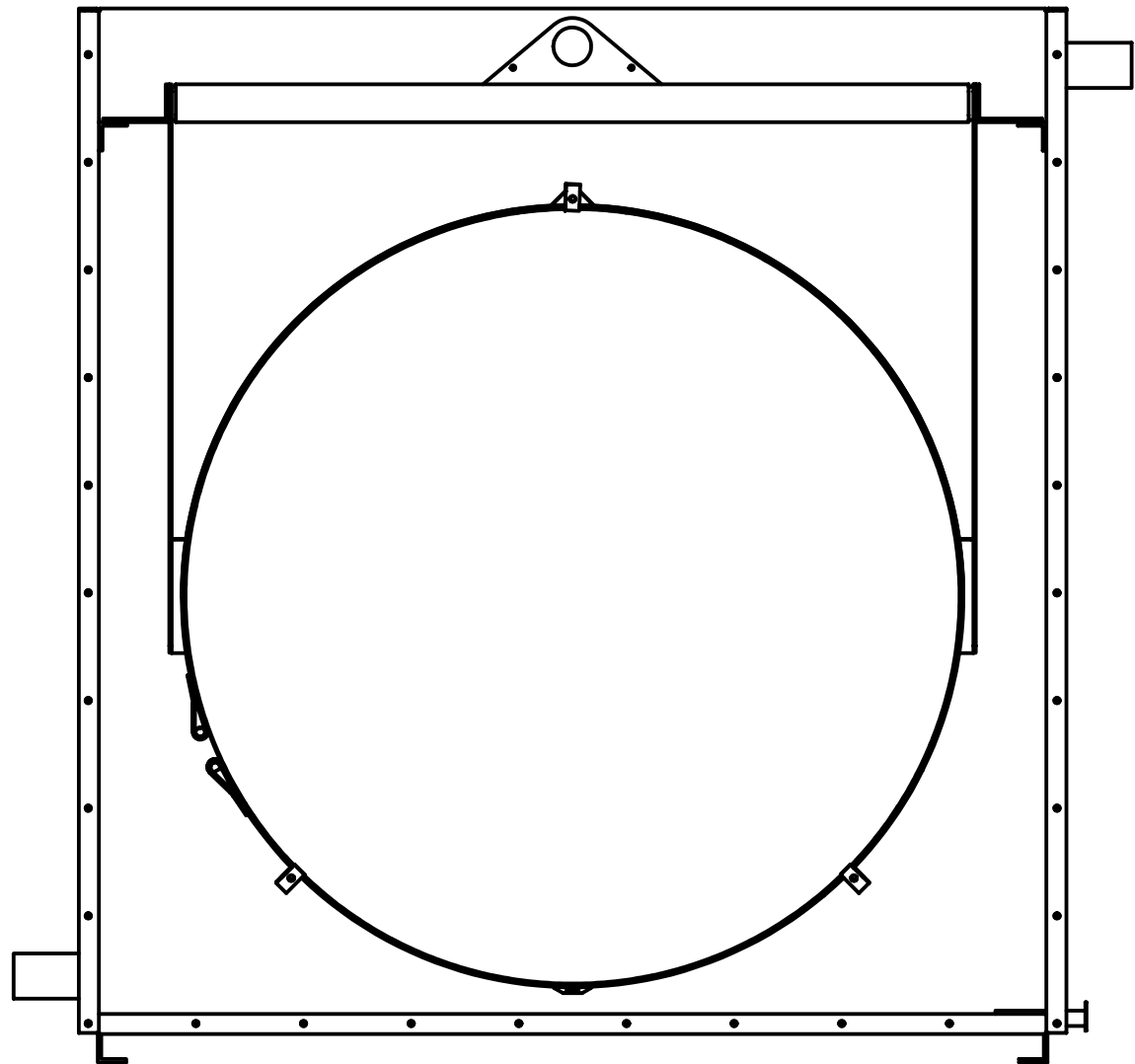
4

3


2

1

REV	DRWN	CHK'D	DATE	DESCRIPTION



SHOWN WITHOUT SIDE OR TOP COVER


 VIEW B-B
 SCALE 1 / 10

TOLERANCES UNLESS OTHERWISE NOTED:
 FRACTIONAL: 0"-6": ±1/64" 6"-24": ±1/32"
 24"+: ±1/16"
 DECIMAL: X.X: ±0.1000" X.XX: ±0.0100"
 X.XXX: ±0.0050" X.XXXX: ±0.0001"
 ANGLES: ±0.5° FINISH: 125 MICRO INCHES
 BREAK ALL SHARP EDGES & CORNERS 1/64" MAX

MATERIAL	FINISH



DRAWN	vernon	7/20/2005
CHECKED		
DESIGNED	vernon	
ENGINEER	VRW	

PROJECT CODE	Sol-Gel Facility
TITLE	HARDENING BOX ASSEMBLY

QTY:		PROJECT CODE	SG0001	DWG NO	SG3525	REV	B
		NEXT ASSY					2/2

4

3

2

1

B

B

A

A