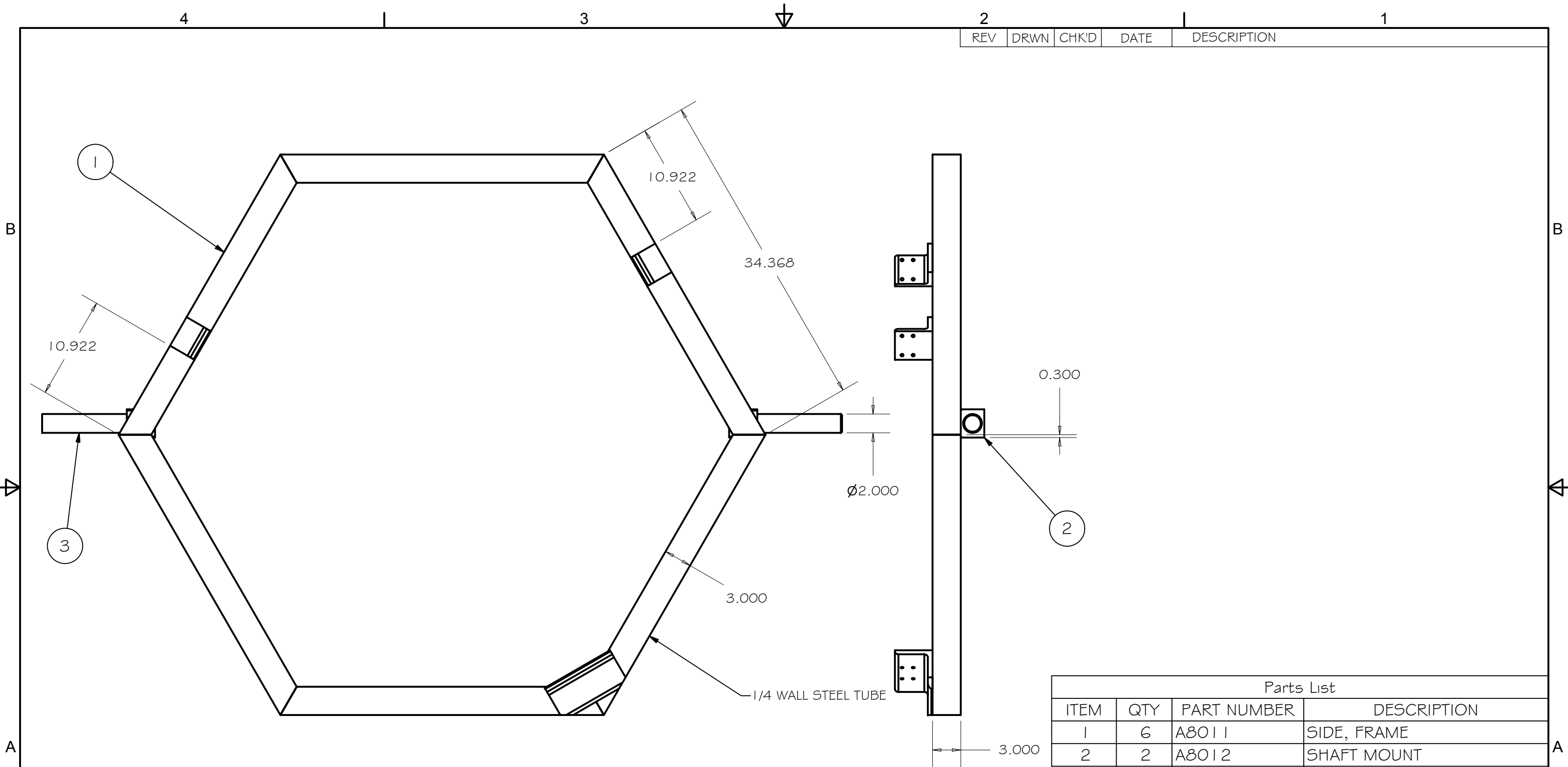


| REV | DRWN | CHK'D | DATE | DESCRIPTION |
|-----|------|-------|------|-------------|
| | | | | |



SCALE 1 / 10

| Parts List | | | |
|------------|-----|-------------|-----------------|
| ITEM | QTY | PART NUMBER | DESCRIPTION |
| 1 | 6 | A8011 | SIDE, FRAME |
| 2 | 2 | A8012 | SHAFT MOUNT |
| 3 | 2 | A8050 | SHAFT, TEST |
| 5 | 2 | A8036 | HARDPOINT MOUNT |
| 6 | 1 | A8037 | HARDPOINT MOUNT |

TOLERANCES UNLESS OTHERWISE NOTED:
 FRACTIONAL: 0"-6": ±1/64" 6"-24": ±1/32"
 24"+: ±1/16"
 DECIMAL: X.X: ±0.1000" X.XX: ±0.0100"
 X.XXX: ±0.0050" X.XXXX: ±0.0001"
 ANGLES: ±0.5° FINISH: 125 MICRO INCHES
 BREAK ALL SHARP EDGES & CORNERS 1/64" MAX

| | |
|----------|--------|
| MATERIAL | FINISH |
| STEEL | |



| | | |
|----------|--------|----------|
| DRAWN | vernon | 9/4/2003 |
| CHECKED | | |
| DESIGNED | vernon | |
| ENGINEER | vernon | |
| | | QTY: 1 |

Cassegrain ADC

TITLE: FRAME, TEST

| | | |
|--------------|--------|-----|
| PROJECT CODE | DWG NO | REV |
| A8001 | A8010 | A |
| NEXT ASSY | | |
| | | |