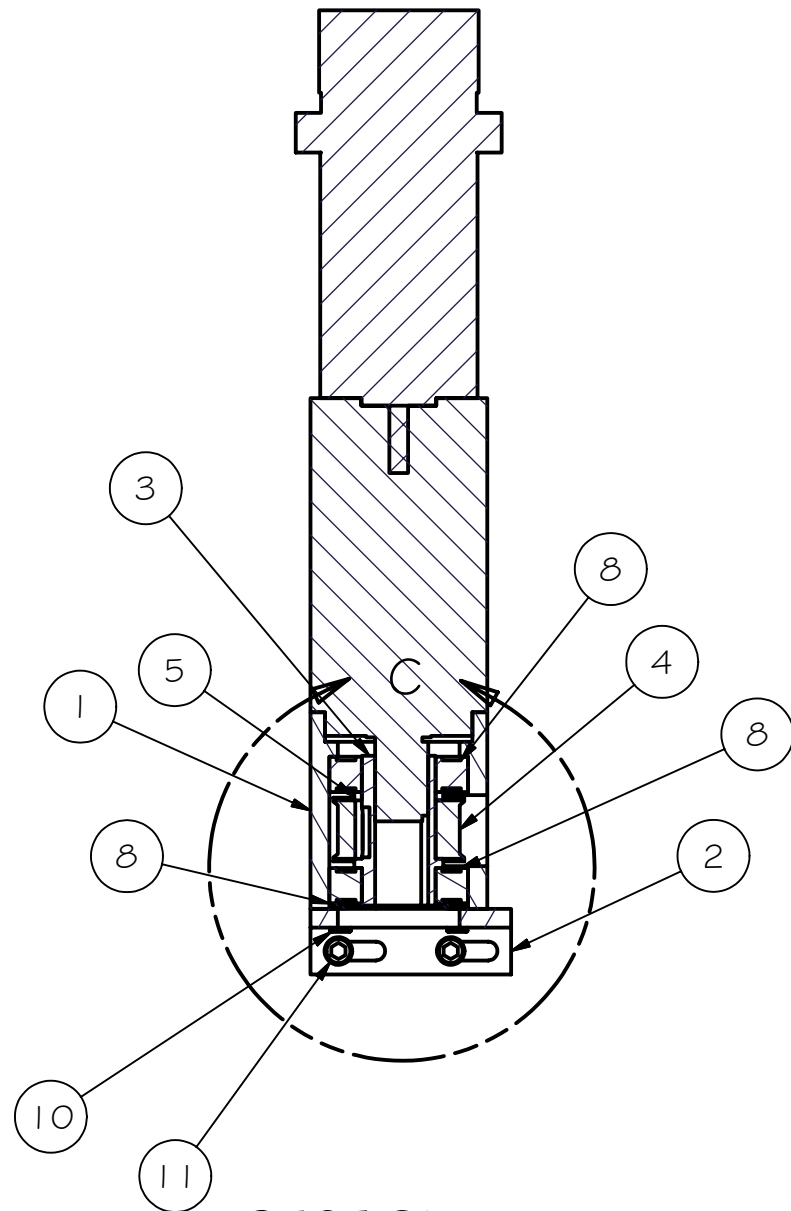
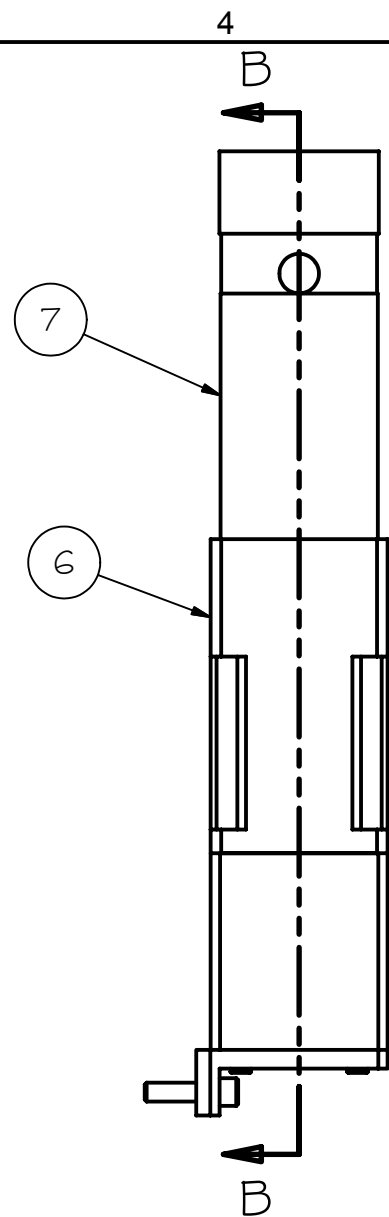
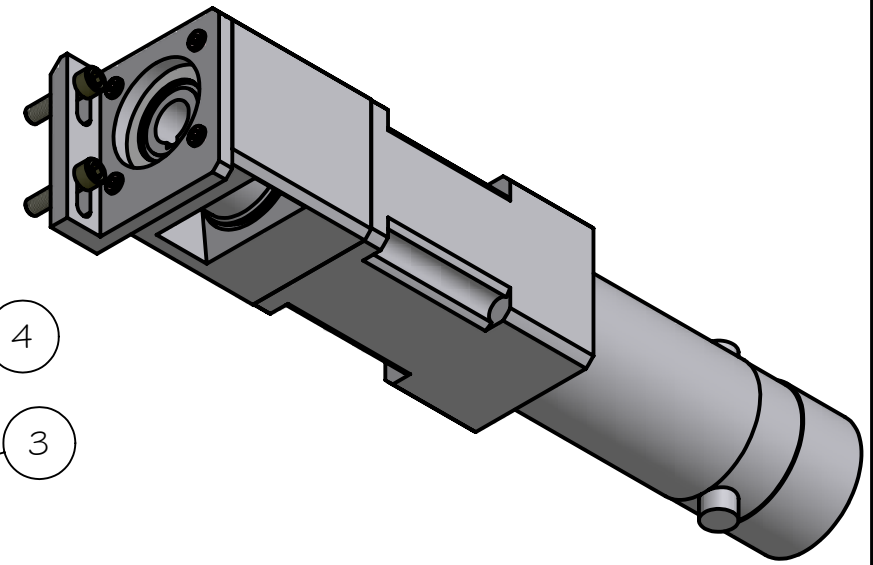
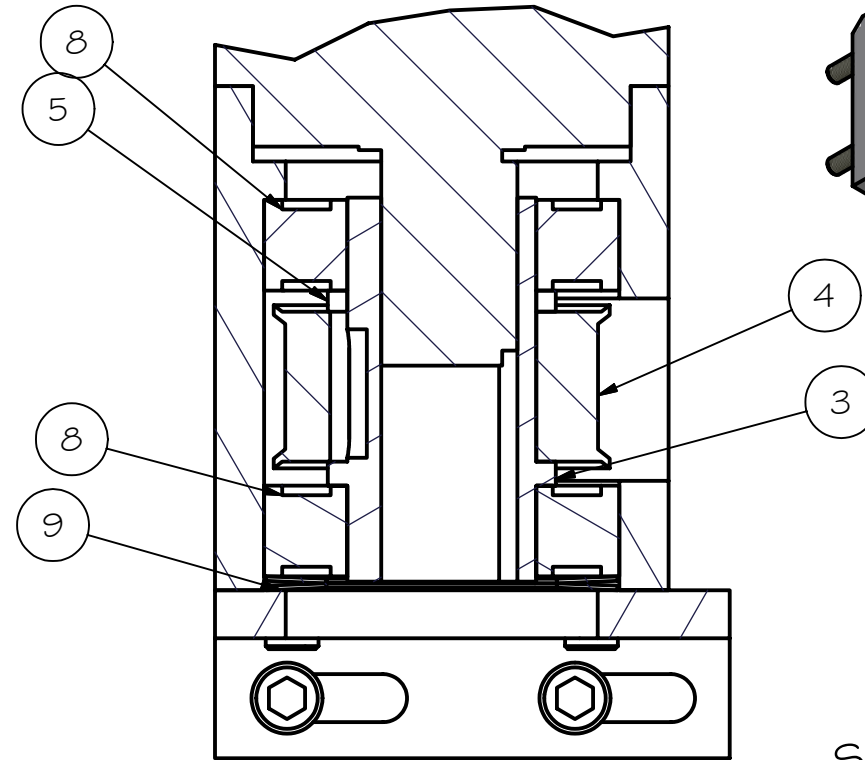


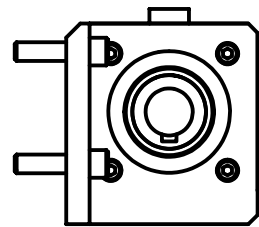
REV	DRWN	CHK'D	DATE	DESCRIPTION
B	VRW	VRW	7/26/04	CHANGE BEARINGS & BOLT PATTERN, ADD SPRINGS
C	VRW	VRW	10/29/04	ADD VIEW C, REVERSE A1312 FOR ASSEMBLY



SECTION B-B  
SCALE 0.39 : 1



DETAIL C  
SCALE 1 : 1



Parts List			
ITEM	QTY	PART NUMBER	DESCRIPTION
1	1	A1310	PULLEY HOUSING
2	1	A1311	HOUSING COVER
3	1	A1312	SHAFT, MOTOR PULLEY
4	1	A1313	PIC PULLEY PTO26G08L15T, MOTOR
5	1	A1314	BEARING RETAINER
6	1	GEARBOX	BAYSIDE PS-60 GEARBOX
7	1	MOTOR	Galil_50-1000
8	2	skf_6005-2RS1	SKF 16005
9	2	6005 SPRING	McMASTER CARR 94065K84
10	4	SocHeadCapScrew-MET	
11	2	SHCS-English-UNF	

<p>TOLERANCES UNLESS OTHERWISE NOTED:          FRACTIONAL: 0"-6": ±1/64" 6"-24": ±1/32"          24"+: ±1/16"          DECIMAL: X.X: ±0.1000" X.XX: ±0.0100"          X.XXX: ±0.0050" X.XXXX: ±0.0001"          ANGLES: ±0.5° FINISH: 125 MICRO INCHES          BREAK ALL SHARP EDGES &amp; CORNERS 1/64" MAX</p>	<p>DRAWN: vernon          8/15/2003</p>	<p>Cassegrain ADC</p>
	<p>CHECKED: [blank]          DESIGNED: vernon          ENGINEER: vernon</p>	
<p>MATERIAL: [blank]          FINISH: [blank]</p>	<p>QTY: 1</p>	<p>PROJECT CODE: [blank]          DWG NO: A1300</p>



REV C  
1/1