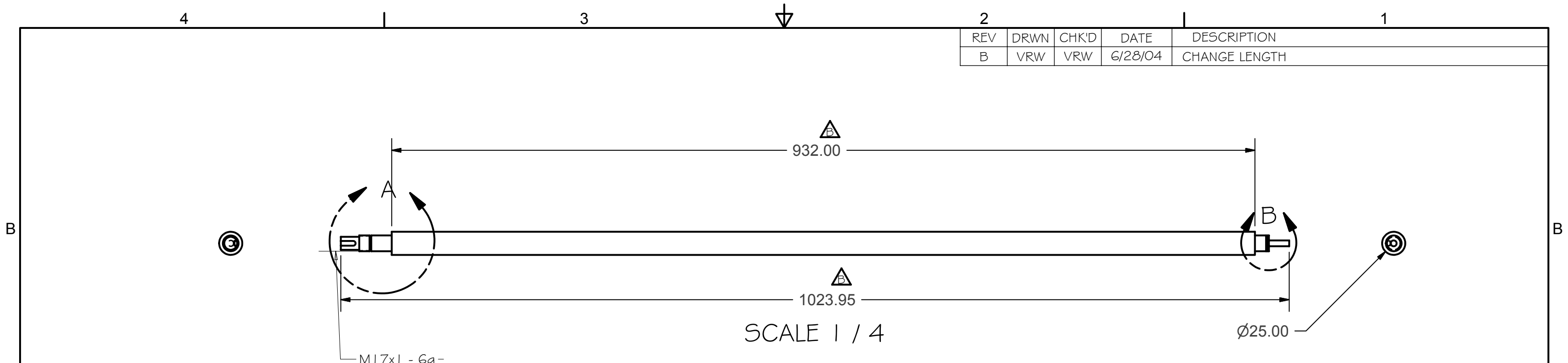
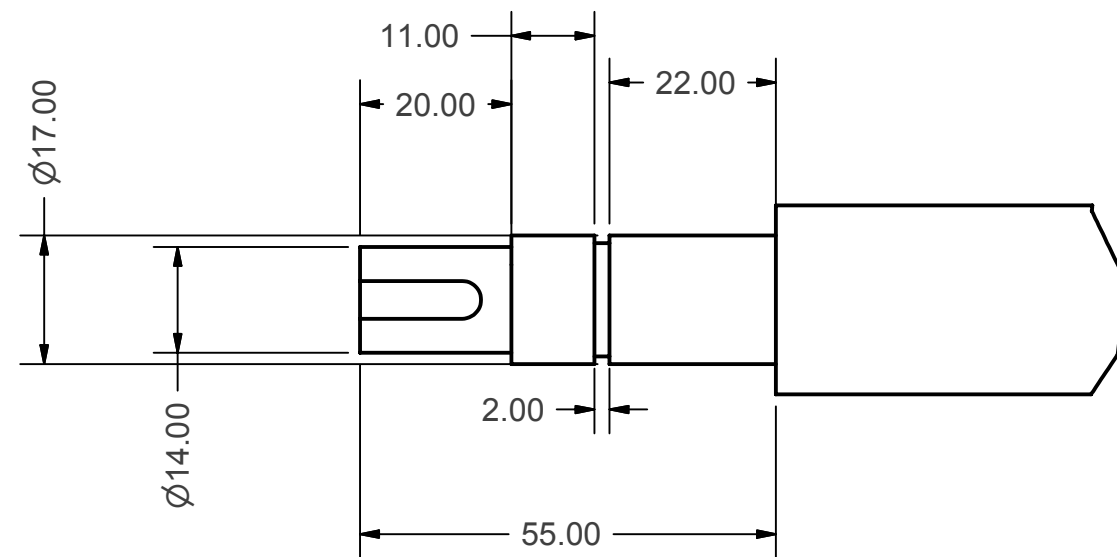


REV	DRWN	CHK'D	DATE	DESCRIPTION
B	VRW	VRW	6/28/04	CHANGE LENGTH

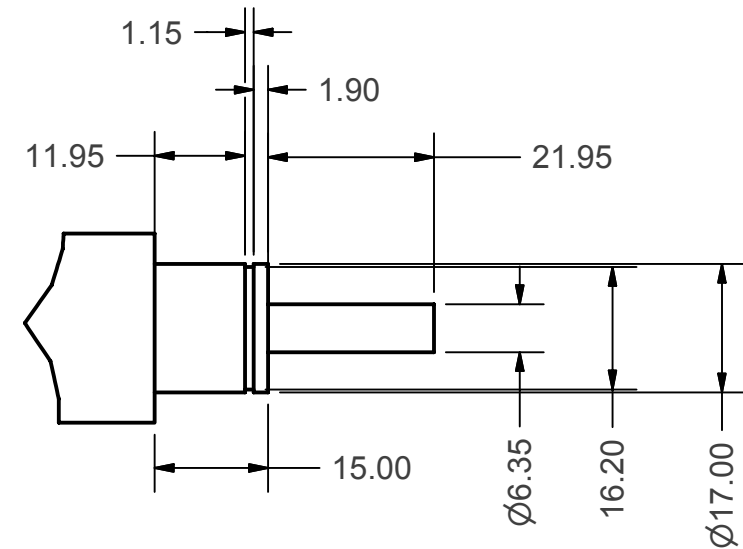


NOTES:  
THK BNF 2505-5RR G2FM+ I024L C5 AP-CF BALL SCREW



RECOMMENDED SHAFT END SHAPE A  
SHORTENED 5 MM  
P.100 THK CATALOG 75-1 BE

DETAIL A  
SCALE 1 : 1



RECOMMENDED SHAFT END SHAPE C  
P. 104 THK CATALOG 75-1 BE  
WITH Ø6.35 mm EXTENSION

DETAIL B  
SCALE 1 : 1

TOLERANCES UNLESS OTHERWISE NOTED:  
FRACTIONAL: 0"-6": ±1/64" 6"-24": ±1/32"  
24"+: ±1/16"  
DECIMAL: X.X: ±0.1000" X.XX: ±0.0100"  
X.XXX: ±0.0050" X.XXXX: ±0.0001"  
ANGLES: ±0.5° FINISH: 125 MICRO INCHES  
BREAK ALL SHARP EDGES & CORNERS 1/64" MAX

MATERIAL	FINISH
----------	--------



DRAWN	vernon	2/3/2004
CHECKED		
DESIGNED	vernon	
ENGINEER		

PROJECT CODE		DWG NO	REV
NEXT ASSY		A1210	B
A1200			1/1

Cassegrain ADC

BALL SCREW, FWD

A1210