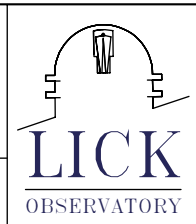


| REV | DRWN | CHK'D | DATE | DESCRIPTION |
|-----|------|-------|---------|----------------------------|
| B | VRW | VRW | 7-14-04 | SEALED BEARING PART NUMBER |

| Parts List | | | |
|------------|-----|---------------|--------------------------------------|
| ITEM | QTY | PART NUMBER | DESCRIPTION |
| 1 | 1 | A1210 | THK 2505-5 SCREW, FWD |
| 2 | 1 | A1211 | THK 2505-5 SCREW, AFT |
| 3 | 1 | A1212 | BEARING HOUSING |
| 4 | 2 | A1213 | BEARING CAP |
| 5 | 1 | A1214 | BEARING HOUSING, AFT |
| 7 | 1 | A1216 | SPACER |
| 8 | 1 | A1217 | SPACER |
| 9 | 2 | A1218 | SLEEVE |
| 10 | 1 | A1219 | PIC PULLEY PTO26G08L1 5T |
| 11 | 6 | SKF 6203-2RS1 | SKF 6203 SEALED BEARING |
| 12 | 2 | SKF_N-03 | SKF N-03 |
| 13 | 2 | SKF_W-03 | SKF W-03 |
| 14 | 4 | WAVE SPRING | WAVE SPRING ,McMaster-Carr # 9714K66 |

TOLERANCES UNLESS OTHERWISE NOTED:
 FRACTIONAL: 0"-6": ±1/64" 6"-24": ±1/32"
 24"+: ±1/16"
 DECIMAL: X.X: ±0.1000" X.XX: ±0.0100"
 X.XXX: ±0.0050" X.XXXX: ±0.0001"
 ANGLES: ±0.5° FINISH: 125 MICRO INCHES
 BREAK ALL SHARP EDGES & CORNERS 1/64" MAX



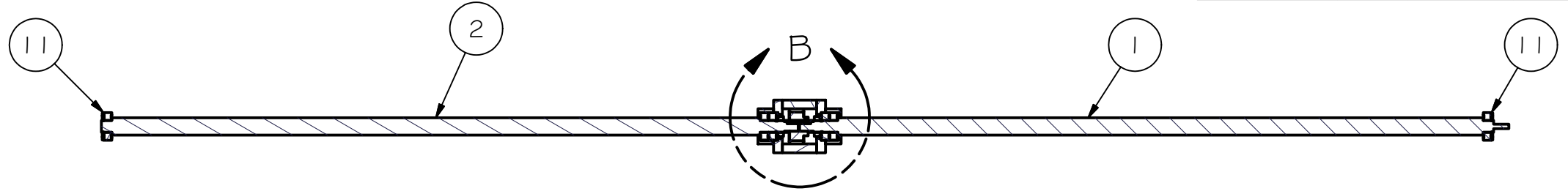
DRAWN: vernon 8/20/2003
 CHECKED: _____
 DESIGNED: vernon
 ENGINEER: vernon

Cassegrain ADC
 TITLE: BALL SCREW ASSEMBLY

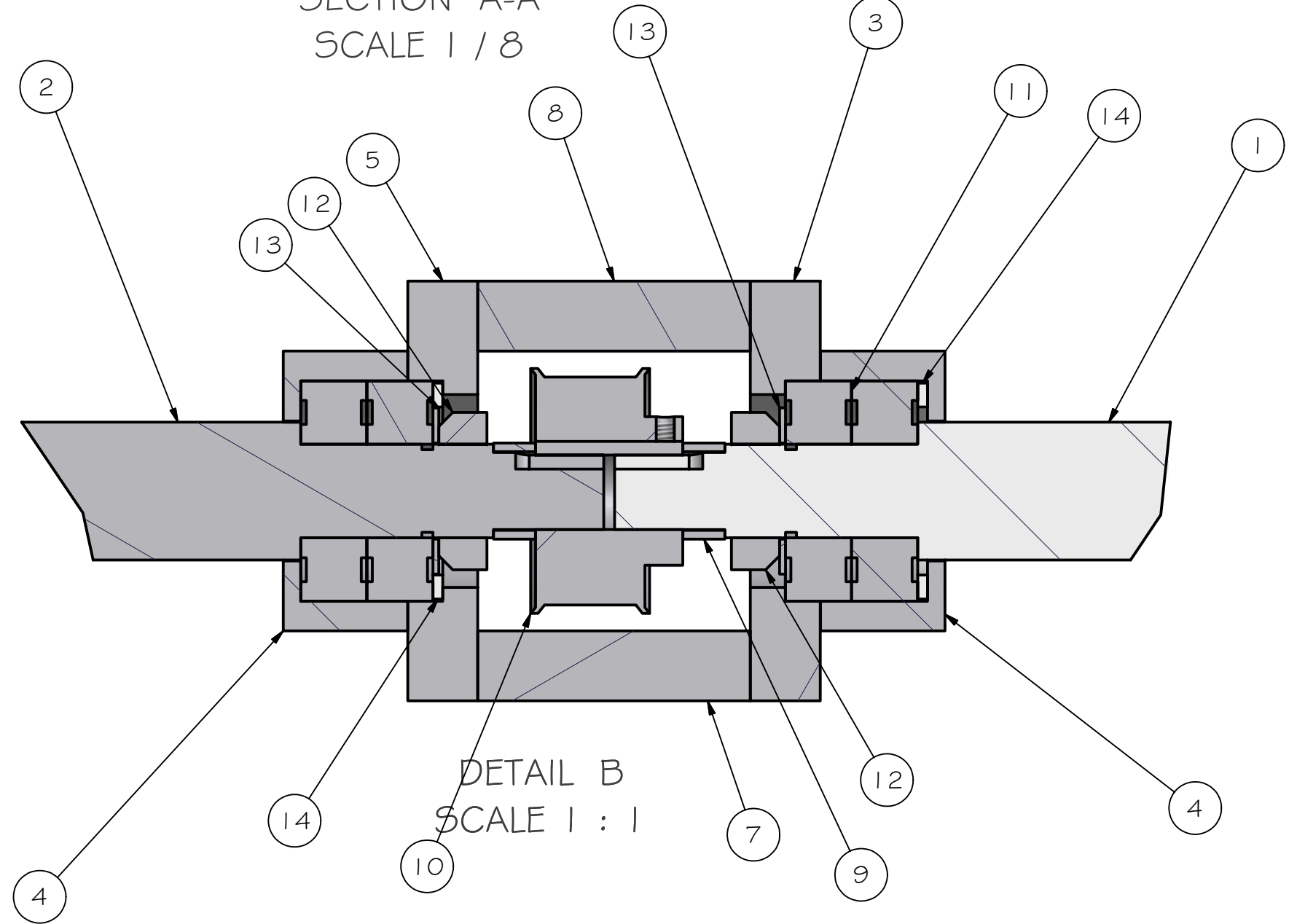
| | | | | |
|----------|--------|--------------|--------|----------|
| MATERIAL | FINISH | PROJECT CODE | DWG NO | REV |
| | | AI000 | A1200 | B 1/2 |

4 | 3 | 2 | 1

| REV | DRWN | CHK'D | DATE | DESCRIPTION |
|-----|------|-------|------|-------------|
| | | | | |



SECTION A-A
SCALE 1 / 8



DETAIL B
SCALE 1 : 1

TOLERANCES UNLESS OTHERWISE NOTED:
 FRACTIONAL: 0"-6": ±1/64" 6"-24": ±1/32"
 24"+: ±1/16"
 DECIMAL: X.X: ±0.1000" X.XX: ±0.0100"
 X.XXX: ±0.0050" X.XXXX: ±0.0001"
 ANGLES: ±0.5° FINISH: 125 MICRO INCHES
 BREAK ALL SHARP EDGES & CORNERS 1/64" MAX

| | |
|----------|--------|
| MATERIAL | FINISH |
| | |



| | | |
|----------|--------|-----------|
| DRAWN | vernon | 8/20/2003 |
| CHECKED | | |
| DESIGNED | vernon | |
| ENGINEER | vernon | |
| QTY: 1 | | |

| | |
|------------------------------|-----------------|
| Cassegrain ADC | |
| TITLE BALL SCREW ASSEMBLY | |
| PROJECT CODE A1000 | DWG NO A1200 |
| REV B | 2/2 |