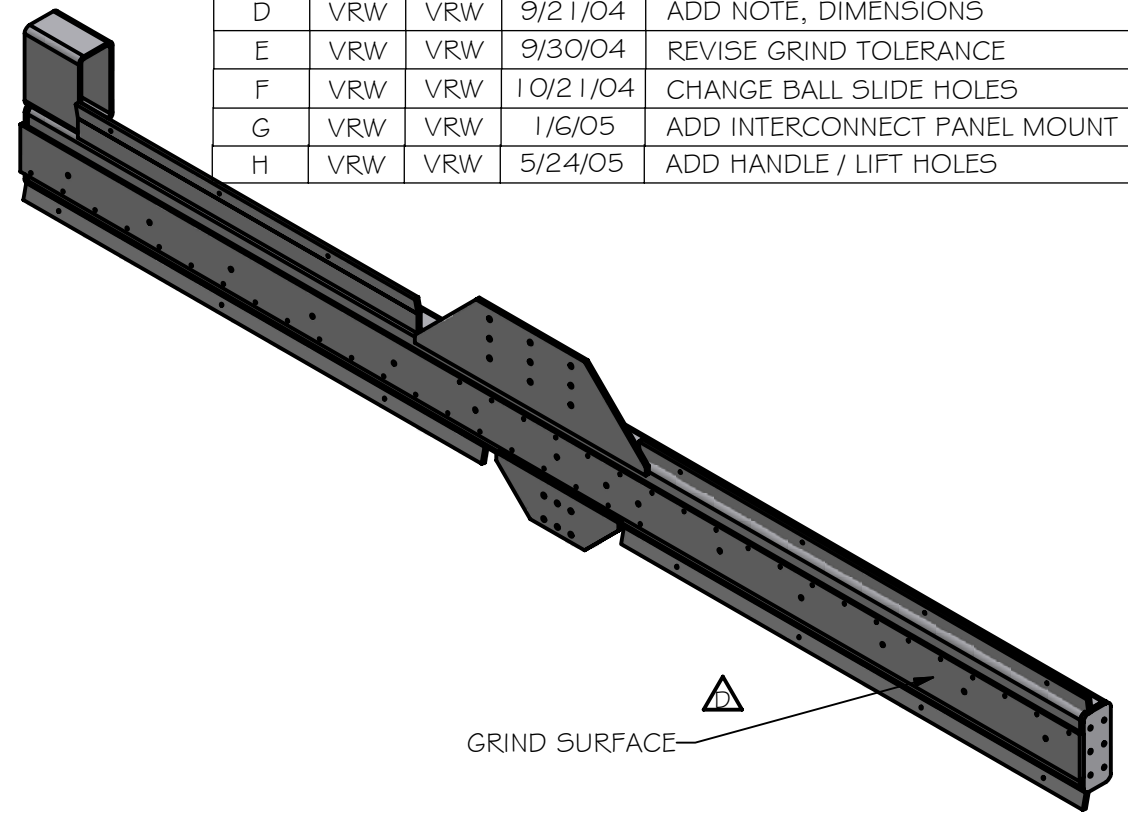


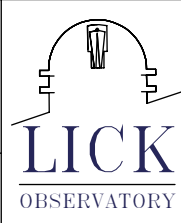
REV	DRWN	CHK'D	DATE	DESCRIPTION
B	VRW	VRW	6/21/04	CHANGE ROLLERS & LENGTH
C	VRW	VRW	8/31/04	REVISE ROLLER POSITION
D	VRW	VRW	9/21/04	ADD NOTE, DIMENSIONS
E	VRW	VRW	9/30/04	REVISE GRIND TOLERANCE
F	VRW	VRW	10/21/04	CHANGE BALL SLIDE HOLES
G	VRW	VRW	1/6/05	ADD INTERCONNECT PANEL MOUNT HOLES, SH 5
H	VRW	VRW	5/24/05	ADD HANDLE / LIFT HOLES



Parts List			
ITEM	QTY	PART NUMBER	DESCRIPTION
1	1	A1112	GUSSETT, UPPER
2	1	A1113	GUSSETT, LOWER
3	1	A1114	PICKUP TUBE
4	2	A1124	ROLLER MOUNT, FLAT
5	1	A1116	RAIL BASE
6	1	A1117	CLADDING STRIP 1
7	1	A1118	CLADDING STRIP 2
8	1	A1119	CLADDING STRIP 3
9	1	A1120	CLADDING STRIP 4
10	1	A1121	CLADDING STRIP 5
11	1	A1122	PICKUP HOLE
12	2	A1123	TUBE END CAP
13	1	A1131	SUPPORT TUBE, RIGHT

- NOTES:
- 1) COMPLETE ALL WELDS
 - 2) STRESS RELIEVE
 - 3) BLANCHARD GRIND SURFACE OF ITEM 5
 - 4) MACHINE HOLES

TOLERANCES UNLESS OTHERWISE NOTED:
 FRACTIONAL: 0"-6": ±1/64" 6"-24": ±1/32"
 24"+: ±1/16"
 DECIMAL: X.X: ±0.1000" X.XX: ±0.0100"
 X.XXX: ±0.0050" X.XXXX: ±0.0001"
 ANGLES: ±0.5° FINISH: 125 MICRO INCHES
 BREAK ALL SHARP EDGES & CORNERS 1/64" MAX

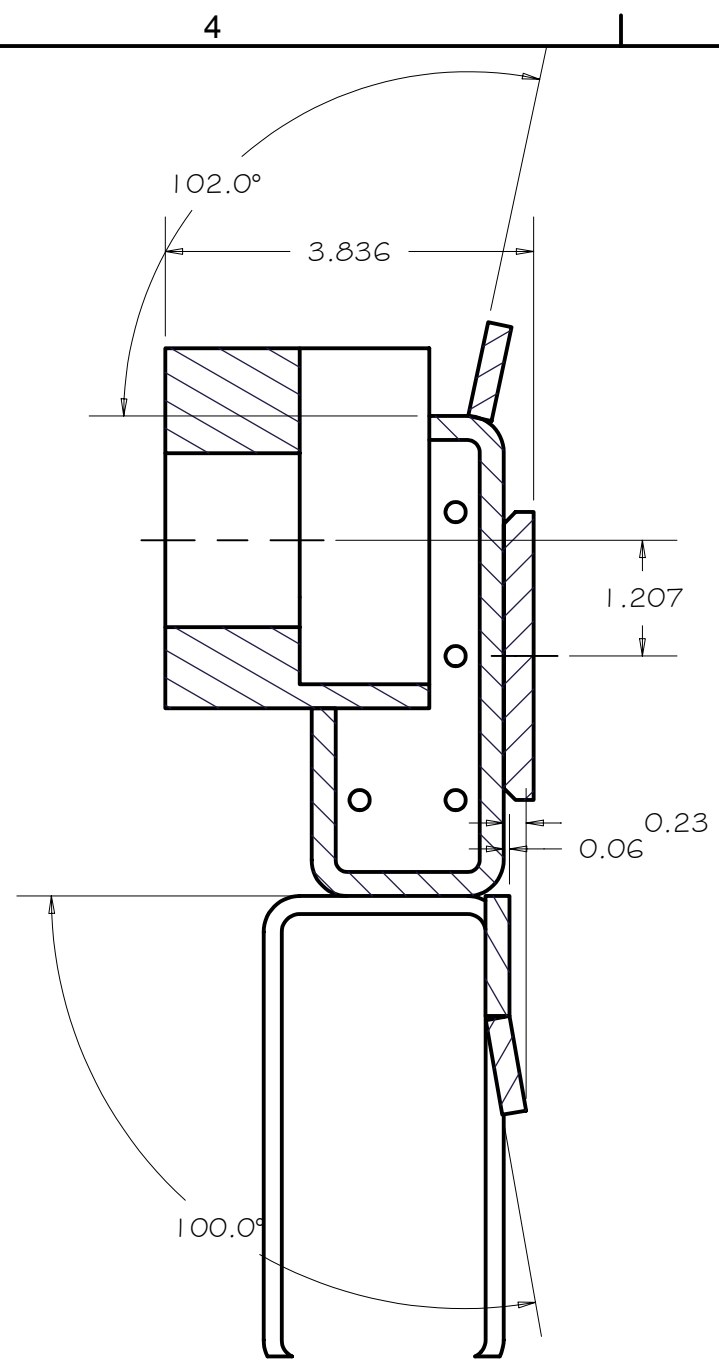


DRAWN: vernon 8/14/2003
 CHECKED: [blank]
 DESIGNED: vernon
 ENGINEER: [blank]

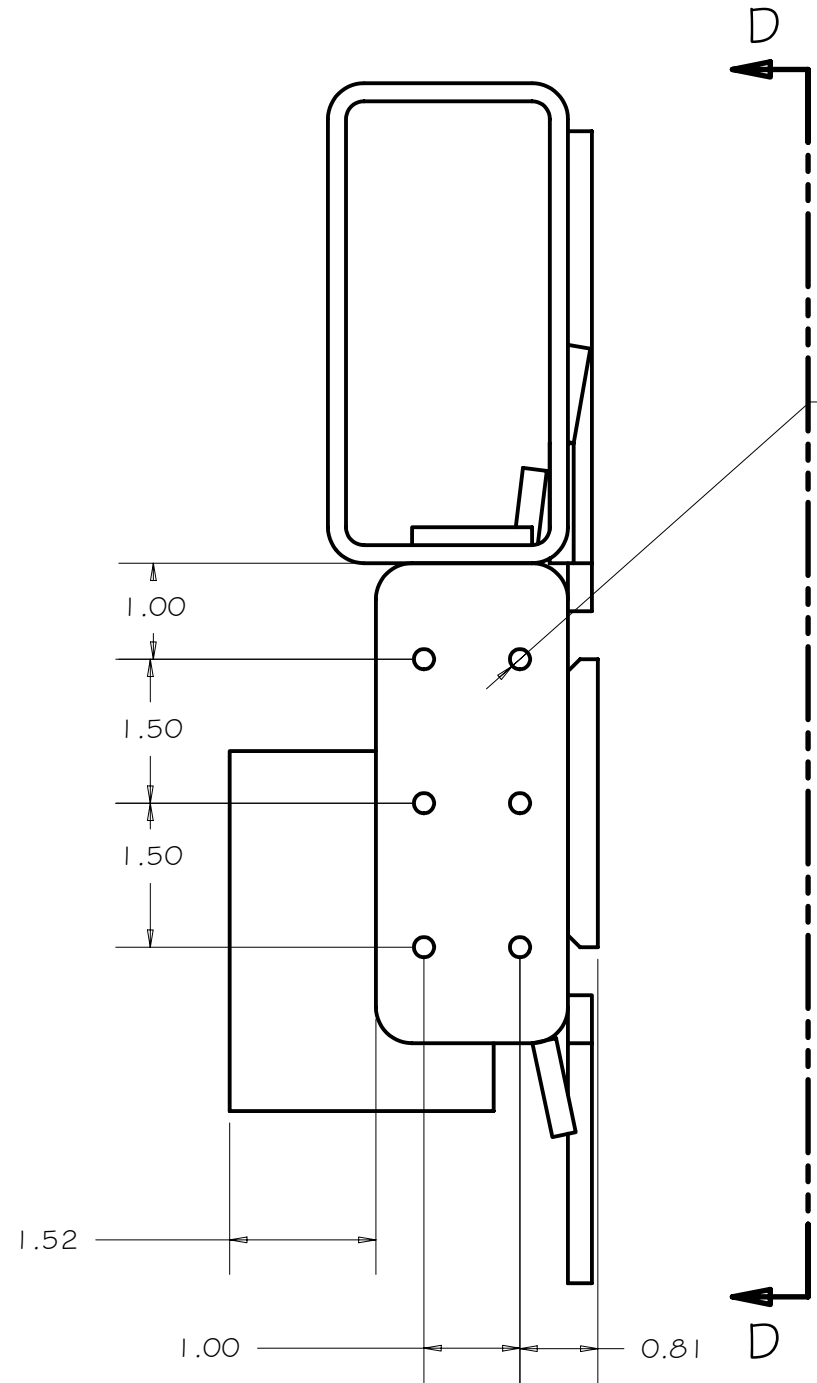
Cassegrain ADC
 TITLE: SUPPORT WELDMENT, RIGHT

MATERIAL	FINISH	PROJECT CODE	DWG NO	REV
		A1100	A1130	H 1/5

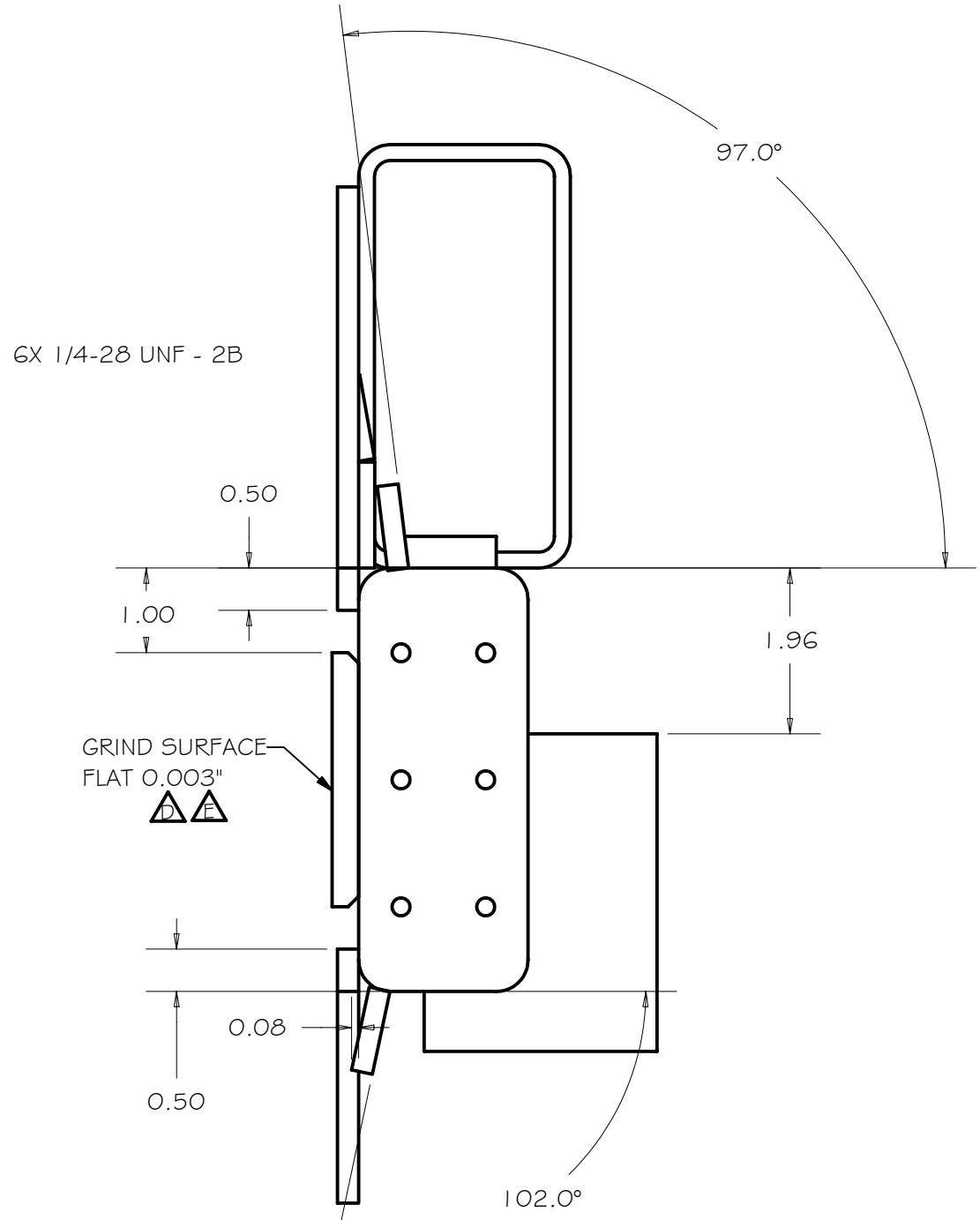
REV	DRWN	CHK'D	DATE	DESCRIPTION
-----	------	-------	------	-------------



SECTION A-A
SCALE 1 / 2



VIEW B-B
SCALE 1 / 2



VIEW C-C
SCALE 1 / 2

TOLERANCES UNLESS OTHERWISE NOTED:
 FRACTIONAL: 0"-6": ±1/64" 6"-24": ±1/32"
 24"+: ±1/16"
 DECIMAL: X.X: ±0.1000" X.XX: ±0.0100"
 X.XXX: ±0.0050" X.XXXX: ±0.0001"
 ANGLES: ±0.5° FINISH: 125 MICRO INCHES
 BREAK ALL SHARP EDGES & CORNERS 1/64" MAX

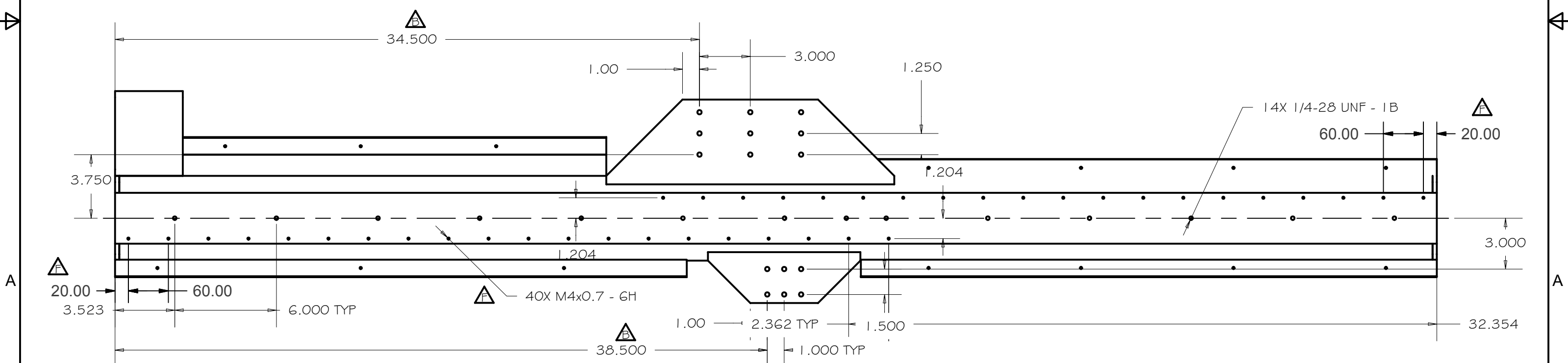
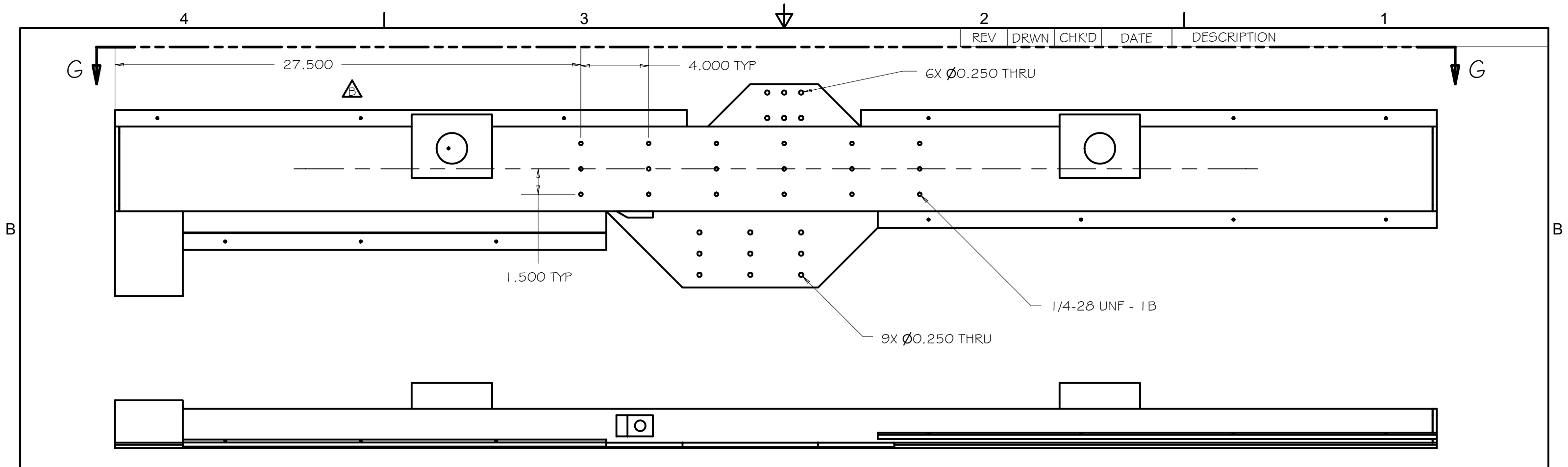


DRAWN: vernon
 CHECKED:
 DESIGNED: vernon
 ENGINEER:

PROJECT CODE		DWG NO	REV
NEXT ASSY: A1100		A1130	H 2/5

Cassegrain ADC

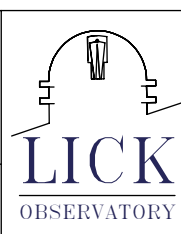
SUPPORT WELDMENT, RIGHT



VIEW D-D
SCALE 0.18 : 1

TOLERANCES UNLESS OTHERWISE NOTED:
 FRACTIONAL: 0"-6": ±1/64" 6"-24": ±1/32"
 24"+: ±1/16"
 DECIMAL: X.X: ±0.1000" X.XX: ±0.0100"
 X.XXX: ±0.0050" X.XXXX: ±0.0001"
 ANGLES: ±0.5° FINISH: 125 MICRO INCHES
 BREAK ALL SHARP EDGES & CORNERS 1/64" MAX

MATERIAL	FINISH
----------	--------



DRAWN	vernon	8/14/2003
CHECKED		
DESIGNED	vernon	
ENGINEER		

Cassegrain ADC	
TITLE	
SUPPORT WELDMENT, RIGHT	
PROJECT CODE	DWG NO
NEXT ASSY	A1130
A1100	
REV	H
3	5

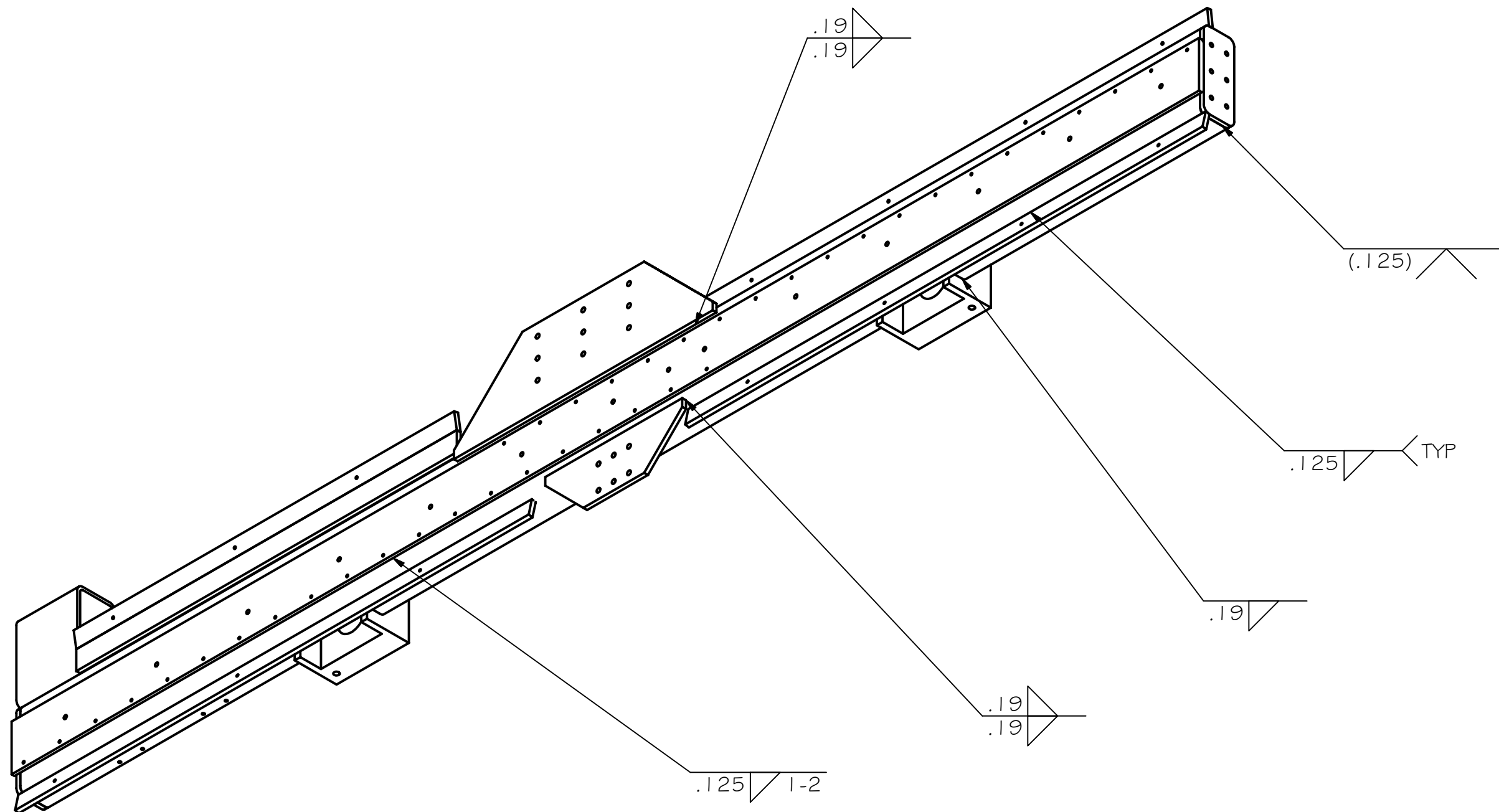
4

3

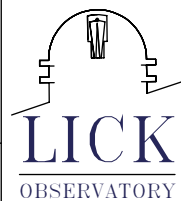
2

1

REV	DRWN	CHK'D	DATE	DESCRIPTION



VIEW F-F
SCALE 0.18 : 1

TOLERANCES UNLESS OTHERWISE NOTED: FRACTIONAL: 0"-6": ±1/64" 6"-24": ±1/32" 24"+: ±1/16" DECIMAL: X.X: ±0.1000" X.XX: ±0.0100" X.XXX: ±0.0050" X.XXXX: ±0.0001" ANGLES: ±0.5° FINISH: 125 MICRO INCHES BREAK ALL SHARP EDGES & CORNERS 1/64" MAX			DRAWN: vernon CHECKED: DESIGNED: vernon ENGINEER:	8/14/2003 	Cassegrain ADC
MATERIAL: FINISH:	TITLE: SUPPORT WELDMENT, RIGHT 		PROJECT CODE: NEXT ASSY: A1100	DWG NO: A1130 	REV: H 4/5

4

3

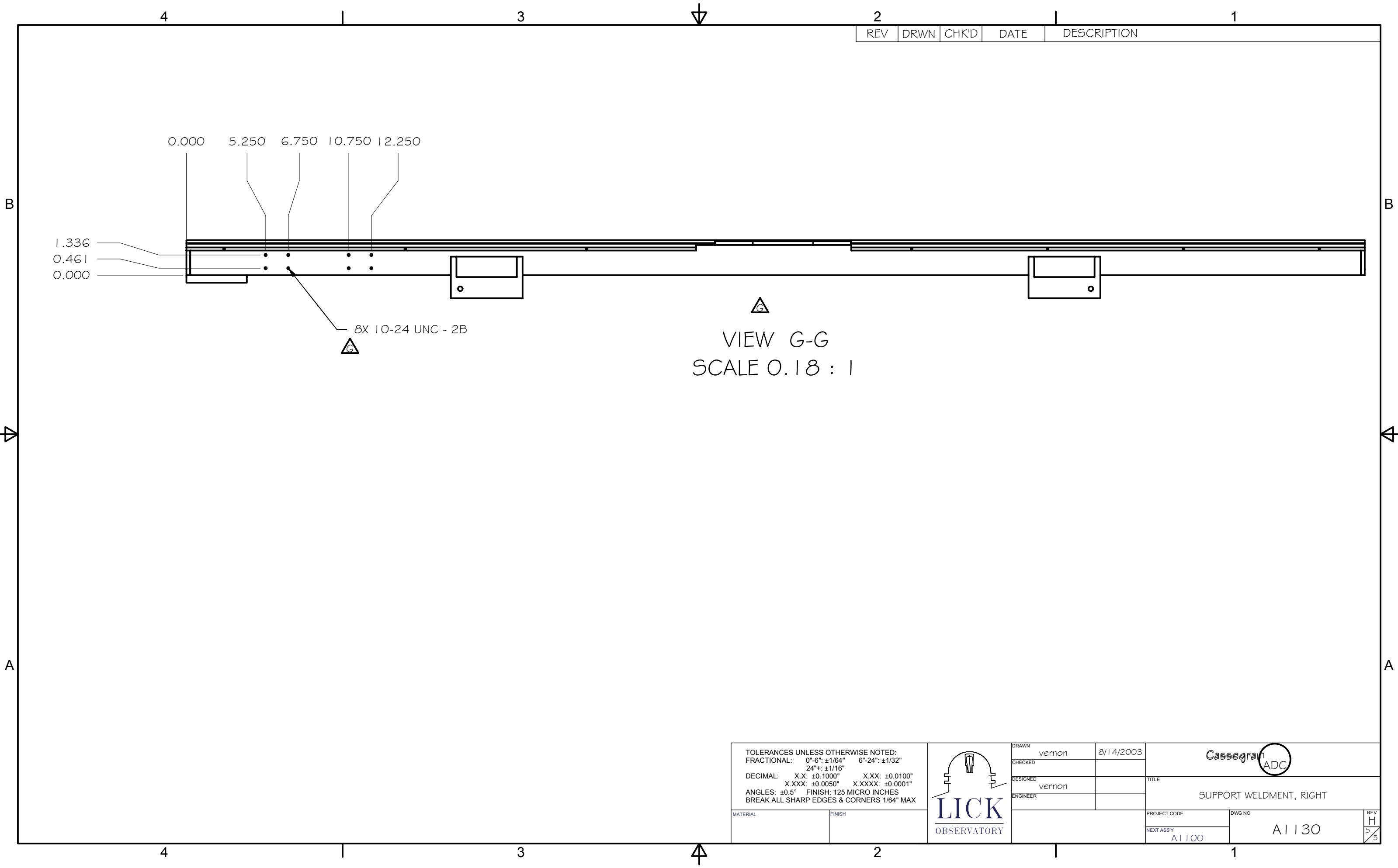
2

1

B

A

REV	DRWN	CHK'D	DATE	DESCRIPTION



VIEW G-G
SCALE 0.18 : 1

TOLERANCES UNLESS OTHERWISE NOTED:
 FRACTIONAL: 0"-6": ±1/64" 6"-24": ±1/32"
 24"+: ±1/16"
 DECIMAL: X.X: ±0.1000" X.XX: ±0.0100"
 X.XXX: ±0.0050" X.XXXX: ±0.0001"
 ANGLES: ±0.5° FINISH: 125 MICRO INCHES
 BREAK ALL SHARP EDGES & CORNERS 1/64" MAX

MATERIAL	FINISH



DRAWN	vernon	8/14/2003
CHECKED		
DESIGNED	vernon	
ENGINEER		

PROJECT CODE		DWG NO	REV
NEXT ASSY		A1130	H
A1100			5

Cassegrain ADC

SUPPORT WELDMENT, RIGHT