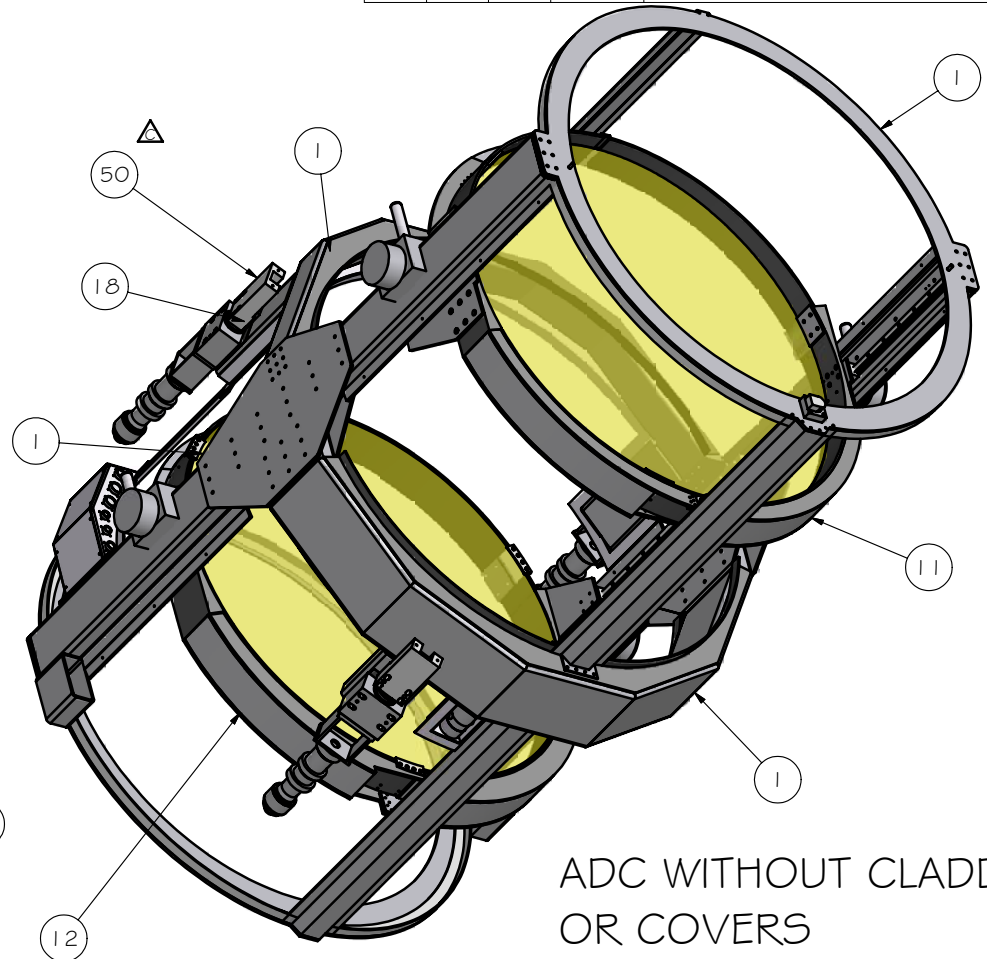
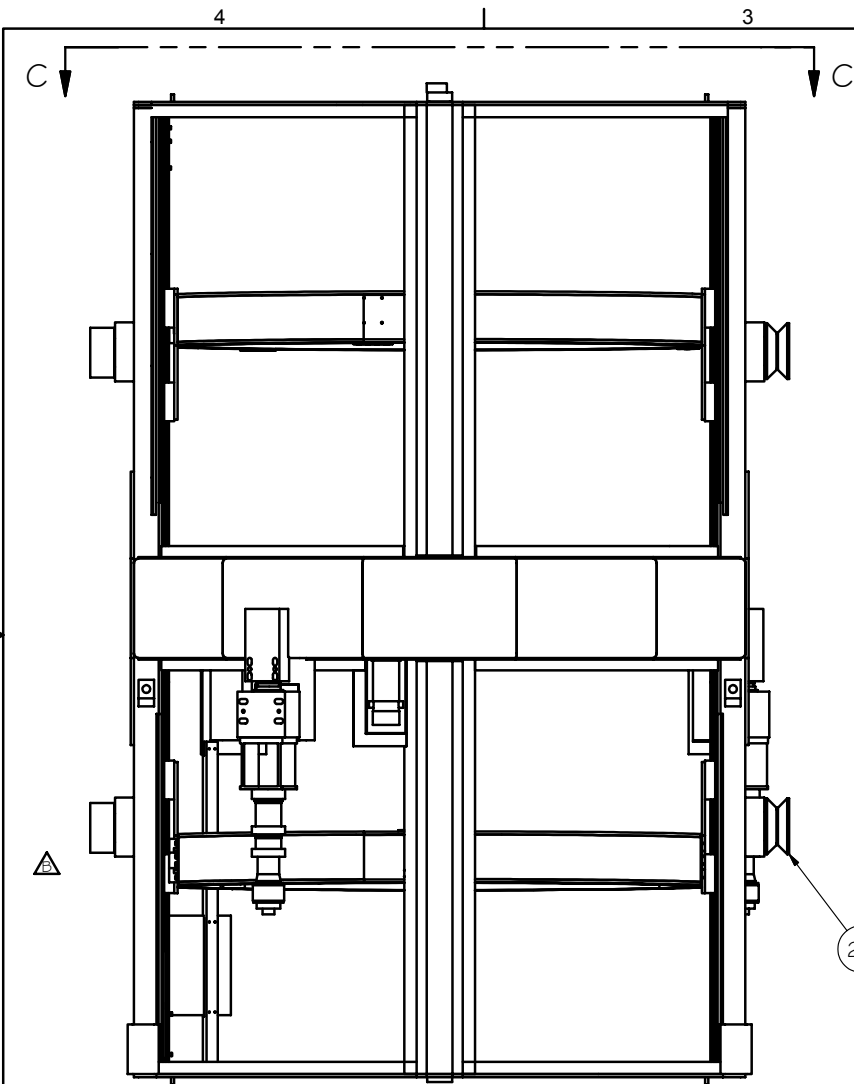
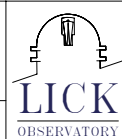


REV	DRWN	CHKD	DATE	DESCRIPTION
B	VRW	VRW	6/21/04	ADD ELECTRONICS PANEL, CHANGE ROLLERS & LENGTH
C	VRW	VRW	9/7/04	ADD TELESCOPE SIDE HARDPOINT
D	VRW	VRW	11/25/05	MODIFY AFT CLADDING FOR ELECTRIC PANEL



ADC WITHOUT CLADDING  
OR COVERS

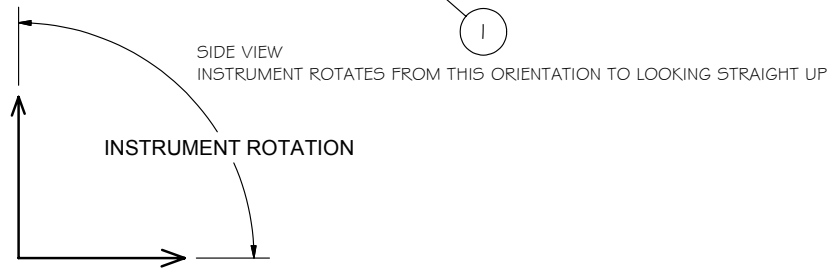
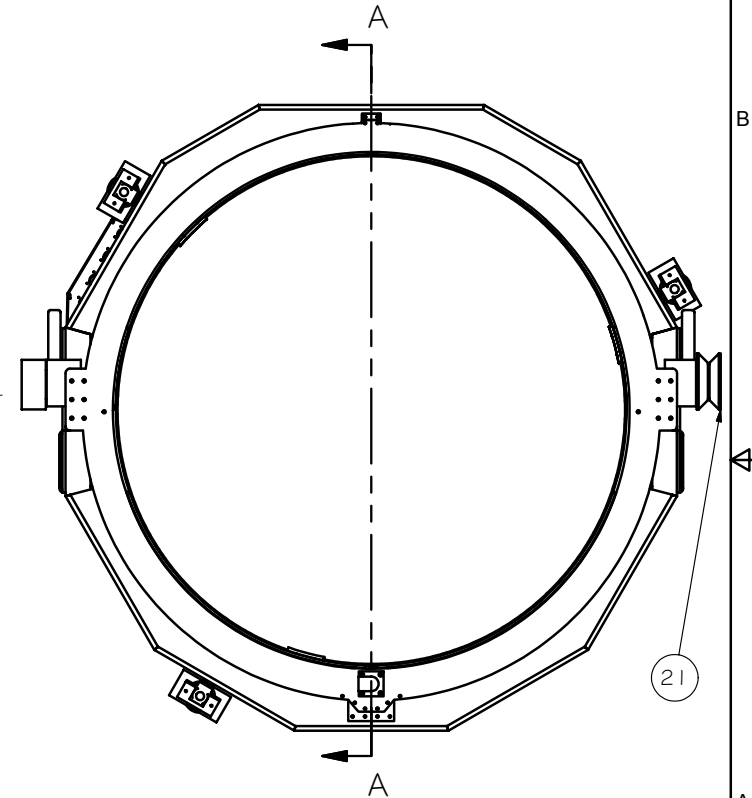
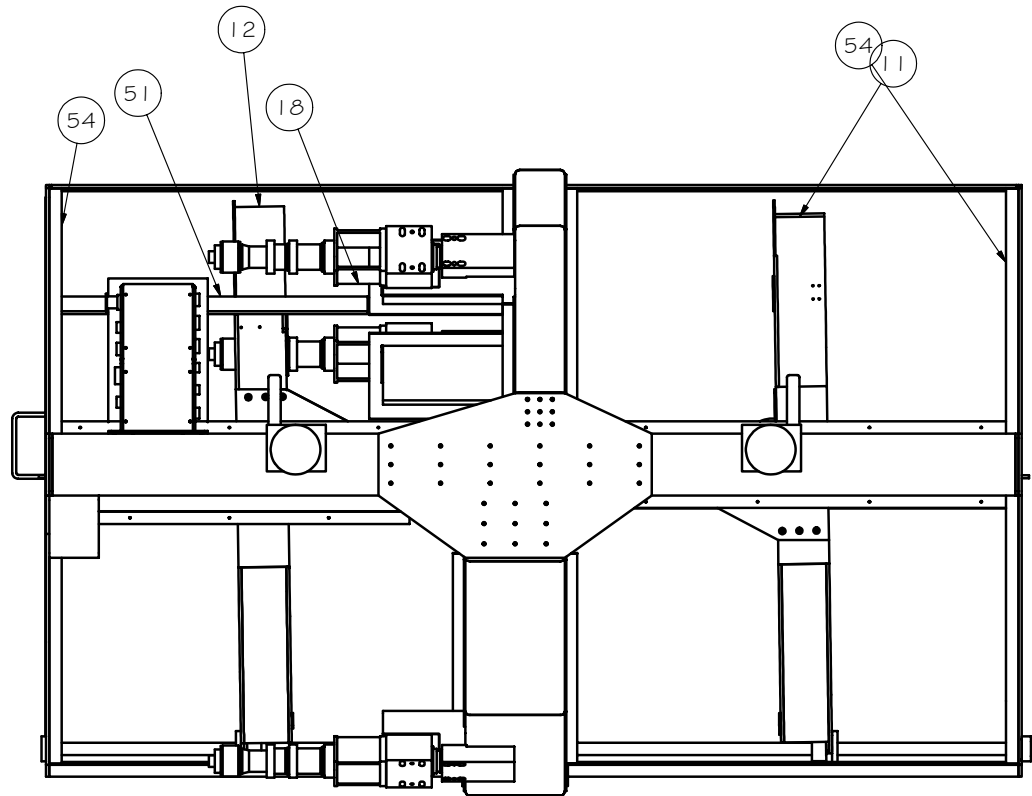
TOLERANCES UNLESS OTHERWISE NOTED:  
 FRACTIONAL: 0"-6": ±1/64" 6"-24": ±1/32"  
 24": ±1/16"  
 DECIMAL: X.X: ±0.1000" X.XX: ±0.0100"  
 X.XXX: ±0.0050" X.XXXX: ±0.0001"  
 ANGLES: ±0.5° FINISH: 125 MICRO INCHES  
 BREAK ALL SHARP EDGES & CORNERS 1/64" MAX



DRAWN	vernon	7/22/2003	
CHECKED			
DESIGNED	vernon		
ENGINEER	vernon		TITLE
			ADC ASSEMBLY
			PROJECT CODE
			DWG NO
			A0001
			NEXT ASSY
			TOP LEVEL

REV D

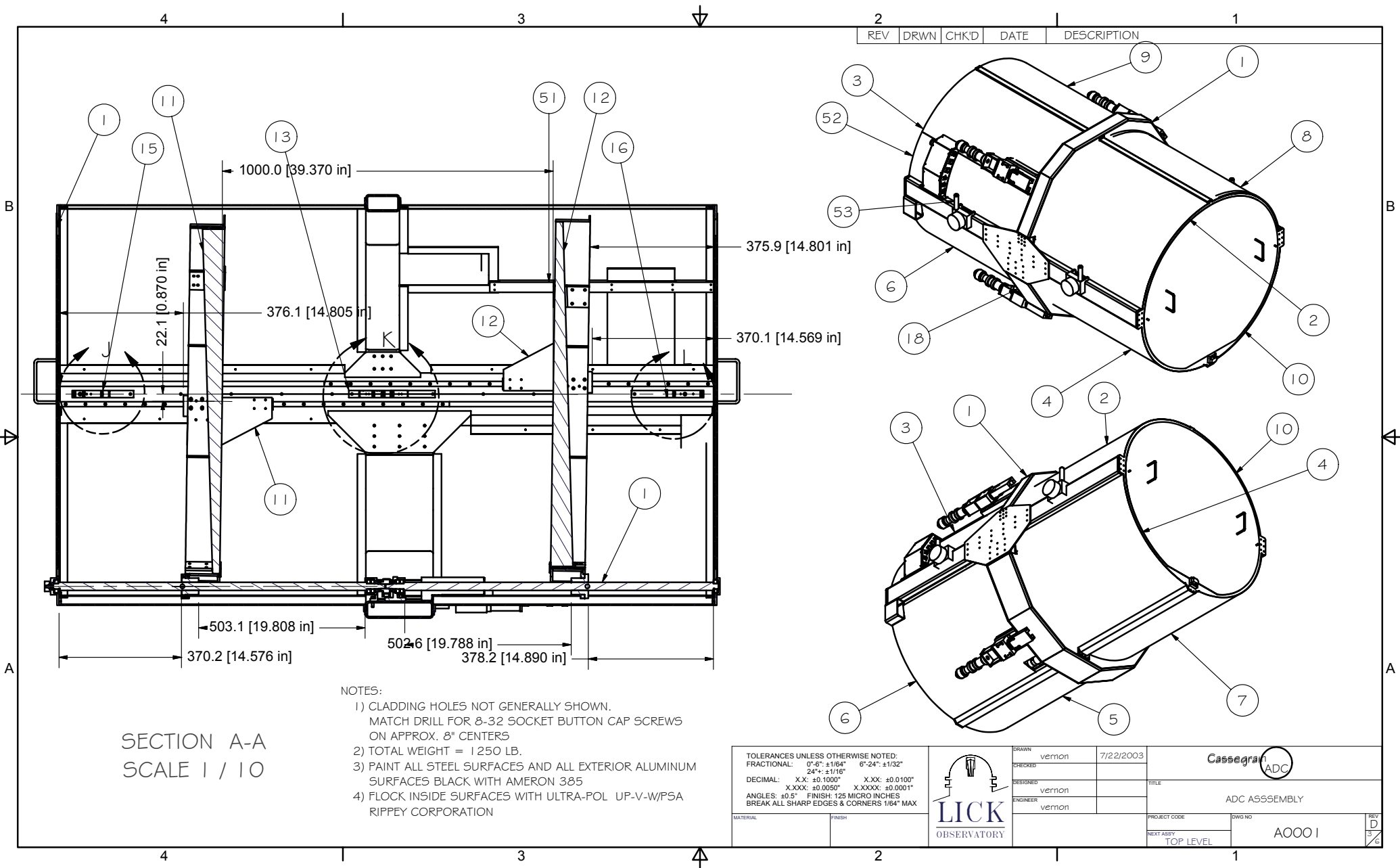
2	1
REV	DESCRIPTION
DRWN	DATE
CHKD	



TOLERANCES UNLESS OTHERWISE NOTED:  
 FRACTIONAL: 0"-6": ±1/64" 6"-24": ±1/32"  
 24": ±1/16"  
 DECIMAL: X.X: ±0.1000" X.XX: ±0.0100"  
 X.XXX: ±0.0050" X.XXXX: ±0.0001"  
 ANGLES: ±0.5° FINISH: 125 MICRO INCHES  
 BREAK ALL SHARP EDGES & CORNERS 1/64" MAX



DRAWN	vernon	7/22/2003	
CHECKED			
DESIGNED	vernon		TITLE
ENGINEER	vernon		ADC ASSEMBLY
MATERIAL			PROJECT CODE
FINISH			DWG NO
			A0001
			NET D
			2
			6



REV	DRWN	CHKD	DATE	DESCRIPTION

- NOTES:
- 1) CLADDING HOLES NOT GENERALLY SHOWN. MATCH DRILL FOR 8-32 SOCKET BUTTON CAP SCREWS ON APPROX. 8" CENTERS
  - 2) TOTAL WEIGHT = 1250 LB.
  - 3) PAINT ALL STEEL SURFACES AND ALL EXTERIOR ALUMINUM SURFACES BLACK WITH AMERON 385
  - 4) FLOCK INSIDE SURFACES WITH ULTRA-POL UP-V-W/PSA RIPPEY CORPORATION

SECTION A-A  
SCALE 1 / 10

TOLERANCES UNLESS OTHERWISE NOTED: FRACTIONAL: 0"-6": ±1/64" 6"-24": ±1/32" 24": ±1/16"		DRAWN: vernon CHECKED: DESIGNED: vernon ENGINEER: vernon	DATE: 7/22/2003 PROJECT CODE: NEXT ASSY: TOP LEVEL	Cassegrain ADC ADC ASSEMBLY DWG NO: A0001	REF D 3/6
MATERIAL:	FINISH:				

4

3


2

1

REV	DRWN	CHKD	DATE	DESCRIPTION
-----	------	------	------	-------------

Parts List

ITEM	QTY	PART NUMBER	DESCRIPTION
1	1	A1000	BASE / DRIVE ASSEMBLY
2	1	A1501	FWD CLADDING UPPER
3	1	A1502	AFT CLADDING UPPER
4	1	A1503	FWD CLADDING LOWER
5	1	A1504	AFT CLADDING LOWER
6	1	A1505	AFT CLADDING LOWER
7	1	A1506	FWD CLADDING LOWER
8	1	A1507	FWD CLADDING UPPER
9	1	A1508	AFT CLADDING UPPER
10	2	A1510	COVER ASSEMBLY, FWD
11	1	A2001	FWD CELL ASSEMBLY
12	1	A2002	AFT CELL ASSEMBLY
13	1	A3015	FIDUCAL ASSEMBLY, RETRACT
15	1	A3017	FIDUCAL ASSEMBLY, FWD DPL
16	1	A3019	FIDUCAL ASSEMBLY, AFT DPL
17	1	A3200	INTERCONNECT PANEL ASSEMBLY
18	3	A4001	HARDPOINT INSTRUMENT SIDE
19	4	nut_1-qtr	
21	2	ROLLER - V	OSBORN VLRE-4 1/2
22	4	washer_1-qtr	
49	2	osborn_PLRE-4	OSBORN PLRE-4
50	3	A4002	HARDPOINT TELESCOPE SIDE
51	1	A1509	AFT CLADDING SUPPORT
52	1	A1545	AFT CLADDING UPPER
53	1	A1546	AFT CLADDING UPPER
54	2	A1547	ADC CLADDING HOOP

TOLERANCES UNLESS OTHERWISE NOTED: FRACTIONAL: 0"-6": ±1/64" 6"-24": ±1/32" 24": ±1/16"			DRAWN: vernon CHECKED: 7/22/2003	Cassegrain ADC
DECIMAL: X.X: ±0.1000" X.XX: ±0.0100" X.XXX: ±0.0050" X.XXXX: ±0.0001" ANGLES: ±0.5° FINISH: 125 MICRO INCHES BREAK ALL SHARP EDGES & CORNERS 1/64" MAX			DESIGNED: vernon ENGINEER: vernon	TITLE: ADC ASSEMBLY
MATERIAL:	FINISH:		PROJECT CODE:	DWG NO: A0001
			NEXT ASSY: TOP LEVEL	NET D 4/6

4

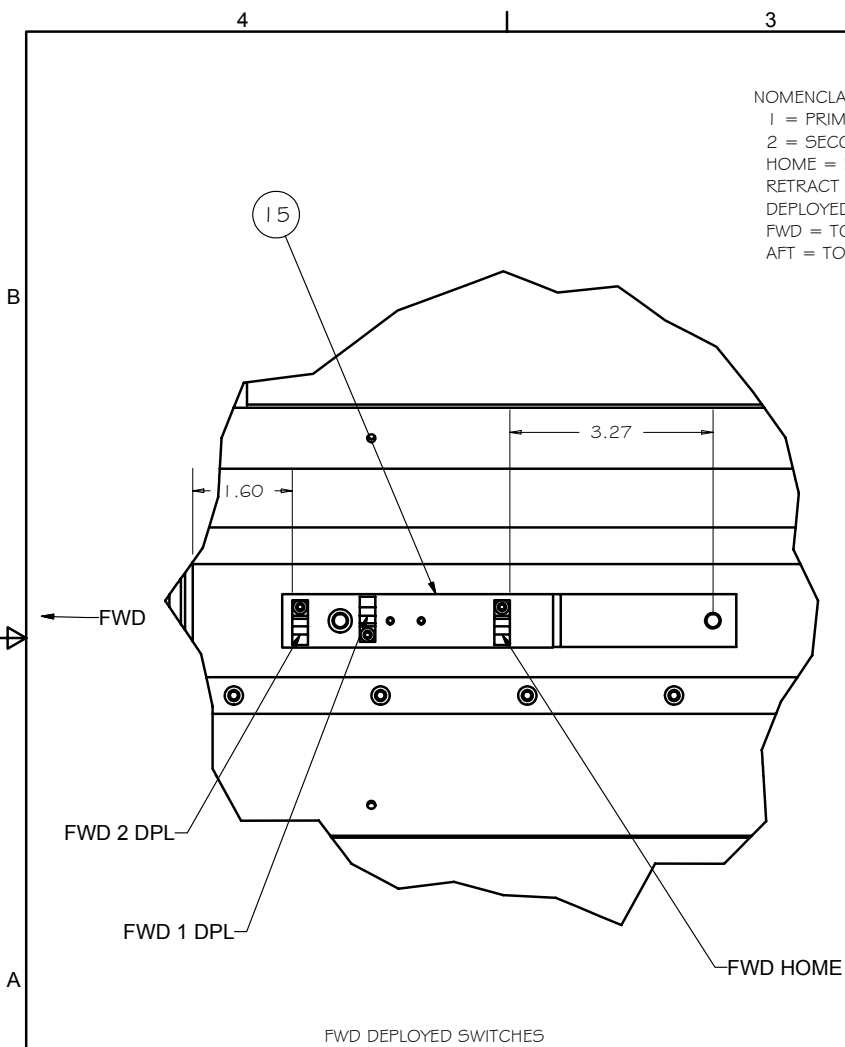
3

2

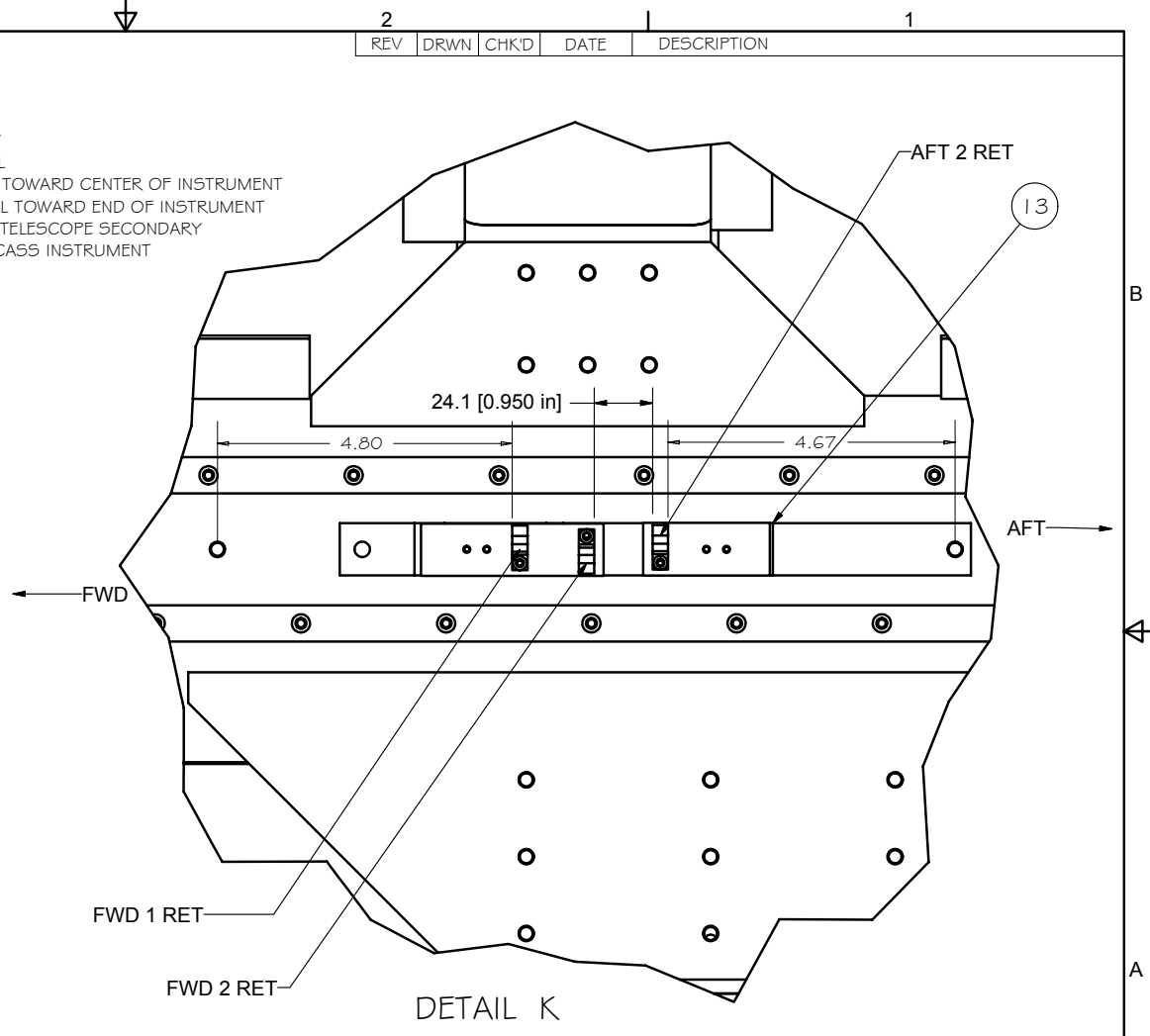
1

REV	DRWN	CHKD	DATE	DESCRIPTION
2				


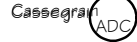
NOMENCLATURE:  
 1 = PRIMARY  
 2 = SECONDARY  
 HOME = FIDUCIAL  
 RETRACT = CELL TOWARD CENTER OF INSTRUMENT  
 DEPLOYED = CELL TOWARD END OF INSTRUMENT  
 FWD = TOWARD TELESCOPE SECONDARY  
 AFT = TOWARD CASS INSTRUMENT



DETAIL J  
SCALE 1 / 2



DETAIL K  
SCALE 1 / 2  
RETRACTED SWITCHES

TOLERANCES UNLESS OTHERWISE NOTED: FRACTIONAL: 0"-6": ±1/64" 6"-24": ±1/32" 24": ±1/16" DECIMAL: X.X: ±0.1000" X.XX: ±0.0100" X.XXX: ±0.0050" X.XXXX: ±0.0001" ANGLES: ±0.5° FINISH: 125 MICRO INCHES BREAK ALL SHARP EDGES & CORNERS 1/64" MAX			DRAWN vernon	7/22/2003	
MATERIAL	FINISH		CHECKED		
			DESIGNED vernon		PROJECT CODE
			ENGINEER vernon		DWG NO A0001
					NEXT ASSY TOP LEVEL

REV  
D  
E  
G

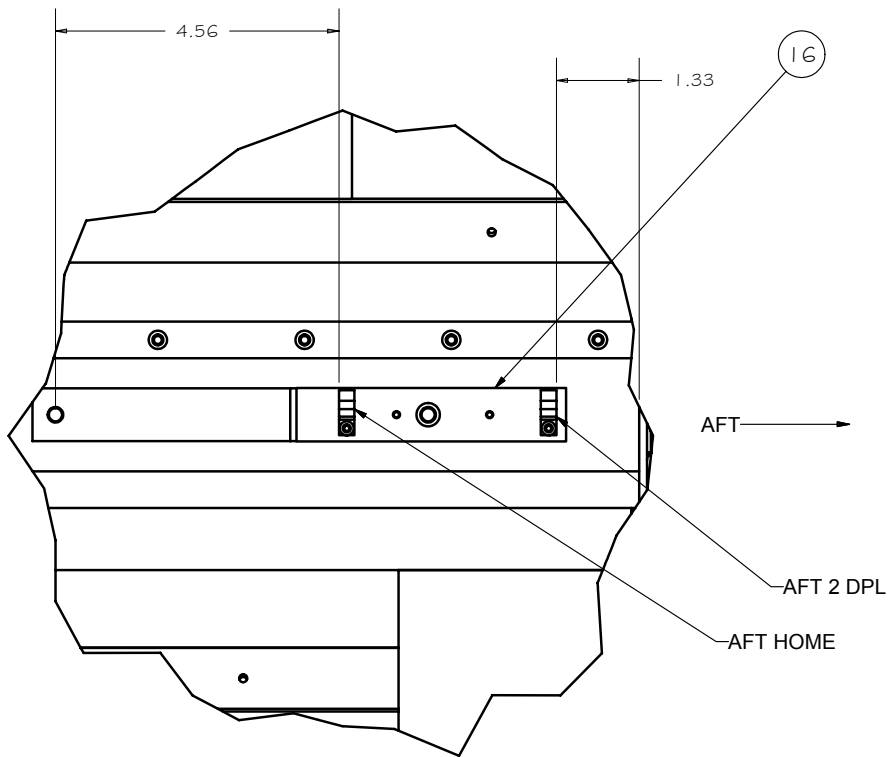
4

3

2

1

REV	DRWN	CHKD	DATE	DESCRIPTION



NOMENCLATURE:

- 1 = PRIMARY
- 2 = SECONDARY
- HOME = FIDUCAL
- RETRACT = CELL TOWARD CENTER OF INSTRUMENT
- DEPLOYED = CELL TOWARD END OF INSTRUMENT
- FWD = TOWARD TELESCOPE SECONDARY
- AFT = TOWARD CASS INSTRUMENT

AFT →

AFT 2 DPL

AFT HOME

AFT DEPLOYED LIMIT SWITCHES

DETAIL L  
SCALE 1 / 2

TOLERANCES UNLESS OTHERWISE NOTED:  
 FRACTIONAL: 0"-6": ±1/64" 6"-24": ±1/32"  
 24": ±1/16"  
 DECIMAL: X.X: ±0.1000" X.XX: ±0.0100"  
 X.XXX: ±0.0050" X.XXXX: ±0.0001"  
 ANGLES: ±0.5° FINISH: 125 MICRO INCHES  
 BREAK ALL SHARP EDGES & CORNERS 1/64" MAX



DRAWN	vernon	7/22/2003	
CHECKED			
DESIGNED	vernon		TITLE
ENGINEER	vernon		ADC ASSEMBLY
MATERIAL			PROJECT CODE
FINISH			DWG NO
			NEXT ASSY
			TOP LEVEL
			A0001

NET  
D  
C  
E

4

3

2

1