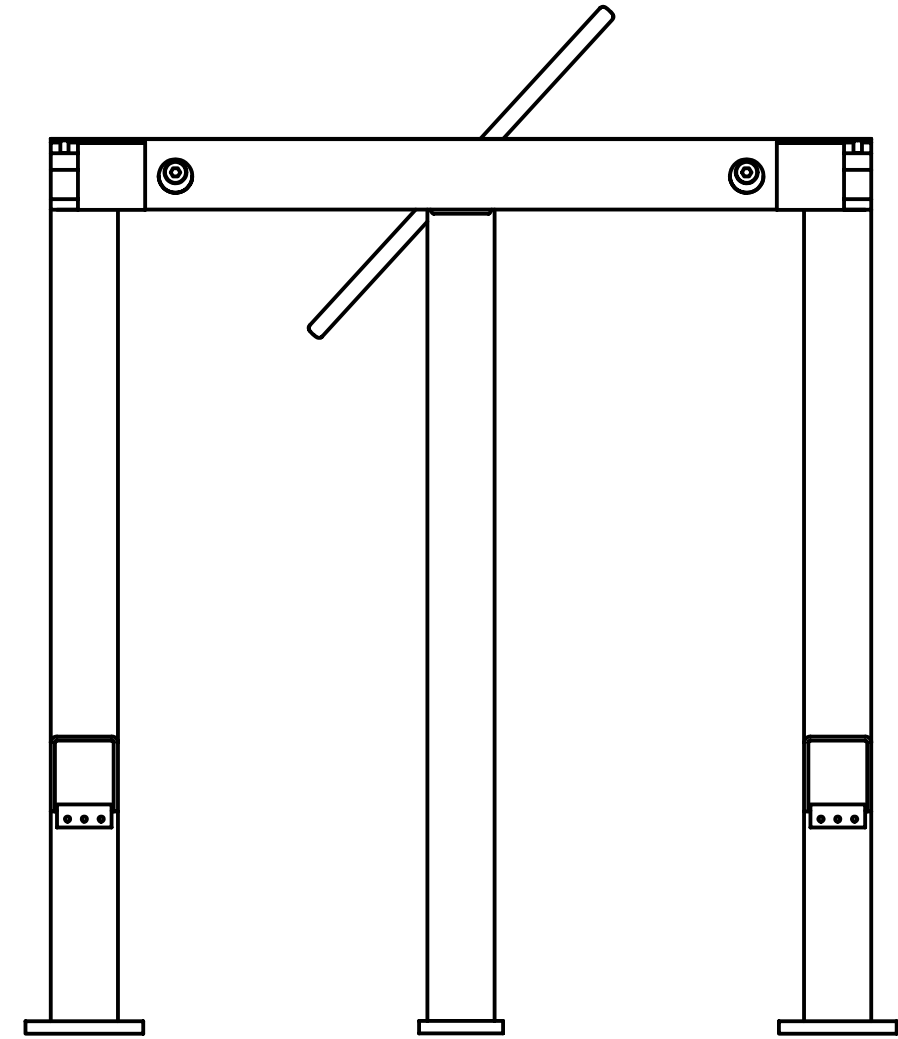
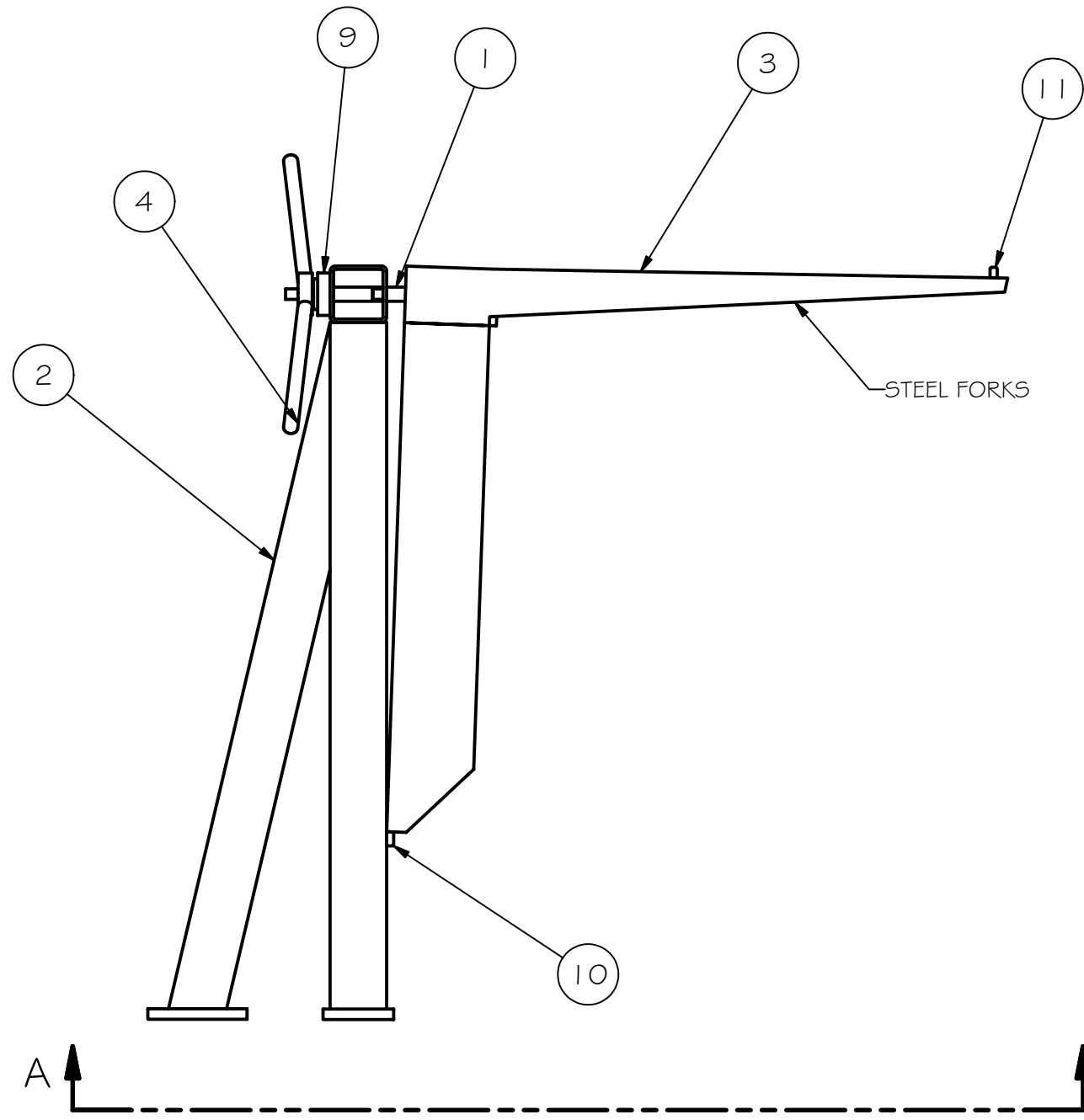
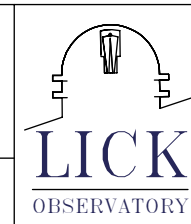


REV	DRWN	CHK'D	DATE	DESCRIPTION
2				
1				



TOLERANCES UNLESS OTHERWISE NOTED:
 FRACTIONAL: 0"-6": ±1/64" 6"-24": ±1/32"
 24"+: ±1/16"
 DECIMAL: X.X: ±0.1000" X.XX: ±0.0100"
 X.XXX: ±0.0050" X.XXXX: ±0.0001"
 ANGLES: ±0.5° FINISH: 125 MICRO INCHES
 BREAK ALL SHARP EDGES & CORNERS 1/64" MAX

MATERIAL	FINISH

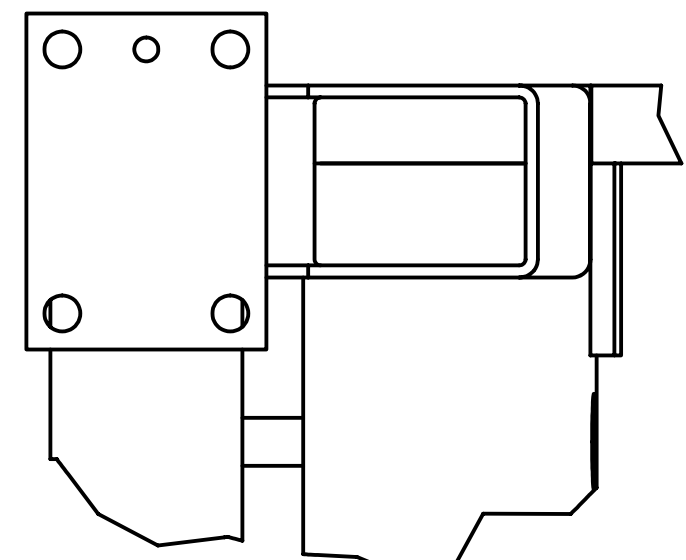
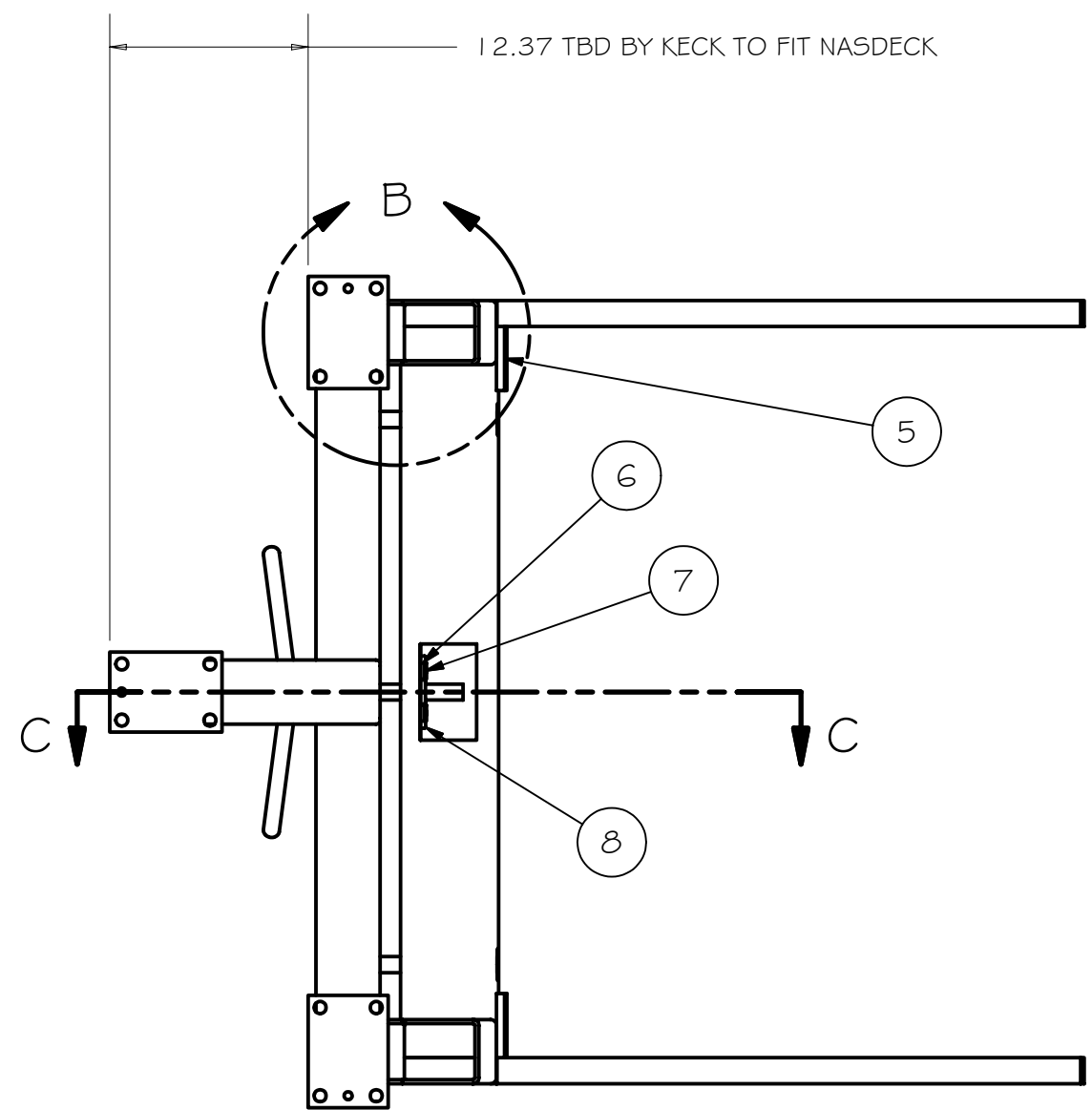


DRAWN	vernon	8/27/2003
CHECKED		
DESIGNED	vernon	
ENGINEER	vernon	

QTY: 1

Cassegrain ADC	
TITLE JACK STAND	
PROJECT CODE A0003	DWG NO A5001
REV A	1/3

REV	DRWN	CHK'D	DATE	DESCRIPTION



Parts List			
ITEM	QTY	PART NUMBER	DESCRIPTION
1	2	----	1" X 1 1/2" SHOULDER BOLT
2	1	A5010	BASE WELDMENT
3	1	A5020	PIVOT WELDMENT
4	1	A5030	ACME SCREW ASSEMBLY
5	2	A5041	BUMPER
6	2	A5043	PIVOT MOUNT
7	2	A5044	PIVOT CLAMP
8	1	A5045	ACME PIVOT
9	1	A5046	BEARING MOUNT
10	2	A5047	HINGE
11	2	DOWEL PIN	1/2" X 1.5" DOWEL PIN

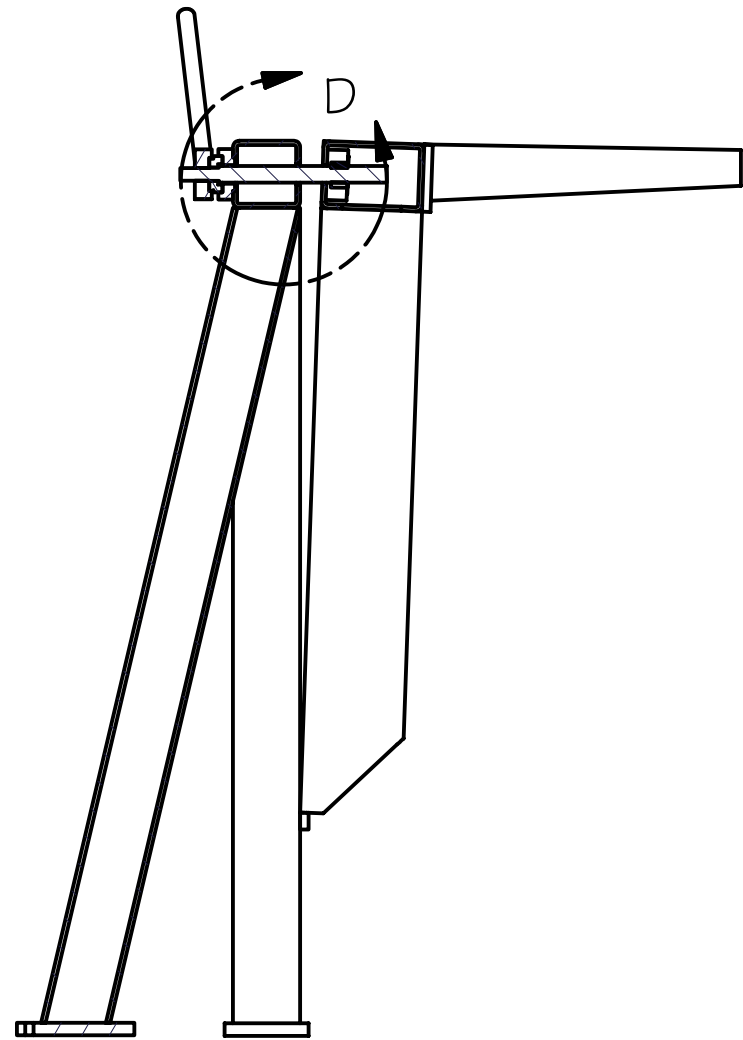
TOLERANCES UNLESS OTHERWISE NOTED:
 FRACTIONAL: 0"-6": ±1/64" 6"-24": ±1/32"
 24"+: ±1/16"
 DECIMAL: X.X: ±0.1000" X.XX: ±0.0100"
 X.XXX: ±0.0050" X.XXXX: ±0.0001"
 ANGLES: ±0.5° FINISH: 125 MICRO INCHES
 BREAK ALL SHARP EDGES & CORNERS 1/64" MAX



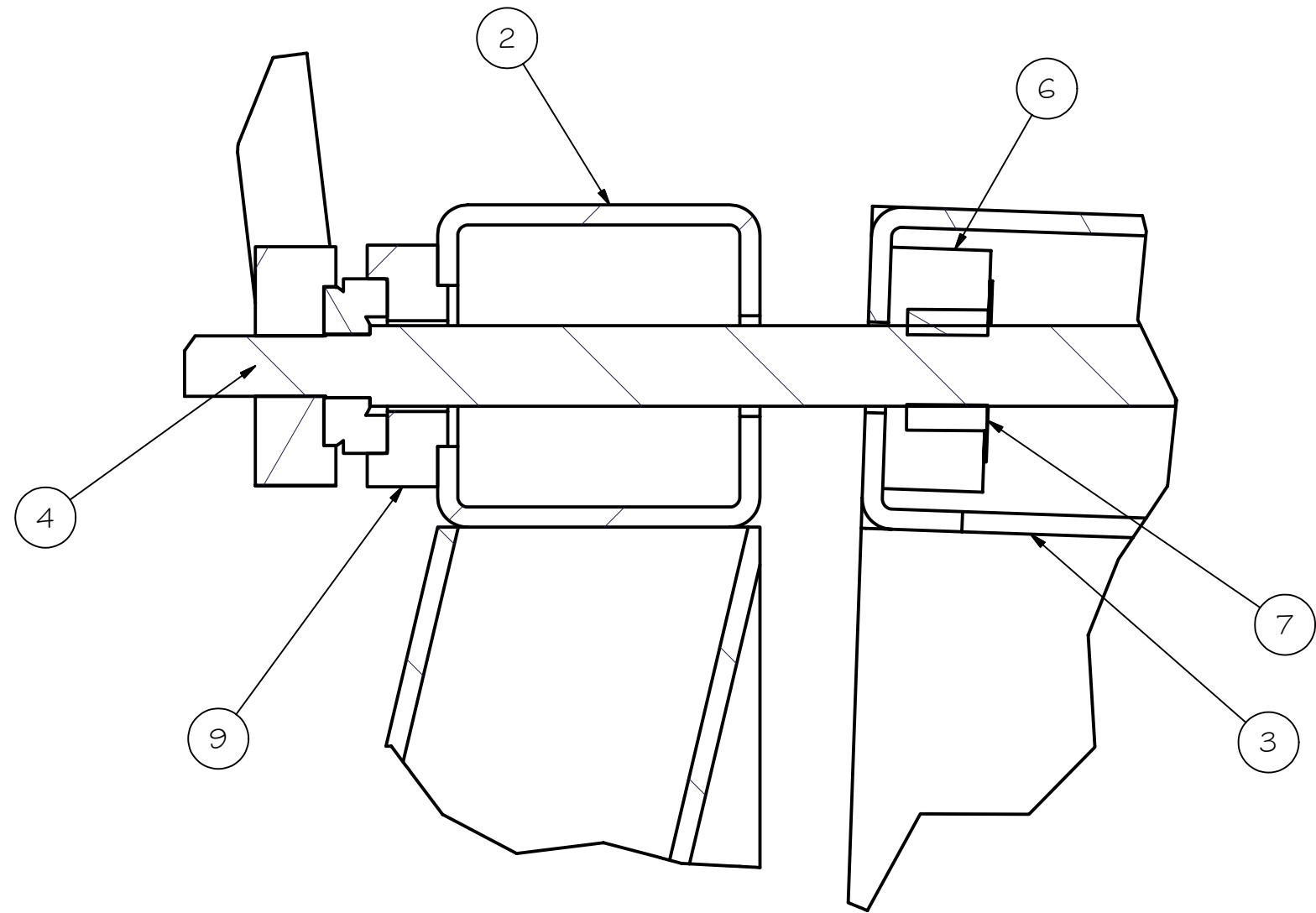
DRAWN: vernon 8/27/2003
 CHECKED:
 DESIGNED: vernon
 ENGINEER: vernon

Cassegrain ADC
 TITLE: JACK STAND
 PROJECT CODE: A0003
 DWG NO: A5001
 REV: A
 2/3

REV	DRWN	CHK'D	DATE	DESCRIPTION



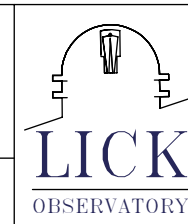
SECTION C-C
SCALE 0.09 : 1



DETAIL D
SCALE 1 / 2

TOLERANCES UNLESS OTHERWISE NOTED:
 FRACTIONAL: 0"-6": ±1/64" 6"-24": ±1/32"
 24"+: ±1/16"
 DECIMAL: X.X: ±0.1000" X.XX: ±0.0100"
 X.XXX: ±0.0050" X.XXXX: ±0.0001"
 ANGLES: ±0.5° FINISH: 125 MICRO INCHES
 BREAK ALL SHARP EDGES & CORNERS 1/64" MAX

MATERIAL	FINISH



DRAWN	vernon	8/27/2003
CHECKED		
DESIGNED	vernon	
ENGINEER	vernon	

QTY: 1

Cassegrain ADC	
TITLE JACK STAND	
PROJECT CODE A0003	DWG NO A5001
REV A	3/3