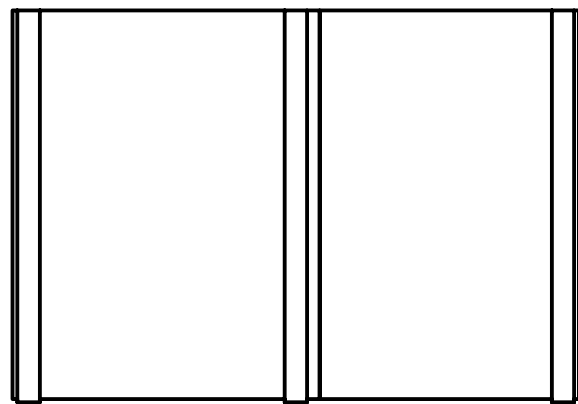
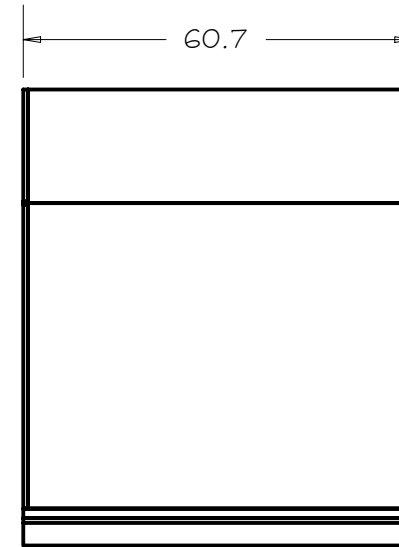
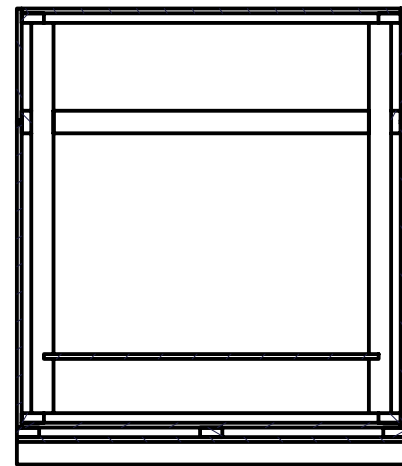
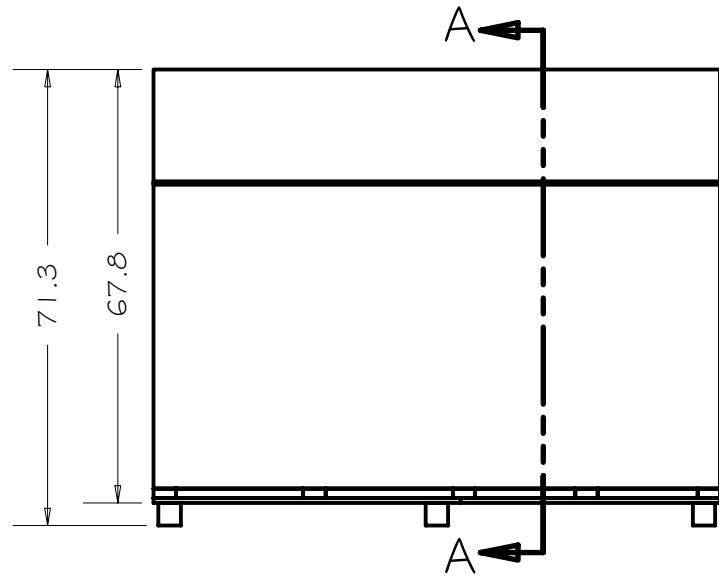
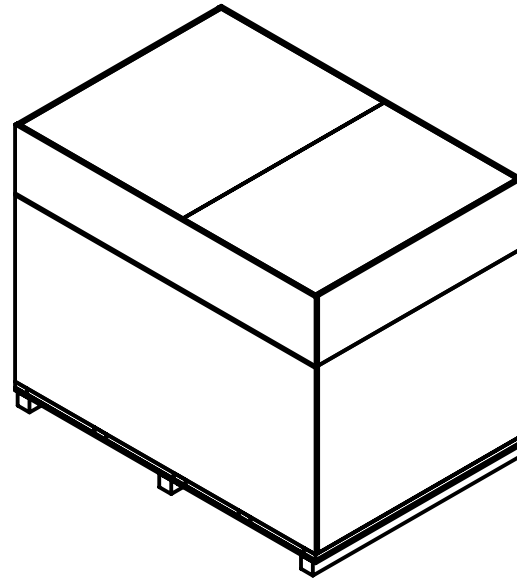
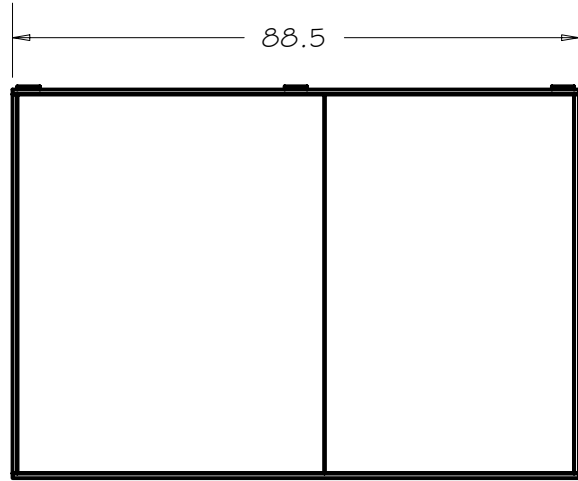


REV	DRWN	CHK'D	DATE	DESCRIPTION
A	GFC	JL	02SEP05	INITIAL RELEASE
B	GFC	--	15AUG06	CHANGED TO SHIPPING CRATE ONLY



Parts List			
ITEM	QTY	P/N	DESCRIPTION
1	1	MAT'L	PLYWOOD PANEL, 3/4 X 47 X 52.24
2	1	MAT'L	PLYWOOD PANEL, 3/4 X 52.27 X 33
3	2	MAT'L	PLYWOOD PANEL, 3/4 X 48 X 59.24
4	2	MAT'L	PLYWOOD PANEL, 3/4 X 39 X 59.24
5	4	MAT'L	STUD, 2 X 4 X 87
6	5	MAT'L	STUD, 2 X 4 X 52.24
7	10	MAT'L	STUD, 2 X 4 X 61
8	2	MAT'L	PLYWOOD PANEL, 3/4 X 47-3/4 X 59-1/4
9	2	MAT'L	PLYWOOD PANEL, 3/4 X 48 X 88-1/2
10	2	MAT'L	STUD, 2 X 4 X 49.24
11	4	MAT'L	STUD, 2 X 4 X 38.25
12	5	MAT'L	STUD, 2 X 4 X 60.75
13	6	MAT'L	STUD, 2 X 4 X 15-5/8
14	6	MAT'L	STUD, 2 X 4 X 19-7/8
15	2	MAT'L	PLYWOOD PANEL, 3/4 X 18 X 88.5
16	2	MAT'L	PLYWOOD PANEL, 3/4 X 17-3/4 X 59-1/4
17	1	MAT'L	PLYWOOD PANEL, 3/4 X 48 X 60-3/4
18	1	MAT'L	PLYWOOD PANEL, 3/4 X 40-1/2 X 60-3/4
19	3	MAT'L	4x4, 61-1/4" LONG

NOTES

1 APPROXIMATE WEIGHT, 1045 LBS

TOLERANCES UNLESS OTHERWISE NOTED:
 FRACTIONAL: 0"-6": ±1/64" 6"-24": ±1/32"
 24"+: ±1/16"
 DECIMAL: X.X: ±0.1000" X.XX: ±0.0100"
 X.XXX: ±0.0050" X.XXXX: ±0.0001"
 ANGLES: ±0.5° FINISH: 125 MICRO INCHES
 BREAK ALL SHARP EDGES & CORNERS 1/64" MAX

MATERIAL	FINISH
PARTS LIST	



DRAWN	CABAK	9/2/2005
CHECKED	LEWIS	
DESIGNED	CABAK	
ENGINEER	CABAK	

Cassegrain ADC	
TITLE	
SHIPPING CRATE	

PROJECT CODE	KKADIN	DWG NO	A820G	REV	B
NEXT ASSY	NA				1/3