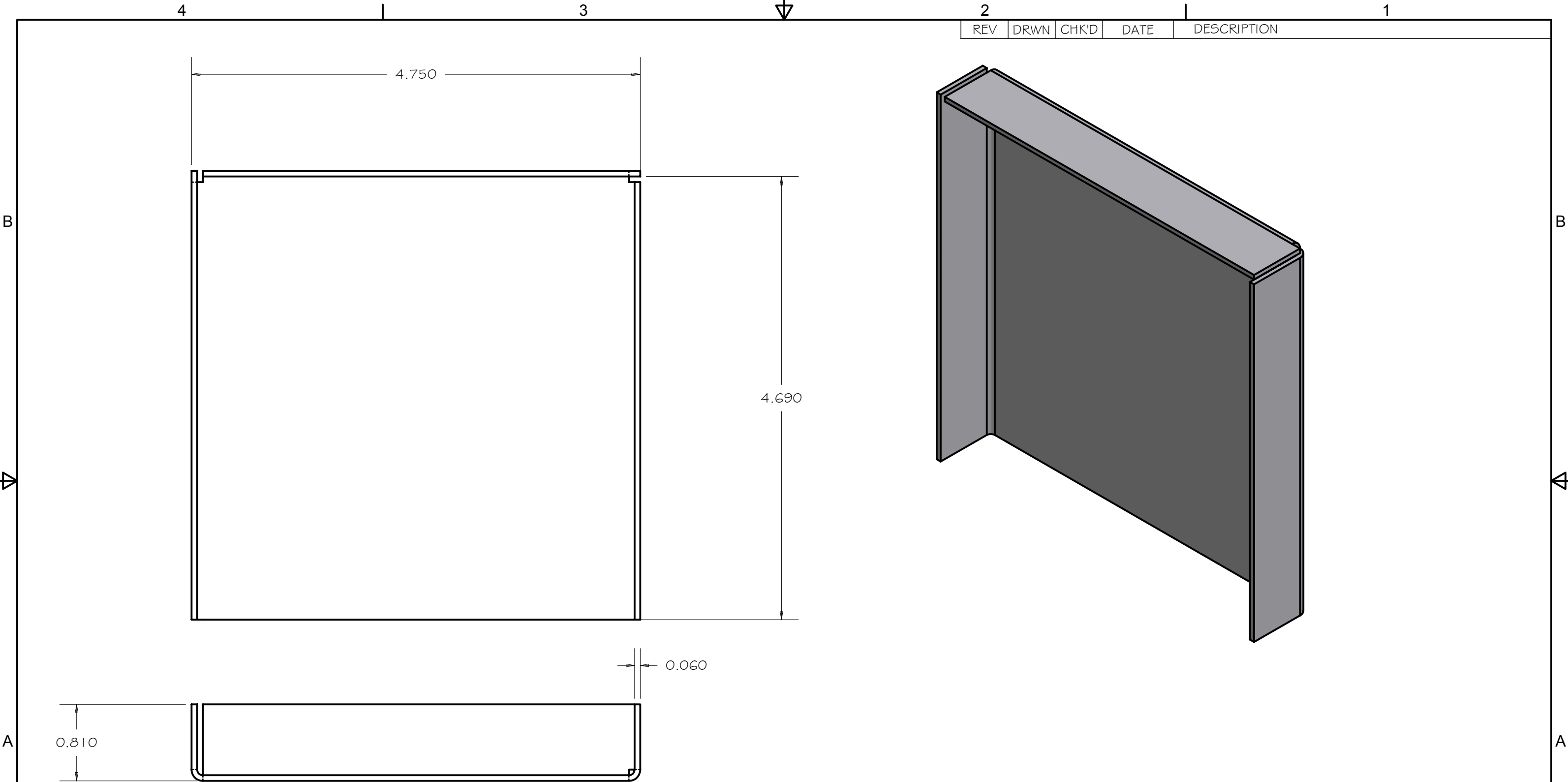


REV	DRWN	CHK'D	DATE	DESCRIPTION
-----	------	-------	------	-------------

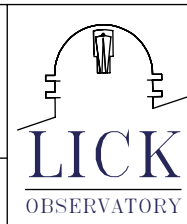


SCALE 1 : 1

TOLERANCES UNLESS OTHERWISE NOTED:
 FRACTIONAL: 0"-6": ±1/64" 6"-24": ±1/32"
 24"+: ±1/16"
 DECIMAL: X.X: ±0.1000" X.XX: ±0.0100"
 X.XXX: ±0.0050" X.XXXX: ±0.0001"
 ANGLES: ±0.5° FINISH: 125 MICRO INCHES
 BREAK ALL SHARP EDGES & CORNERS 1/64" MAX

MATERIAL
16 GA 304 SS

FINISH



DRAWN: vernon
 CHECKED:
 DESIGNED: vernon
 ENGINEER: VRW

QTY: 1

7/20/2005		Sol-Gel Facility	
TITLE		HARDENING TANK DRAWER	
PROJECT CODE	DWG NO	REV	
SG3515	SG3516	A	
NEXT ASSY		1/2	

4

3

2

1

REV	DRWN	CHK'D	DATE	DESCRIPTION
-----	------	-------	------	-------------

5.456

4.698

0.000

0.000

0.758

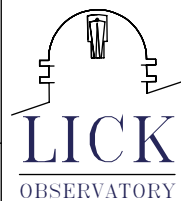
5.404

6.161

SCALE 1 : 1

TOLERANCES UNLESS OTHERWISE NOTED:
 FRACTIONAL: 0"-6": ±1/64" 6"-24": ±1/32"
 24"+: ±1/16"
 DECIMAL: X.X: ±0.1000" X.XX: ±0.0100"
 X.XXX: ±0.0050" X.XXXX: ±0.0001"
 ANGLES: ±0.5° FINISH: 125 MICRO INCHES
 BREAK ALL SHARP EDGES & CORNERS 1/64" MAX

MATERIAL	FINISH
----------	--------



DRAWN	vernon	7/20/2005	Sol-Gel Facility	
CHECKED				
DESIGNED	vernon		TITLE	
ENGINEER	VRW		HARDENING TANK DRAWER	
QTY:		PROJECT CODE	DWG NO	REV
		SG3515	SG3516	A
		NEXT ASSY		2/2

4

3

2

1

B

B

A

A