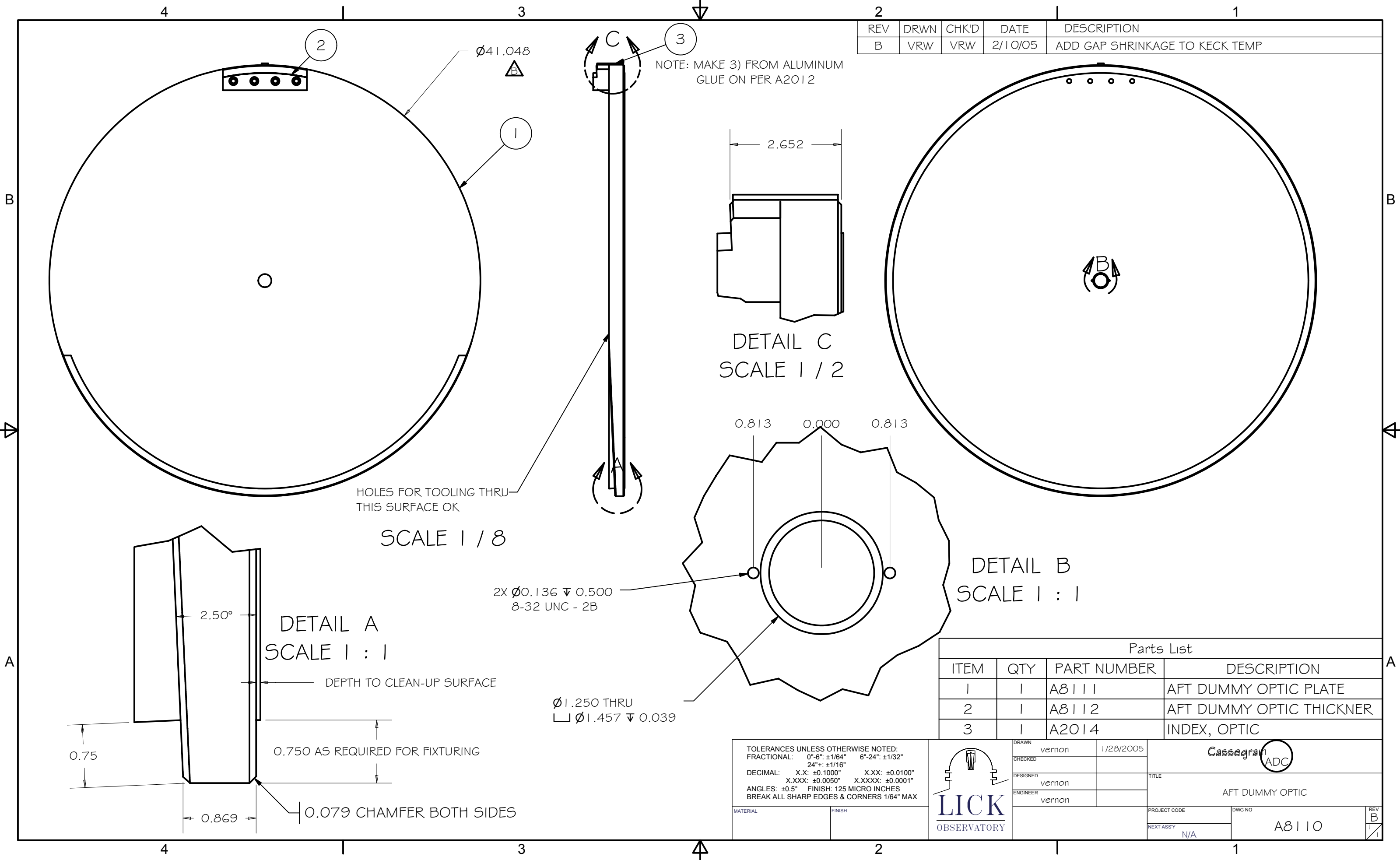


REV	DRWN	CHK'D	DATE	DESCRIPTION
B	VRW	VRW	2/10/05	ADD GAP SHRINKAGE TO KECK TEMP



HOLES FOR TOOLING THRU THIS SURFACE OK

SCALE 1 / 8

DETAIL C
SCALE 1 / 2

DETAIL B
SCALE 1 : 1

DETAIL A
SCALE 1 : 1

Parts List			
ITEM	QTY	PART NUMBER	DESCRIPTION
1	1	A8111	AFT DUMMY OPTIC PLATE
2	1	A8112	AFT DUMMY OPTIC THICKNER
3	1	A2014	INDEX, OPTIC

TOLERANCES UNLESS OTHERWISE NOTED:
 FRACTIONAL: 0"-6": $\pm 1/64$ " 6"-24": $\pm 1/32$ "
 24"+: $\pm 1/16$ "
 DECIMAL: X.X: ± 0.1000 " X.XX: ± 0.0100 "
 X.XXX: ± 0.0050 " X.XXXX: ± 0.0001 "
 ANGLES: $\pm 0.5^\circ$ FINISH: 125 MICRO INCHES
 BREAK ALL SHARP EDGES & CORNERS 1/64" MAX



DRAWN: vernon 1/28/2005
 CHECKED: _____
 DESIGNED: vernon
 ENGINEER: vernon

Cassegrain ADC
 TITLE: AFT DUMMY OPTIC
 PROJECT CODE: _____ DWG NO: A8110
 NEXT ASSY: N/A

2.50°
 DEPTH TO CLEAN-UP SURFACE
 0.75
 0.750 AS REQUIRED FOR FIXTURING
 0.869
 0.079 CHAMFER BOTH SIDES

2X $\phi 0.136 \nabla 0.500$
 8-32 UNC - 2B

$\phi 1.250$ THRU
 $\nabla \phi 1.457 \nabla 0.039$