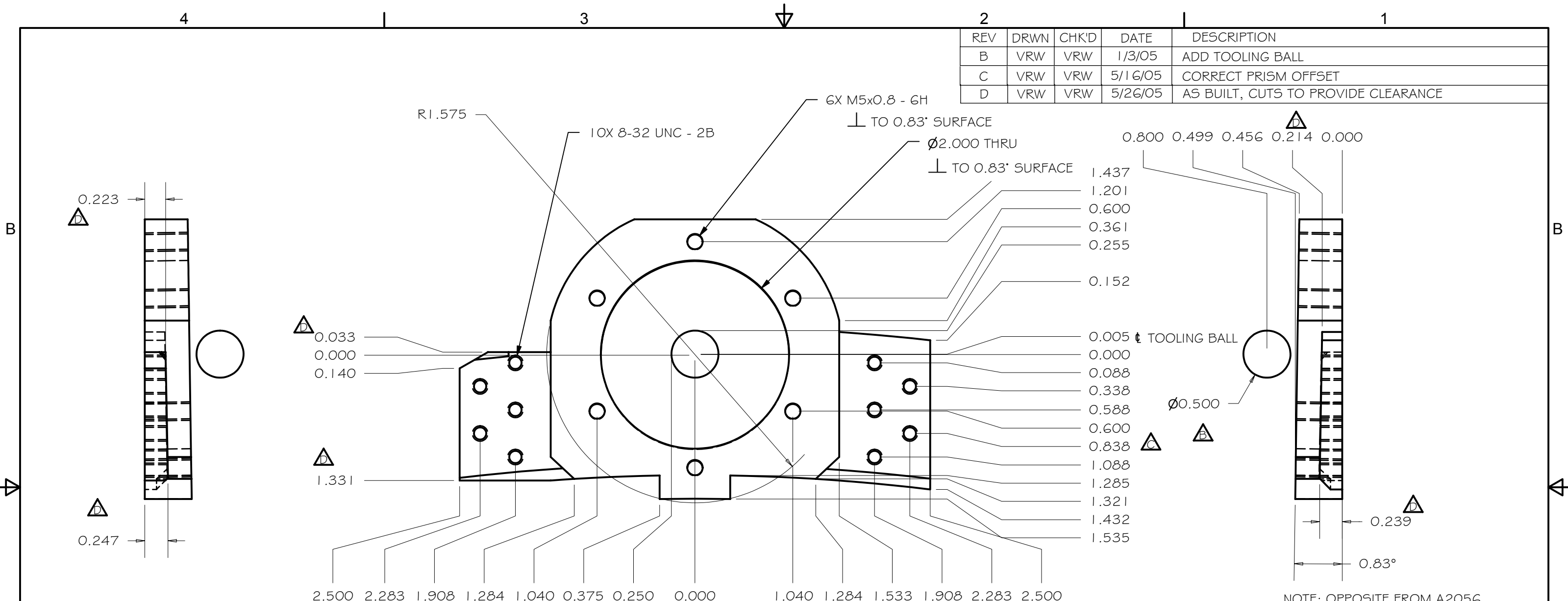


REV	DRWN	CHK'D	DATE	DESCRIPTION
B	VRW	VRW	1/3/05	ADD TOOLING BALL
C	VRW	VRW	5/16/05	CORRECT PRISM OFFSET
D	VRW	VRW	5/26/05	AS BUILT, CUTS TO PROVIDE CLEARANCE



2.500 2.283 1.908 1.284 1.040 0.375 0.250 0.000 1.040 1.284 1.533 1.908 2.283 2.500

0.800 0.499 0.456 0.214 0.000  
 1.437  
 1.201  
 0.600  
 0.361  
 0.255  
 0.152  
 0.005 TOOLING BALL  
 0.000  
 0.088  
 0.338  
 0.588  
 0.600  
 0.838  
 1.088  
 1.285  
 1.321  
 1.432  
 1.535

NOTE: OPPOSITE FROM A2056

SCALE 1 : 1

TOOLING BALL USED TO LOCATE HOLE ON ANGLED SURFACE  
 CENTER OF BALL IS ON AXIS OF Ø1.969 HOLE

TOLERANCES UNLESS OTHERWISE NOTED:  
 FRACTIONAL: 0"-6": ±1/64" 6"-24": ±1/32"  
 24"+: ±1/16"  
 DECIMAL: X.X: ±0.1000" X.XX: ±0.0100"  
 X.XXX: ±0.0050" X.XXXX: ±0.0001"  
 ANGLES: ±0.5° FINISH: 125 MICRO INCHES  
 BREAK ALL SHARP EDGES & CORNERS 1/64" MAX

MATERIAL	FINISH
STEEL	



DRAWN	vernon	12/14/2004
CHECKED		
DESIGNED	vernon	
ENGINEER	vernon	
QTY: 1		

Cassegrain ADC	
TITLE FLANGE, DRIVE, FWD	
PROJECT CODE A2001	DWG NO A2049
REV D	1/1