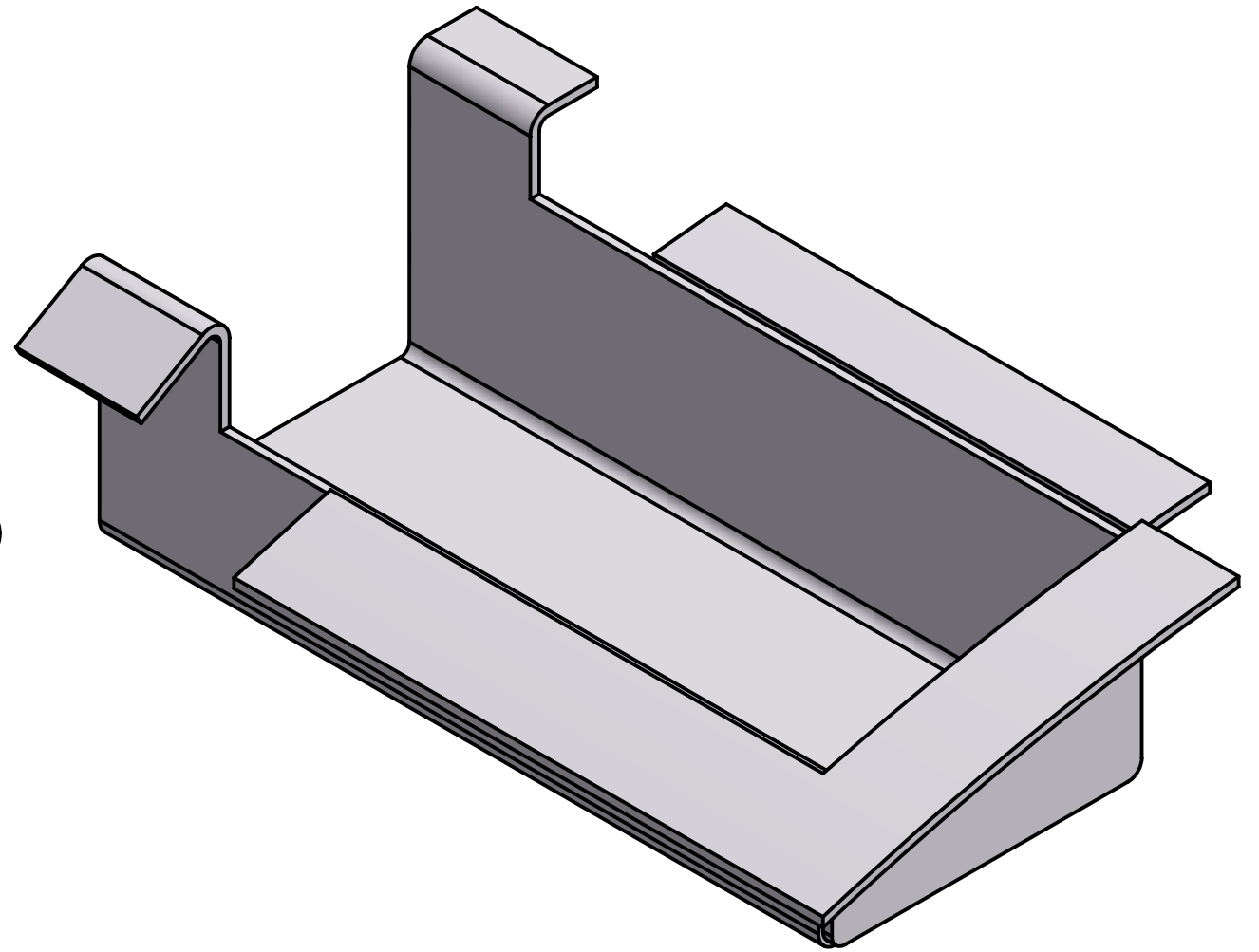
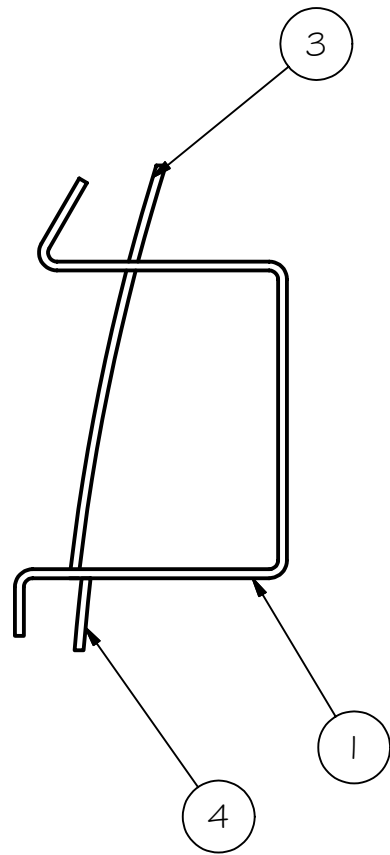
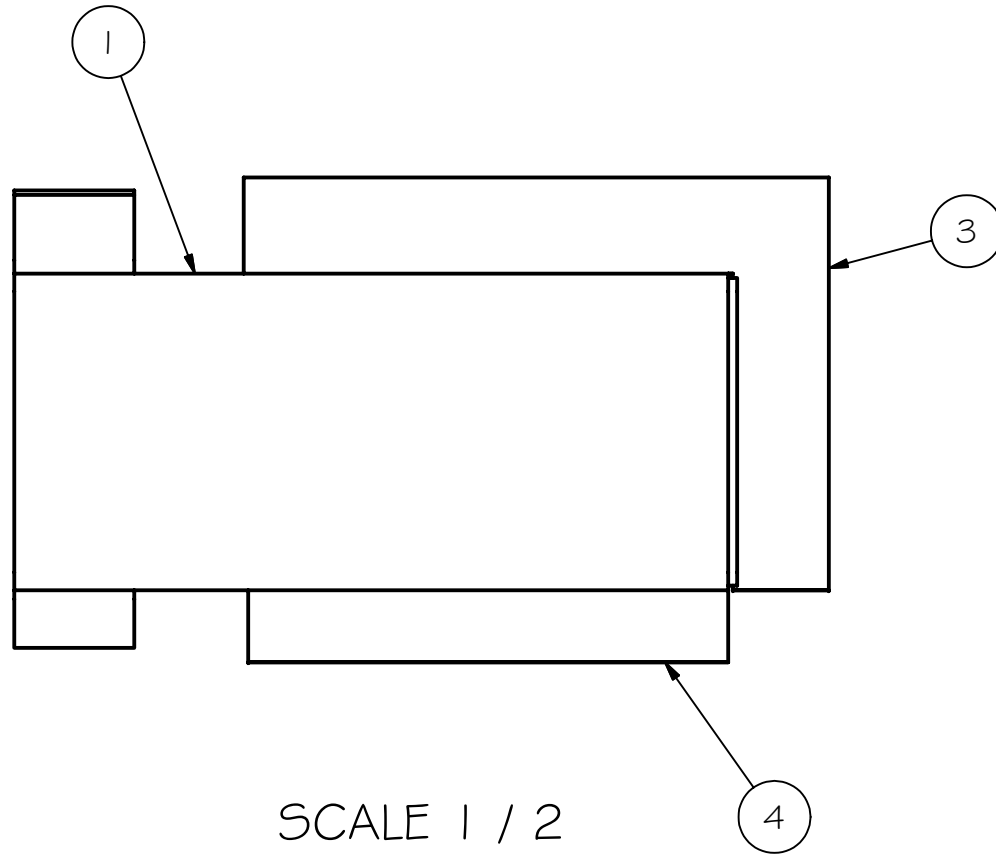
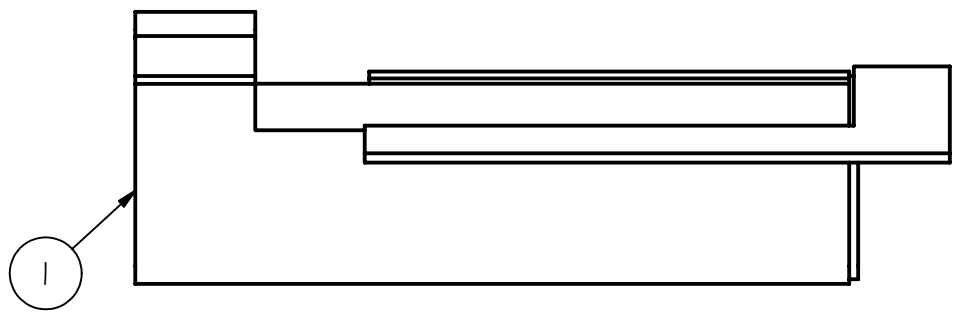
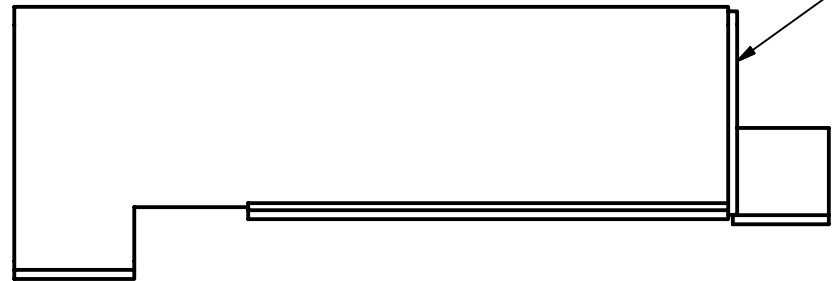


REV	DRWN	CHK'D	DATE	DESCRIPTION
B	VRW	VRW	12/22/04	REDRAW AS ASSEMBLY

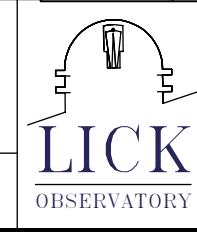


SCALE 1 / 2



Parts List			
ITEM	QTY	PART NUMBER	DESCRIPTION
1	1	A1541	COVER
2	1	A1542	END
3	1	A1543	SIDE
4	1	A1544	SIDE

TOLERANCES UNLESS OTHERWISE NOTED:
 FRACTIONAL: 0"-6": ±1/64" 6"-24": ±1/32"
 24"+: ±1/16"
 DECIMAL: X.X: ±0.1000" X.XX: ±0.0100"
 X.XXX: ±0.0050" X.XXXX: ±0.0001"
 ANGLES: ±0.5° FINISH: 125 MICRO INCHES
 BREAK ALL SHARP EDGES & CORNERS 1/64" MAX



DRAWN	vernon	12/22/2004
CHECKED		
DESIGNED	vernon	
ENGINEER	vernon	
QTY: 1		

Cassegrain ADC	
TITLE CLADDING, MOTOR	
PROJECT CODE A1000	DWG NO A1527
REV B	1/1