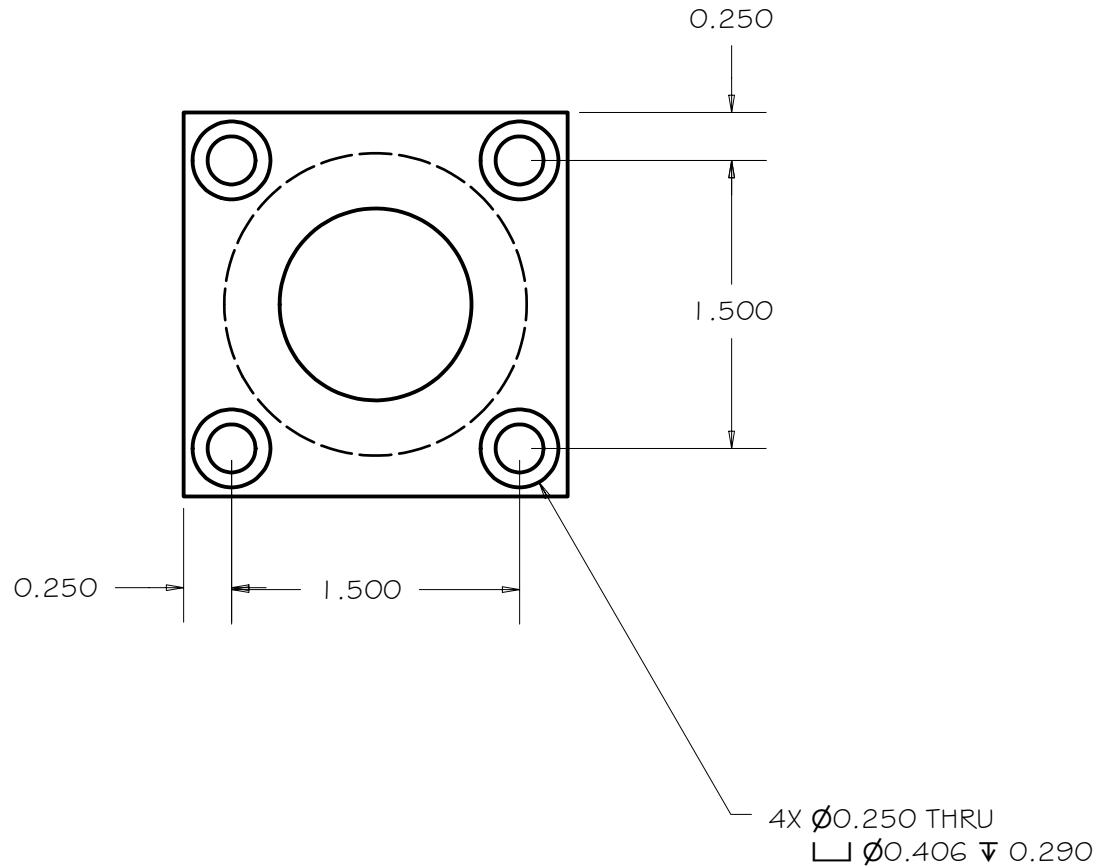
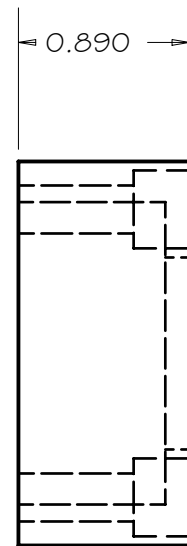
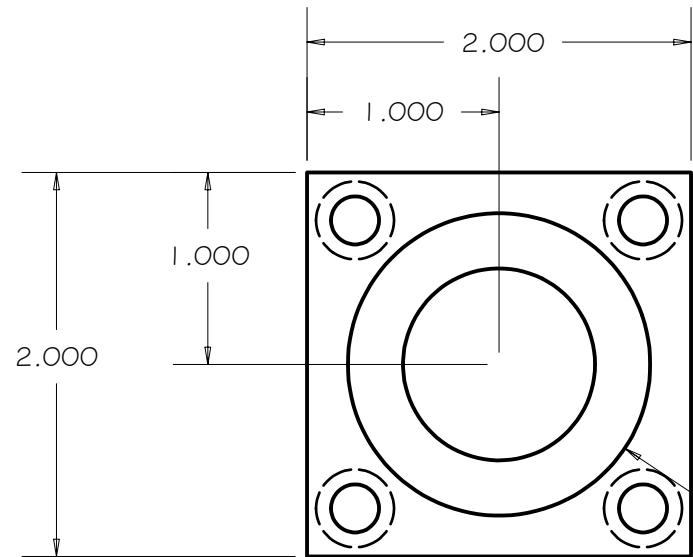


REV	DRWN	CHK'D	DATE	DESCRIPTION
B	VRW	VRW	12/8/04	CHANGE QUANTITY

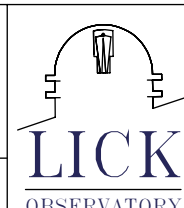


$\varnothing 1.000$ THRU
 $\sqsubset \varnothing 1.575 \nabla 0.765$

4X $\varnothing 0.250$ THRU
 $\sqsubset \varnothing 0.406 \nabla 0.290$

TOLERANCES UNLESS OTHERWISE NOTED:
 FRACTIONAL: 0"-6": $\pm 1/64$ " 6"-24": $\pm 1/32$ "
 24"+: $\pm 1/16$ "
 DECIMAL: X.X: ± 0.1000 " X.XX: ± 0.0100 "
 X.XXX: ± 0.0050 " X.XXXX: ± 0.0001 "
 ANGLES: $\pm 0.5^\circ$ FINISH: 125 MICRO INCHES
 BREAK ALL SHARP EDGES & CORNERS 1/64" MAX

MATERIAL: STEEL
 FINISH: 2



DRAWN: vernon
 CHECKED:
 DESIGNED: vernon
 ENGINEER: vernon

QTY: 2 \triangle

PROJECT CODE: Cassegrain ADC
 TITLE: BEARING CAP

PROJECT CODE: A1200
 DWG NO: A1213

REV: B
 1/1