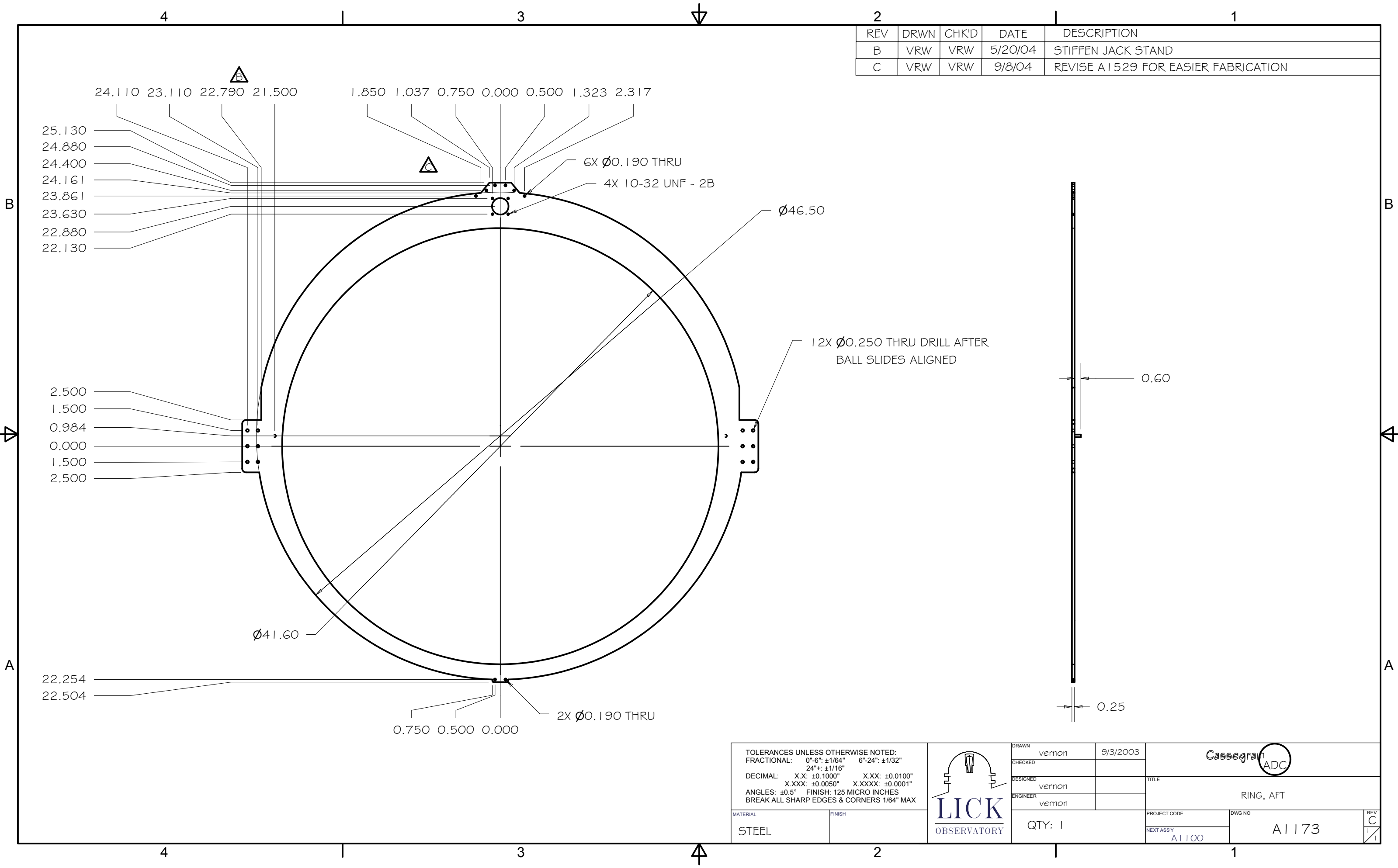


REV	DRWN	CHK'D	DATE	DESCRIPTION
B	VRW	VRW	5/20/04	STIFFEN JACK STAND
C	VRW	VRW	9/8/04	REVISE A1529 FOR EASIER FABRICATION



24.110 23.110 22.790 21.500 1.850 1.037 0.750 0.000 0.500 1.323 2.317

25.130  
24.880  
24.400  
24.161  
23.861  
23.630  
22.880  
22.130

2.500  
1.500  
0.984  
0.000  
1.500  
2.500

22.254  
22.504

6X Ø0.190 THRU  
4X 10-32 UNF - 2B

Ø46.50

1 2X Ø0.250 THRU DRILL AFTER  
BALL SLIDES ALIGNED

Ø41.60

2X Ø0.190 THRU

0.750 0.500 0.000

0.60

0.25

TOLERANCES UNLESS OTHERWISE NOTED:  
 FRACTIONAL: 0"-6": ±1/64" 6"-24": ±1/32"  
 24"+: ±1/16"  
 DECIMAL: X.X: ±0.1000" X.XX: ±0.0100"  
 X.XXX: ±0.0050" X.XXXX: ±0.0001"  
 ANGLES: ±0.5° FINISH: 125 MICRO INCHES  
 BREAK ALL SHARP EDGES & CORNERS 1/64" MAX

MATERIAL	FINISH
STEEL	



DRAWN	vernon	9/3/2003
CHECKED		
DESIGNED	vernon	
ENGINEER	vernon	
QTY: 1		

Cassegrain ADC	
TITLE	
RING, AFT	
PROJECT CODE	DWG NO
Next Assy	A1173
A1100	

REV C  
1/1