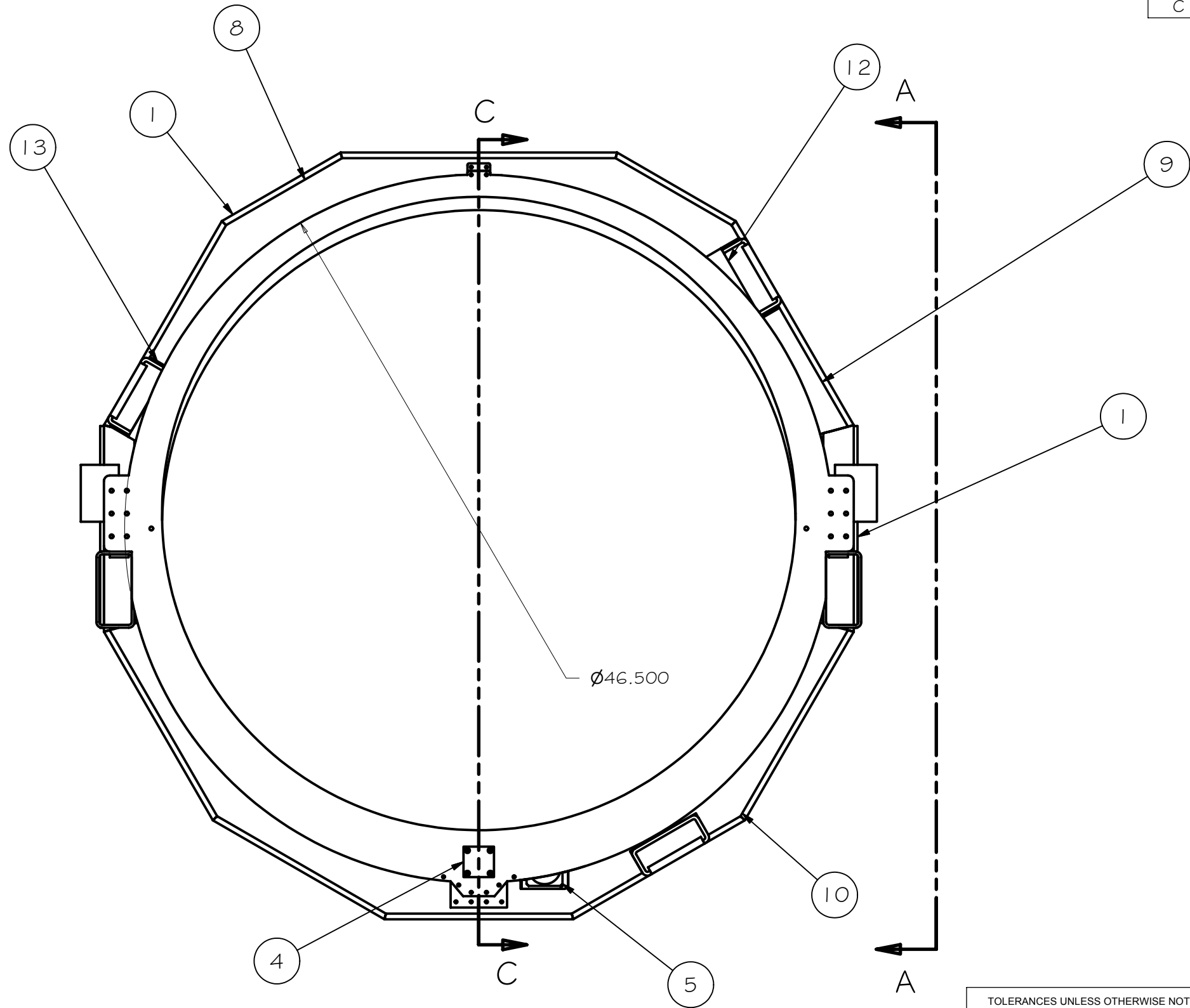


REV	DRWN	CHK'D	DATE	DESCRIPTION
B	VRW	VRW	6-21-04	CHANGE LENGTH
C	VRW	VRW	12-6-04	ADD SHEET 4



Parts List			
ITEM	QTY	PART NUMBER	DESCRIPTION
1	1	A1100	FRAME ASSEMBLY
2	1	A1200	BALL SCREW ASSEMBLY
3	1	A1215	BALL SCREW CAP, FWD
4	1	A1220	BALL SCREW CAP, AFT
5	1	A1300	MOTOR / GEARBOX ASSEMBLY
6	1	A1513	CLADDING FRAME, FWD UPPER
7	1	A1516	CLADDING FRAME, FWD LOWER
8	1	A1519	CLADDING FRAME, AFT UPPER
9	1	A1523	CLADDING FRAME, AFT UPPER
10	1	A1526	CLADDING FRAME, AFT LOWER
11	1	A1527	CLADDING, MOTOR
12	1	A1535	CLADDING FRAME, HARDPOINT
13	1	A1536	CLADDING FRAME, HARDPOINT
14	1	ENCODER	AGILENT HEDL-5540#EOG
15	1	BELT	PIC BELT EPS007OG 15mN

SCALE 1 / 8

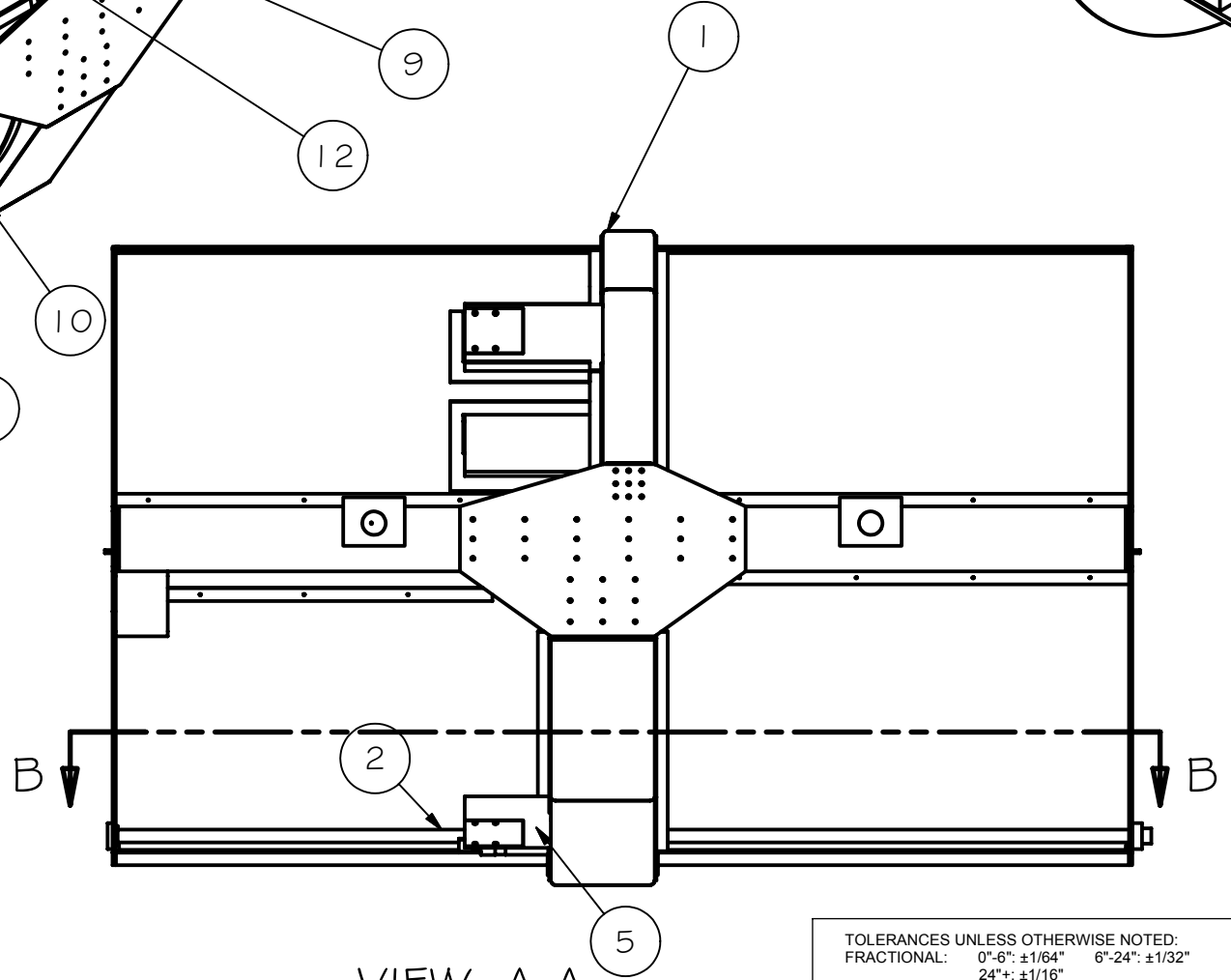
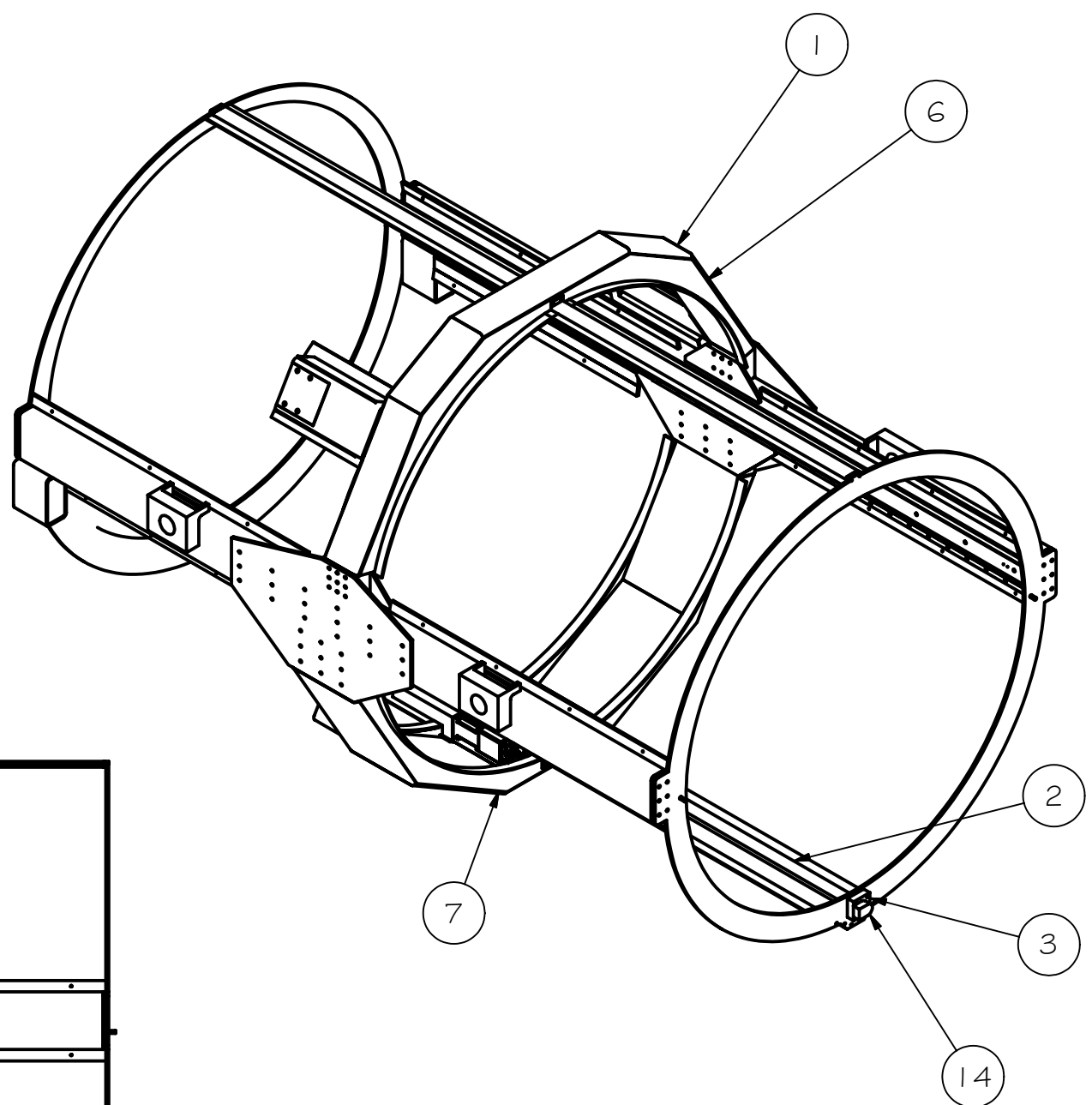
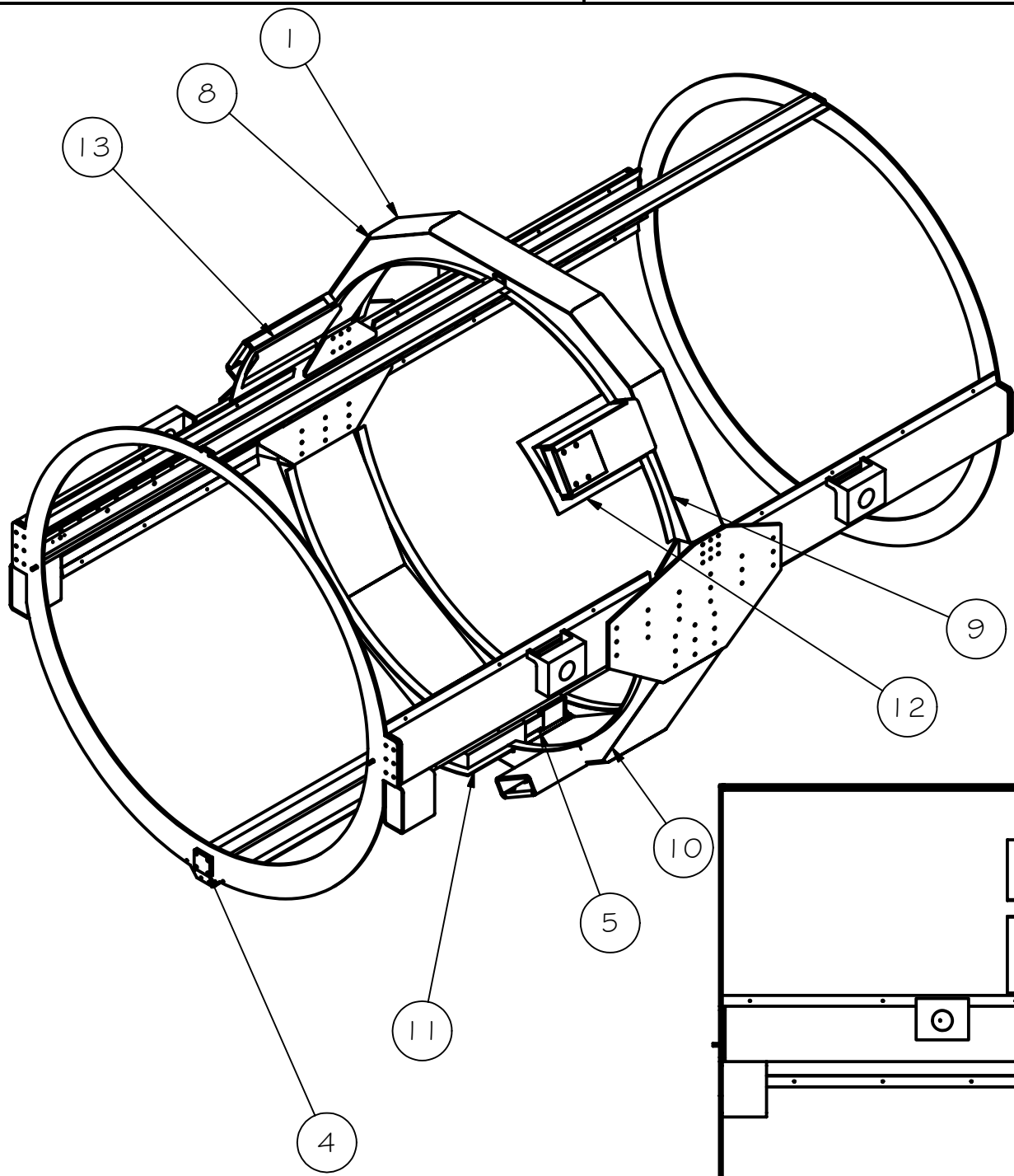
TOLERANCES UNLESS OTHERWISE NOTED:  
 FRACTIONAL: 0"-6": ±1/64" 6"-24": ±1/32"  
 24"+: ±1/16"  
 DECIMAL: X.X: ±0.1000" X.XX: ±0.0100"  
 X.XXX: ±0.0050" X.XXXX: ±0.0001"  
 ANGLES: ±0.5° FINISH: 125 MICRO INCHES  
 BREAK ALL SHARP EDGES & CORNERS 1/64" MAX



DRAWN: vernon 9/2/2003  
 CHECKED: [blank]  
 DESIGNED: vernon  
 ENGINEER: vernon

Cassegrain ADC  
 TITLE: BASE / DRIVE ASSEMBLY  
 PROJECT CODE: A0001  
 DWG NO: A1000  
 REV: C  
 1/4

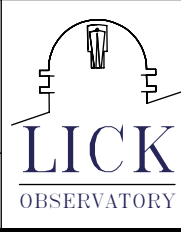
REV	DRWN	CHK'D	DATE	DESCRIPTION



VIEW A-A  
SCALE 0.07 : 1

TOLERANCES UNLESS OTHERWISE NOTED:  
 FRACTIONAL: 0"-6": ±1/64" 6"-24": ±1/32"  
 24"+: ±1/16"  
 DECIMAL: X.X: ±0.1000" X.XX: ±0.0100"  
 X.XXX: ±0.0050" X.XXXX: ±0.0001"  
 ANGLES: ±0.5° FINISH: 125 MICRO INCHES  
 BREAK ALL SHARP EDGES & CORNERS 1/64" MAX

MATERIAL	FINISH



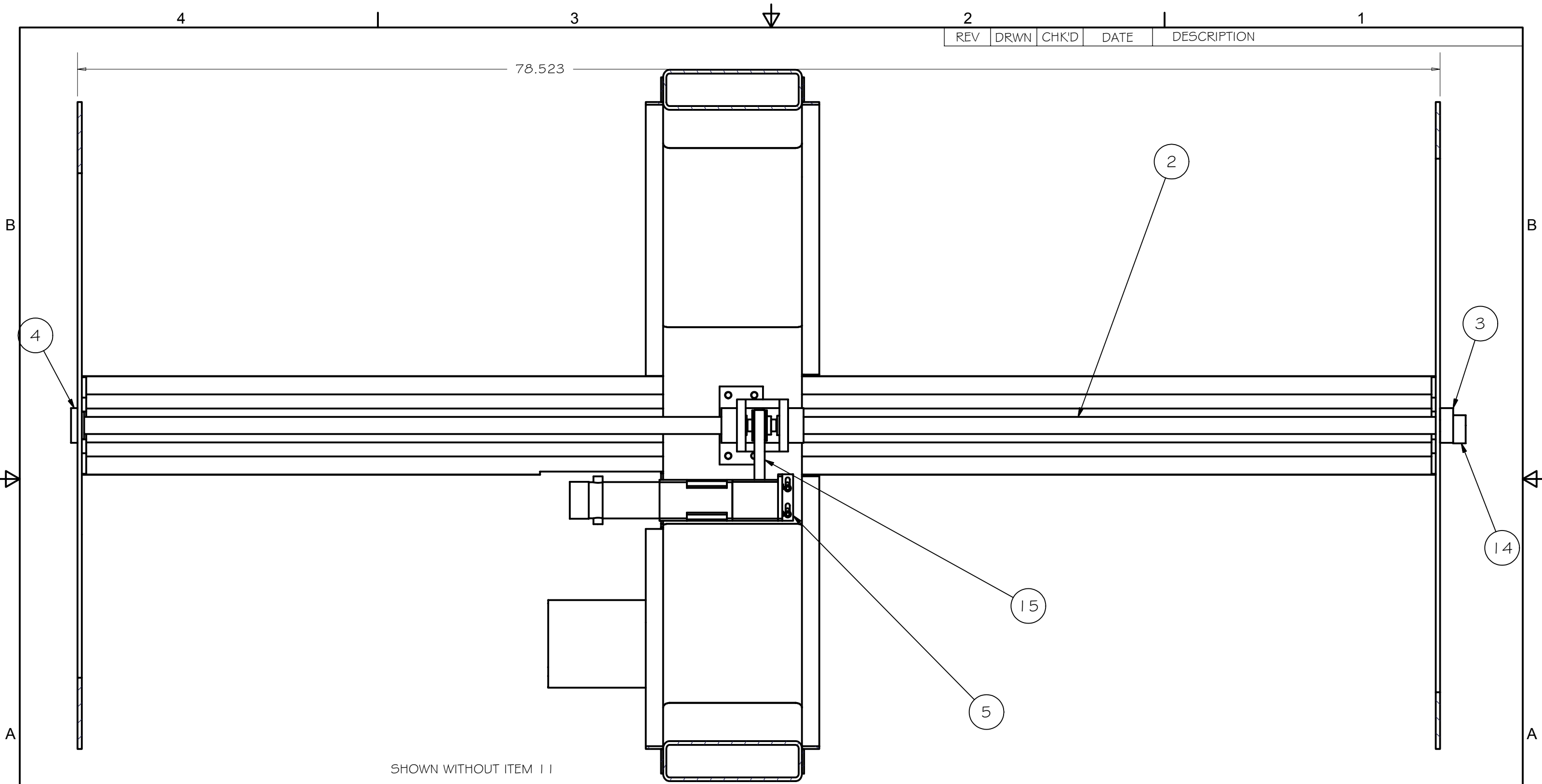
DRAWN	vernon	9/2/2003
CHECKED		
DESIGNED	vernon	
ENGINEER	vernon	

PROJECT CODE		DWG NO	REV
NEXT ASSY		A1000	C
A0001			2/4

Cassegrain ADC

BASE / DRIVE ASSEMBLY

A1000



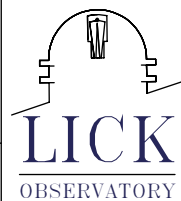
REV	DRWN	CHK'D	DATE	DESCRIPTION

78.523

SHOWN WITHOUT ITEM 11

SECTION B-B  
SCALE 0.19 : 1

TOLERANCES UNLESS OTHERWISE NOTED:  
 FRACTIONAL: 0"-6": ±1/64" 6"-24": ±1/32"  
 24"+: ±1/16"  
 DECIMAL: X.X: ±0.1000" X.XX: ±0.0100"  
 X.XXX: ±0.0050" X.XXXX: ±0.0001"  
 ANGLES: ±0.5° FINISH: 125 MICRO INCHES  
 BREAK ALL SHARP EDGES & CORNERS 1/64" MAX



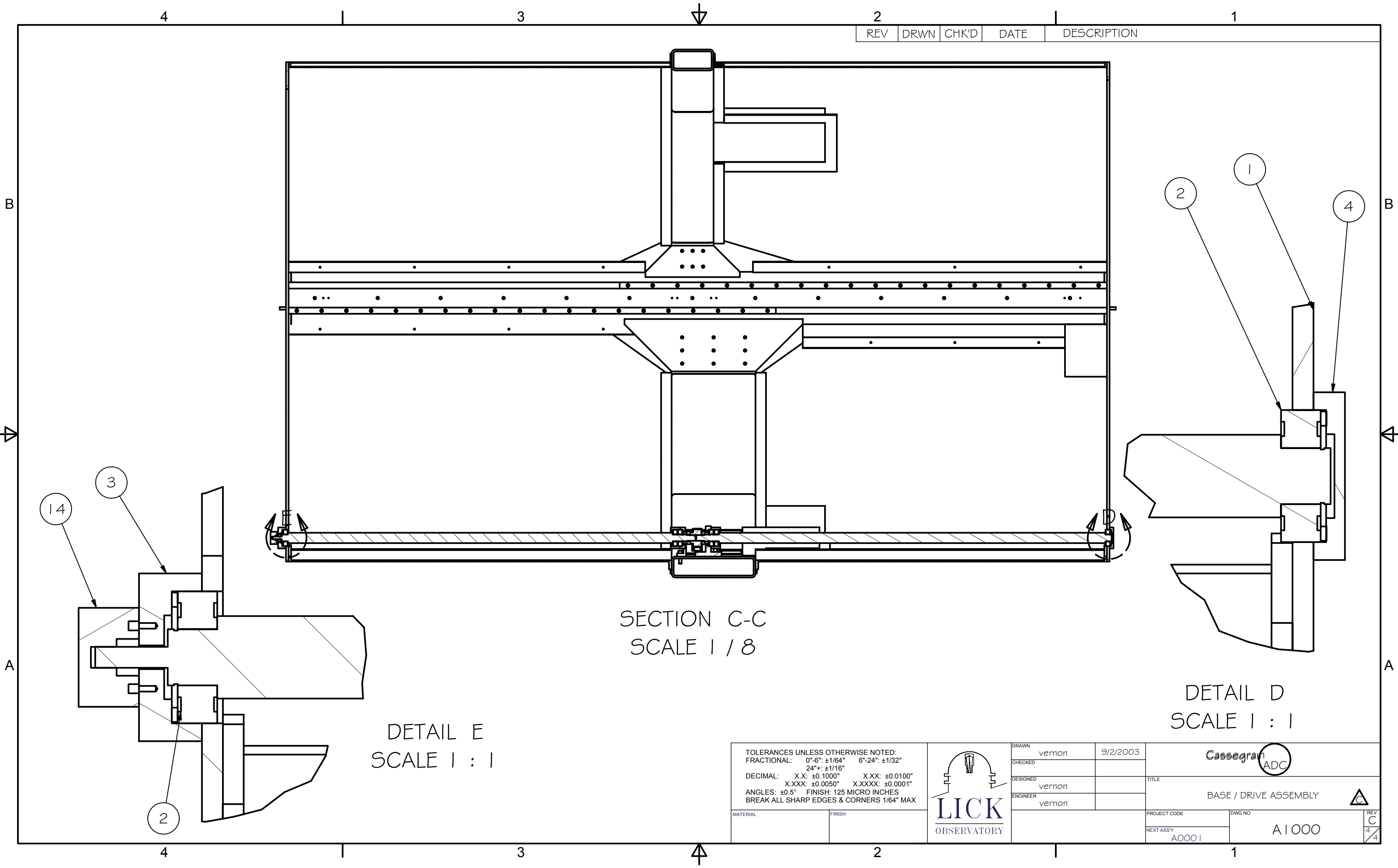
DRAWN	vernon	9/2/2003
CHECKED		
DESIGNED	vernon	
ENGINEER	vernon	

PROJECT CODE		DWG NO
NEXT ASSY		REV
A0001	A1000	C 3/4

Cassegrain ADC

BASE / DRIVE ASSEMBLY

REV	DRWN	CHK'D	DATE	DESCRIPTION



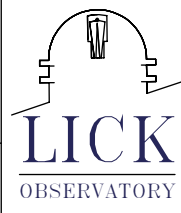
SECTION C-C  
SCALE 1 / 8

DETAIL E  
SCALE 1 : 1

DETAIL D  
SCALE 1 : 1

TOLERANCES UNLESS OTHERWISE NOTED:  
 FRACTIONAL: 0"-6": ±1/64" 6"-24": ±1/32"  
 24"+: ±1/16"  
 DECIMAL: X.X: ±0.1000" X.XX: ±0.0100"  
 X.XXX: ±0.0050" X.XXXX: ±0.0001"  
 ANGLES: ±0.5° FINISH: 125 MICRO INCHES  
 BREAK ALL SHARP EDGES & CORNERS 1/64" MAX

MATERIAL	FINISH



DRAWN	vernon	9/2/2003
CHECKED		
DESIGNED	vernon	
ENGINEER	vernon	

PROJECT CODE		DWG NO	REV
A0001		A1000	C
NEXT ASSY			4
			4

Cassegrain ADC

BASE / DRIVE ASSEMBLY

