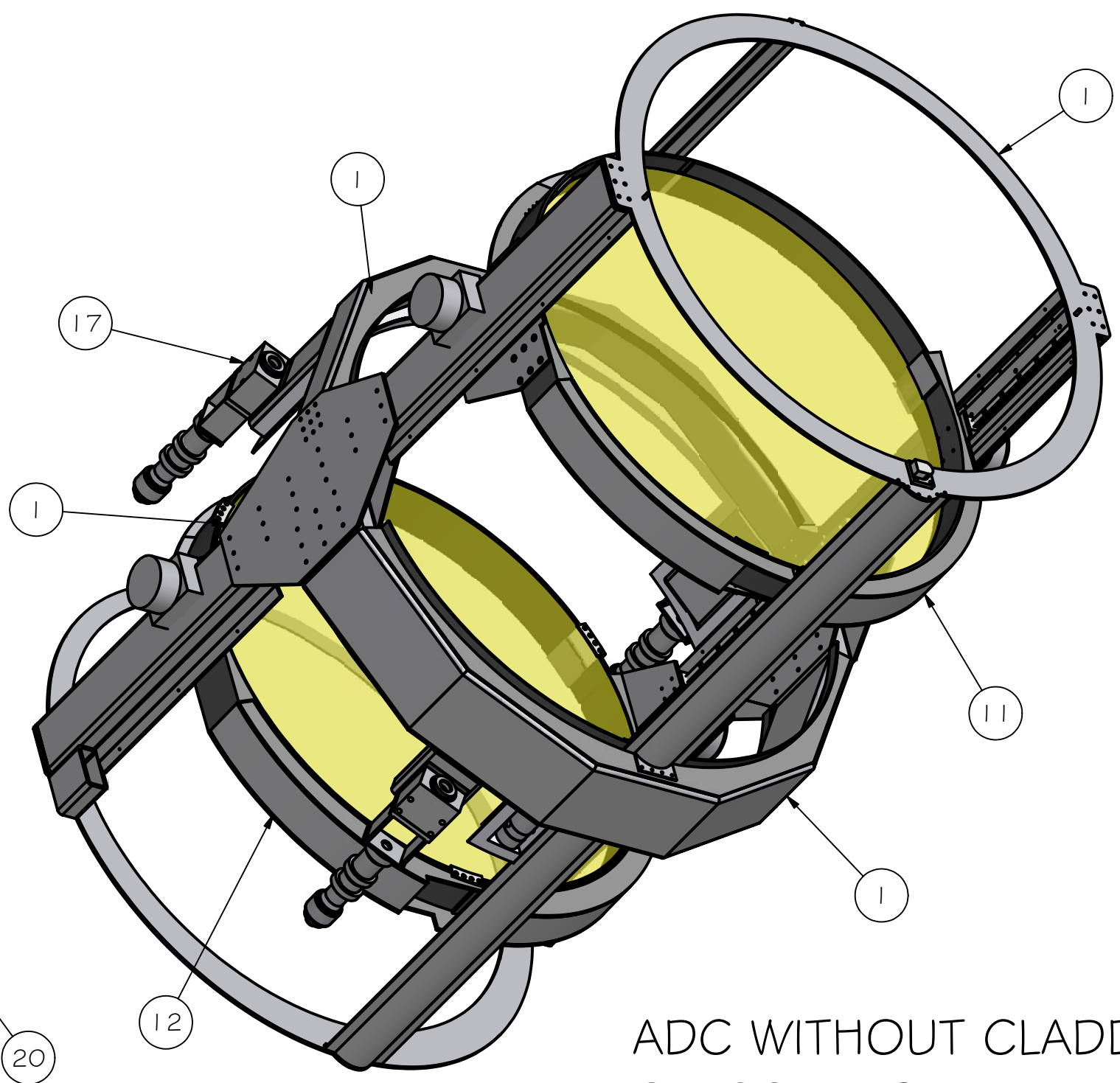
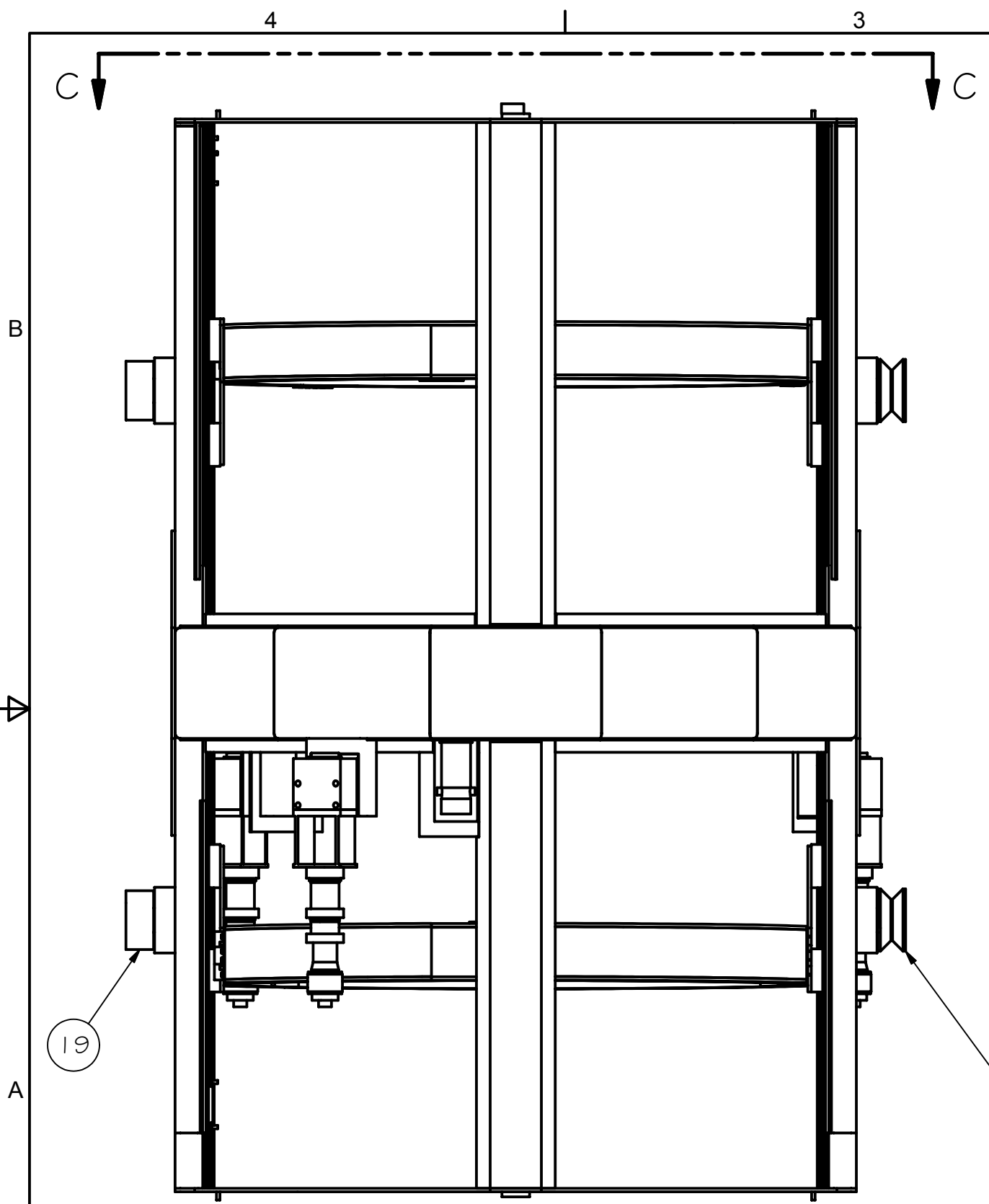


REV	DRWN	CHK'D	DATE	DESCRIPTION



ADC WITHOUT CLADDING
OR COVERS

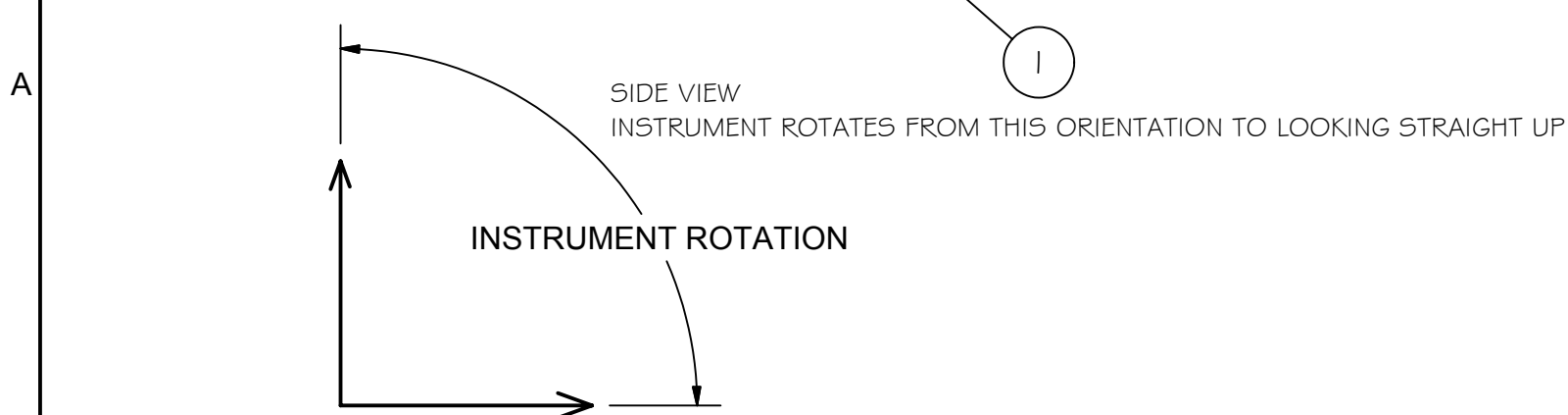
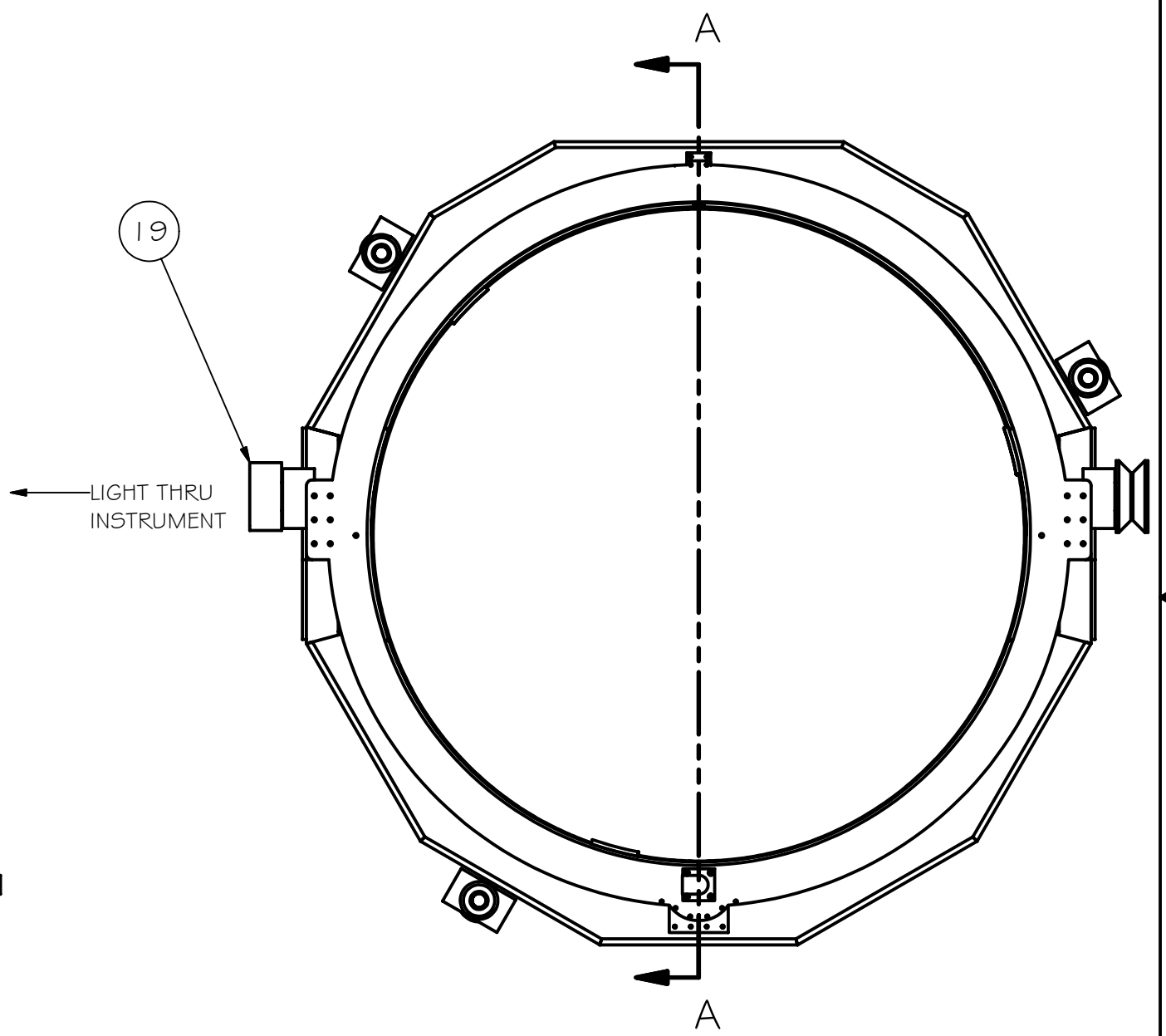
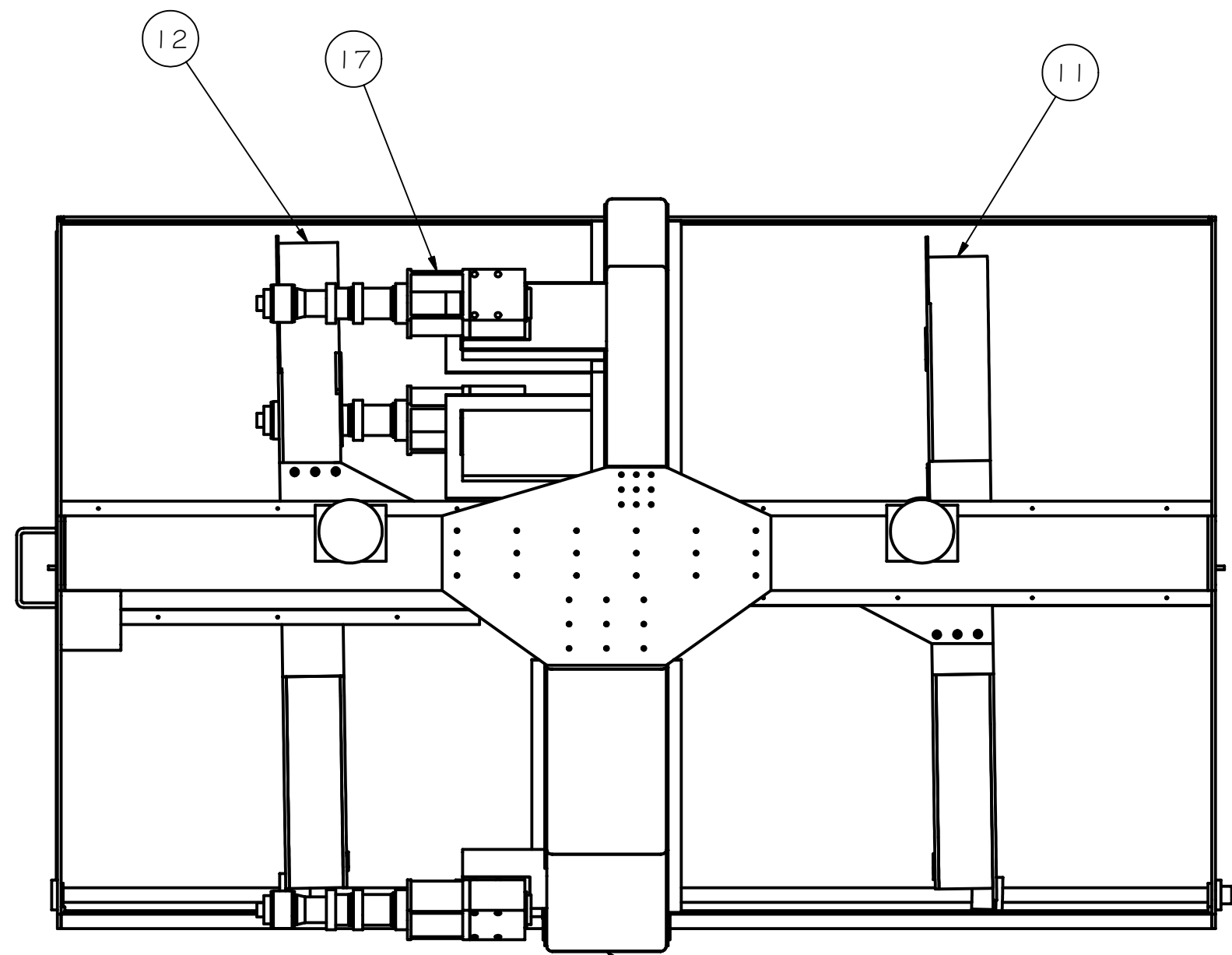
TOLERANCES UNLESS OTHERWISE NOTED:
 FRACTIONAL: 0"-6": ±1/64" 6"-24": ±1/32"
 24"+: ±1/16"
 DECIMAL: X.X: ±0.1000" X.XX: ±0.0100"
 X.XXX: ±0.0050" X.XXXX: ±0.0001"
 ANGLES: ±0.5° FINISH: 125 MICRO INCHES
 BREAK ALL SHARP EDGES & CORNERS 1/64" MAX



DRAWN	vernon	7/22/2003
CHECKED		
DESIGNED	vernon	
ENGINEER	vernon	

Cassegrain ADC	
ADC ASSEMBLY	
PROJECT CODE	DWG NO
NEXT ASSY	A0001
TOP LEVEL	REV A 1/4

REV	DRWN	CHK'D	DATE	DESCRIPTION



TOLERANCES UNLESS OTHERWISE NOTED:
 FRACTIONAL: 0"-6": ±1/64" 6"-24": ±1/32"
 24"+: ±1/16"
 DECIMAL: X.X: ±0.1000" X.XX: ±0.0100"
 X.XXX: ±0.0050" X.XXXX: ±0.0001"
 ANGLES: ±0.5° FINISH: 125 MICRO INCHES
 BREAK ALL SHARP EDGES & CORNERS 1/64" MAX

MATERIAL	FINISH



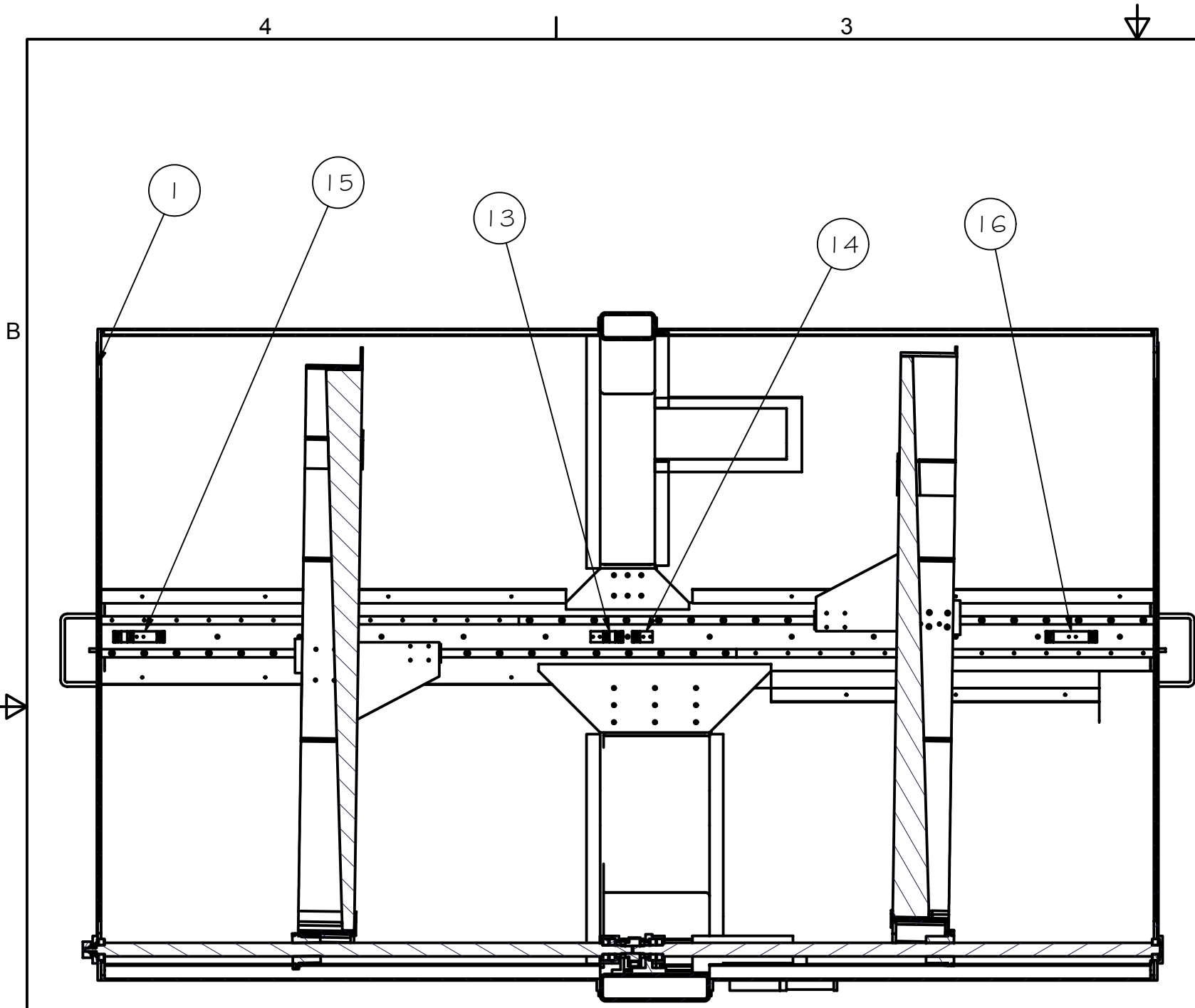
DRAWN	vernon	7/22/2003
CHECKED		
DESIGNED	vernon	
ENGINEER	vernon	

PROJECT CODE		DWG NO	REV
NEXT ASSY		A0001	A
TOP LEVEL			2/4

Cassegrain ADC

ADC ASSEMBLY

A0001

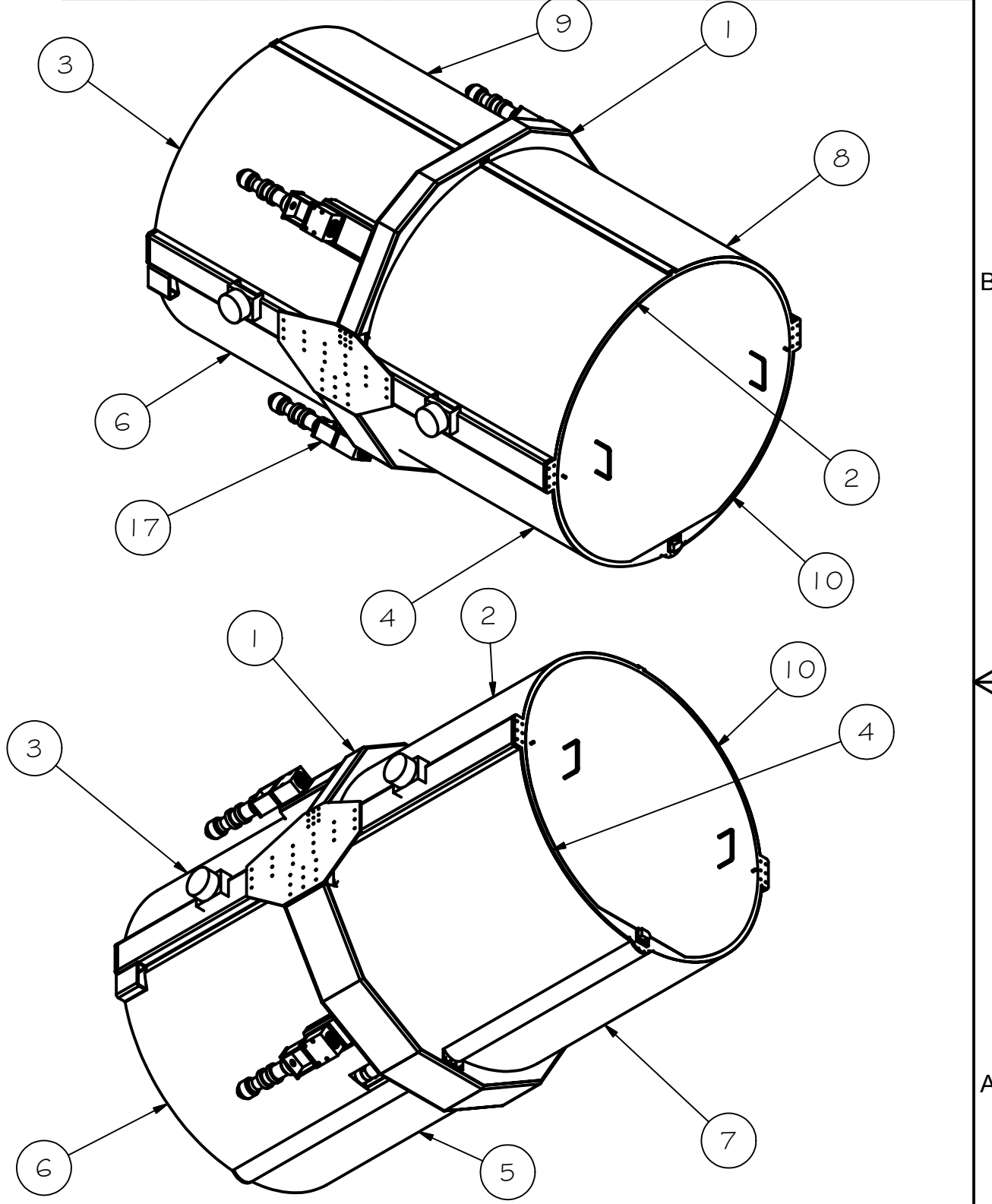


SECTION A-A
SCALE 1 / 10

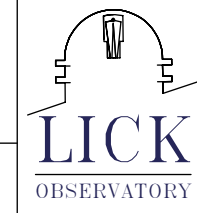
NOTES:

- 1) CLADDING HOLES NOT GENERALLY SHOWN.
MATCH DRILL FOR 8-32 SOCKET BUTTON CAP SCREWS
ON APPROX. 8" CENTERS
- 2) TOTAL WEIGHT = 1250 LB.
- 3) PAINT ALL STEEL SURFACES BLACK WITH AMERON 385
- 4) FLOCK INSIDE SURFACES WITH ULTRA-POL UP-V-W/PSA

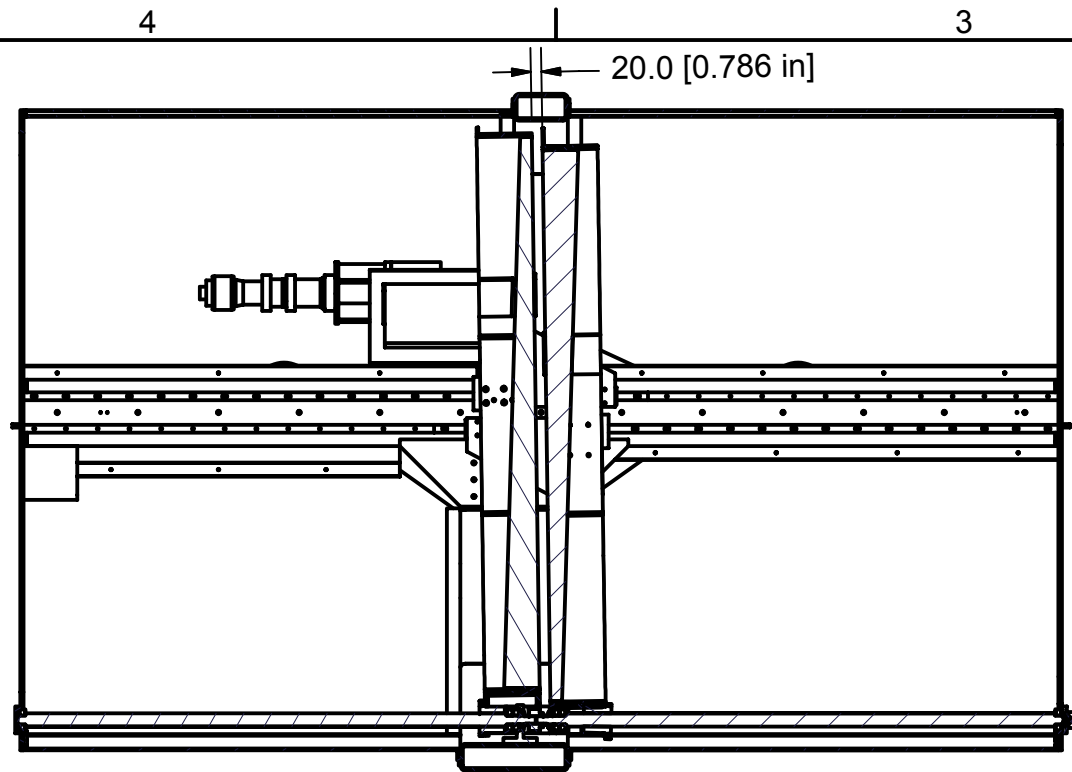
REV	DRWN	CHK'D	DATE	DESCRIPTION
-----	------	-------	------	-------------



TOLERANCES UNLESS OTHERWISE NOTED: FRACTIONAL: 0"-6": ±1/64" 6"-24": ±1/32" 24"+: ±1/16" DECIMAL: X.X: ±0.1000" X.XX: ±0.0100" X.XXX: ±0.0050" X.XXXX: ±0.0001" ANGLES: ±0.5° FINISH: 125 MICRO INCHES BREAK ALL SHARP EDGES & CORNERS 1/64" MAX		DRAWN: vernon CHECKED: DESIGNED: vernon ENGINEER: vernon	7/22/2003 PROJECT CODE: TOP LEVEL DWG NO: A0001	Cassegrain ADC ADC ASSEMBLY	REV A 3/4
--	--	---	---	------------------------------------	--------------

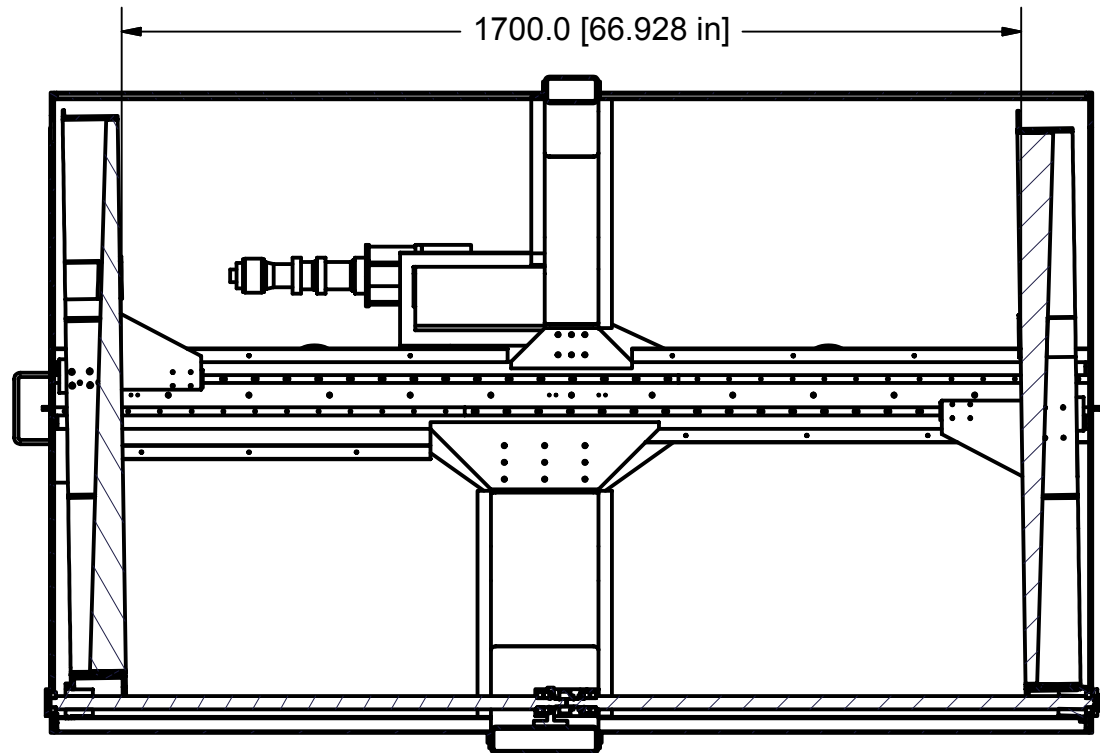


REV	DRWN	CHK'D	DATE	DESCRIPTION



NULL CORRECTION, SHOWN WITHOUT CLADDING OR COVERS

SECTION G-G
SCALE 0.07 : 1



FULL CORRECTION, SHOWN WITHOUT CLADDING OR COVERS

SECTION F-F
SCALE 0.07 : 1

Parts List			
ITEM	QTY	PART NUMBER	DESCRIPTION
1	1	A1000	BASE / DRIVE ASSEMBLY
2	1	A1501	FWD CLADDING UPPER
3	1	A1502	AFT CLADDING UPPER
4	1	A1503	FWD CLADDING LOWER
5	1	A1504	AFT CLADDING LOWER
6	1	A1505	AFT CLADDING LOWER
7	1	A1506	FWD CLADDING LOWER
8	1	A1507	FWD CLADDING UPPER
9	1	A1508	AFT CLADDING UPPER
10	2	A1510	COVER ASSEMBLY, FWD
11	1	A2001	FWD CELL ASSEMBLY
12	1	A2002	AFT CELL ASSEMBLY
13	1	A3015	FIDUCAL ASSEMBLY, DOUBLE
14	1	A3016	FIDUCAL ASSEMBLY, SINGLE
15	1	A3017	FIDUCAL ASSEMBLY, TRIPLE
16	1	A3019	FIDUCAL ASSEMBLY, WIDE DOUBLE
17	3	A4001	HARDPOINT INSTRUMENT SIDE
18	1	nut_1-qtr	
19	2	ROLLER - FLAT	OSBORN PLR-4 1/2
20	2	ROLLER - V	OSBORN VLR-4 1/2
21	1	washer_1-qtr	

TOLERANCES UNLESS OTHERWISE NOTED:
 FRACTIONAL: 0"-6": ±1/64" 6"-24": ±1/32"
 24"+: ±1/16"
 DECIMAL: X.X: ±0.1000" X.XX: ±0.0100"
 X.XXX: ±0.0050" X.XXXX: ±0.0001"
 ANGLES: ±0.5° FINISH: 125 MICRO INCHES
 BREAK ALL SHARP EDGES & CORNERS 1/64" MAX



DRAWN: vernon 7/22/2003
 CHECKED:
 DESIGNED: vernon
 ENGINEER: vernon

Cassegrain ADC
 TITLE: ADC ASSEMBLY
 PROJECT CODE:
 DWG NO: A0001
 NEXT ASSY: TOP LEVEL
 REV: A
 4/4