

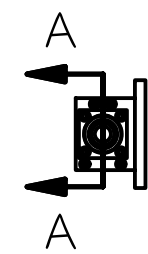
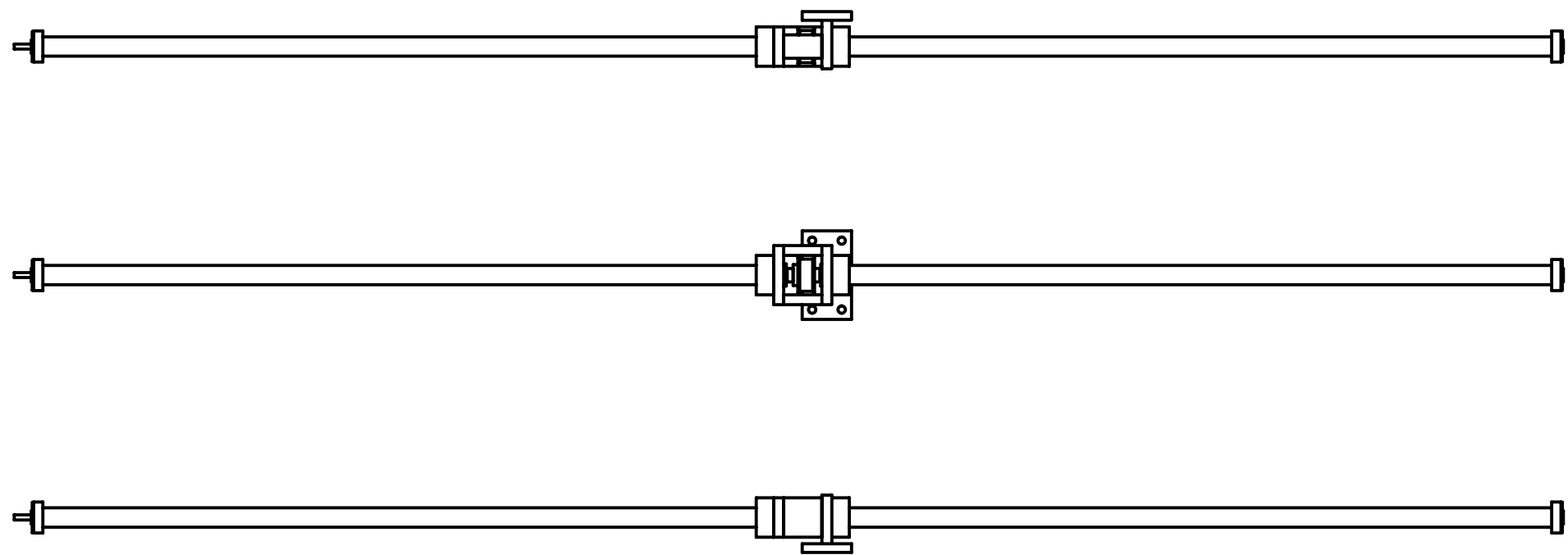
4

3

2

1

REV	DRWN	CHK'D	DATE	DESCRIPTION
-----	------	-------	------	-------------



Parts List			
ITEM	QTY	PART NUMBER	DESCRIPTION
1	1	A1210	THK 2505-5 SCREW, FWD
2	1	A1211	THK 2505-5 SCREW, AFT
3	1	A1212	BEARING HOUSING
4	2	A1213	BEARING CAP
5	1	A1214	BEARING HOUSING, AFT
7	1	A1216	SPACER
8	1	A1217	SPACER
9	2	A1218	SLEEVE
10	1	A1219	PIC PULLEY PT026G08L15T
11	6	skf_6203	SKF 6203
12	2	SKF_N-03	SKF N-03
13	2	SKF_W-03	SKF W-03
14	4	WAVE SPRING	WAVE SPRING ,McMaster-Carr # 9714K66

TOLERANCES UNLESS OTHERWISE NOTED:
 FRACTIONAL: 0"-6": ±1/64" 6"-24": ±1/32"
 24"+: ±1/16"
 DECIMAL: X.X: ±0.1000" X.XX: ±0.0100"
 X.XXX: ±0.0050" X.XXXX: ±0.0001"
 ANGLES: ±0.5° FINISH: 125 MICRO INCHES
 BREAK ALL SHARP EDGES & CORNERS 1/64" MAX



DRAWN	vernon	8/20/2003
CHECKED		
DESIGNED	vernon	
ENGINEER	vernon	

Cassegrain ADC	
TITLE: BALL SCREW ASSEMBLY	
PROJECT CODE	DWG NO
1A000	A1200
REV	A
1/2	2

4

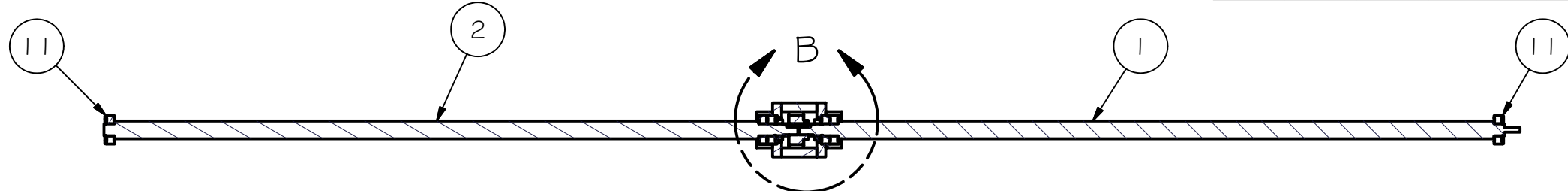
3

2

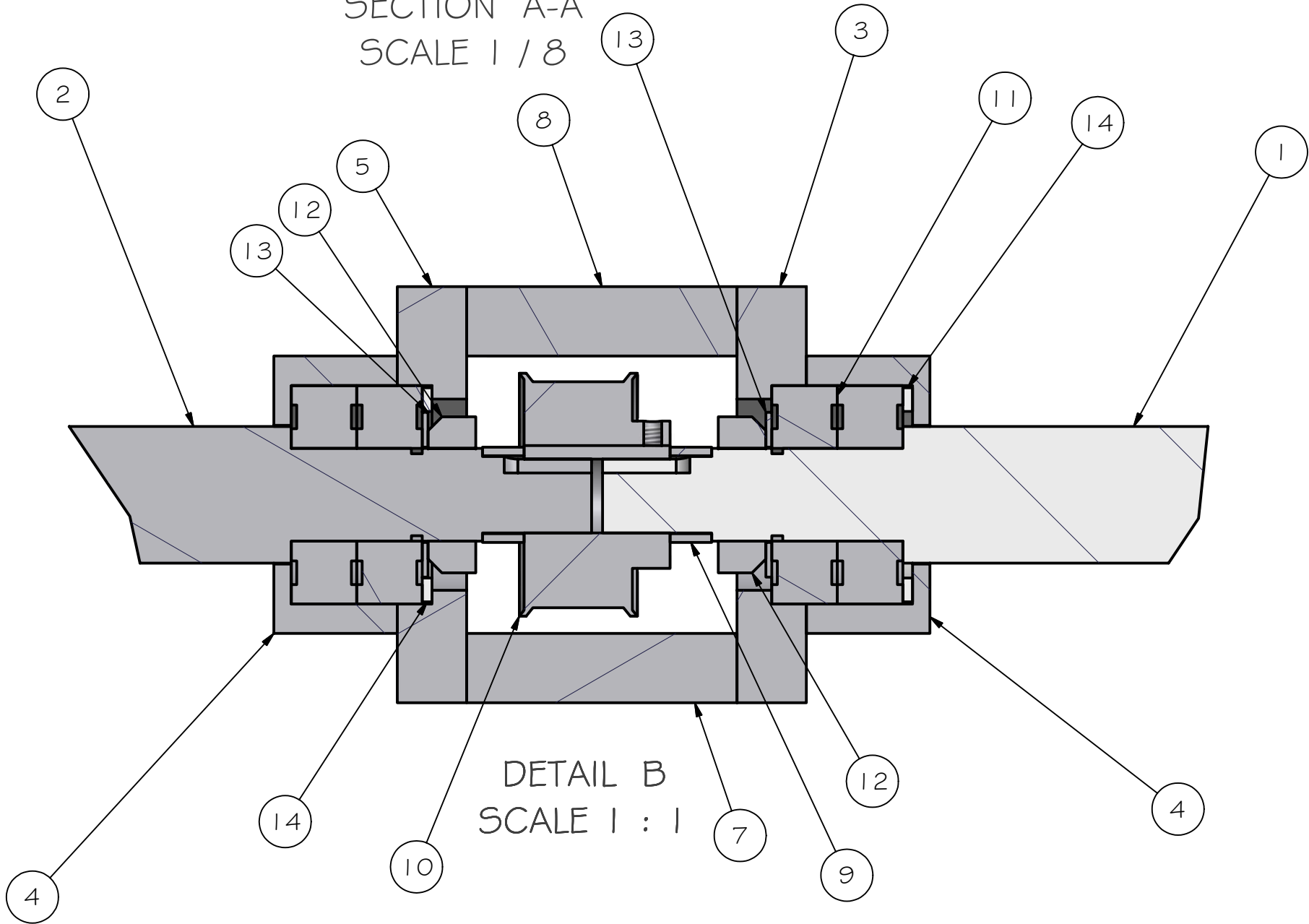
1

4 | 3 | 2 | 1

REV	DRWN	CHK'D	DATE	DESCRIPTION



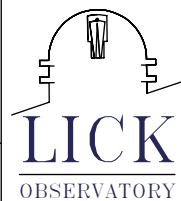
SECTION A-A
SCALE 1 / 8



DETAIL B
SCALE 1 : 1

TOLERANCES UNLESS OTHERWISE NOTED:
 FRACTIONAL: 0"-6": ±1/64" 6"-24": ±1/32"
 24"+: ±1/16"
 DECIMAL: X.X: ±0.1000" X.XX: ±0.0100"
 X.XXX: ±0.0050" X.XXXX: ±0.0001"
 ANGLES: ±0.5° FINISH: 125 MICRO INCHES
 BREAK ALL SHARP EDGES & CORNERS 1/64" MAX

MATERIAL	FINISH



DRAWN	vernon	8/20/2003
CHECKED		
DESIGNED	vernon	
ENGINEER	vernon	

QTY: 1

PROJECT CODE		DWG NO	REV
NEXT ASSY		A1200	A
A1000		2	2

Cassegrain ADC

BALL SCREW ASSEMBLY

B

B

A

A

4 | 3 | 2 | 1