

| REV | DRWN | CHKD | DATE | DESCRIPTION |
|-----|------|------|------|-------------|
| | | | | |

TOLERANCES UNLESS OTHERWISE NOTED:
 FRACTIONAL: 0"-6": ±1/64" 6"-24": ±1/32"
 24": ±1/16"
 DECIMAL: X.X: ±0.1000" X.XX: ±0.0100"
 X.XXX: ±0.0050" X.XXXX: ±0.0001"
 ANGLES: ±0.5° FINISH: 125 MICRO INCHES
 BREAK ALL SHARP EDGES & CORNERS 1/64" MAX



| | | |
|--------------------|-----------|-----------------------|
| DRAWN vernon | 8/27/2003 | Cassegrain ADC |
| CHECKED | | |
| DESIGNED vernon | | TITLE JACK STAND |
| ENGINEER vernon | | PROJECT CODE A0003 |
| MATERIAL | FINISH | DWG NO. A5001 |

NET
A
1
3

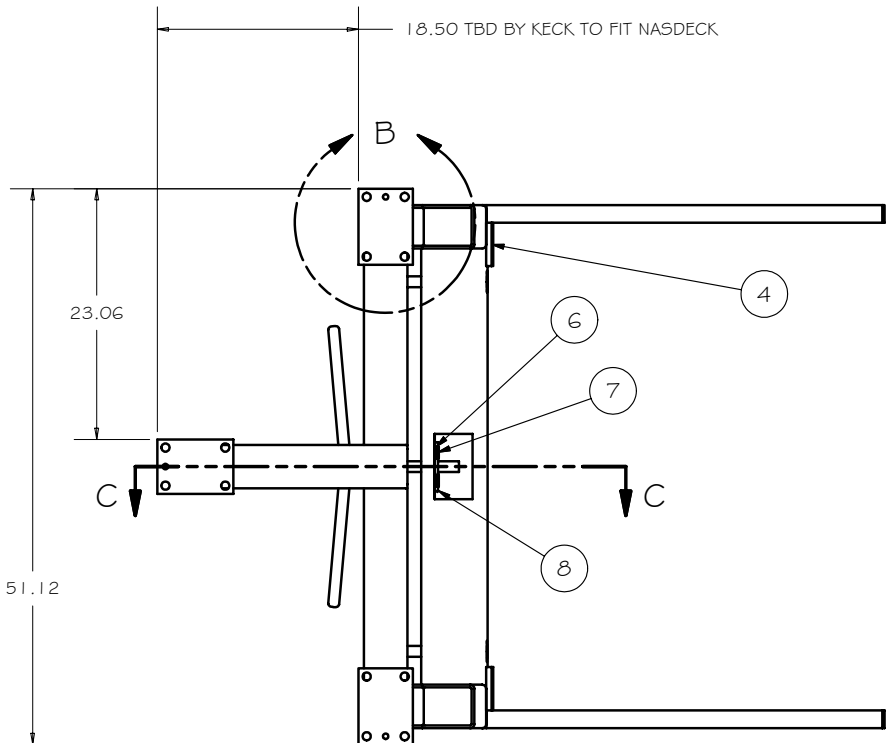
4

3

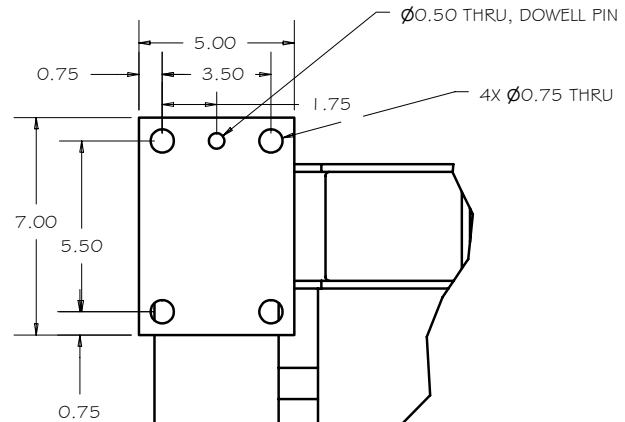
2

1

| REV | DRWN | CHKD | DATE | DESCRIPTION |
|-----|------|------|------|-------------|
|-----|------|------|------|-------------|



VIEW A-A
SCALE 0.09 : 1



TYPICAL 3 PCS
DETAIL B
SCALE 1 / 4

| Parts List | | | |
|------------|-----|-------------|---------------------------|
| ITEM | QTY | PART NUMBER | DESCRIPTION |
| 1 | 1 | A5010 | BASE WELDMENT |
| 2 | 1 | A5020 | PIVOT WELDMENT |
| 3 | 1 | A5030 | ACME SCREW WELDMENT |
| 4 | 2 | A5041 | BUMPER |
| 5 | 2 | A5042 | 1/2" DOWEL PIN |
| 6 | 2 | A5043 | PIVOT MOUNT |
| 7 | 2 | A5044 | PIVOT CLAMP |
| 8 | 1 | A5045 | ACME PIVOT |
| 9 | 1 | A5046 | BEARING MOUNT |
| 10 | 2 | A5047 | HINGE |
| 11 | 2 | ---- | 1" X 1 1/2" SHOULDER BOLT |

TOLERANCES UNLESS OTHERWISE NOTED:
 FRACTIONAL: 0"-6": ±1/64" 6"-24": ±1/32"
 24": ±1/16"
 DECIMAL: X.X: ±0.1000" X.XX: ±0.0100"
 X.XXX: ±0.0050" X.XXXX: ±0.0001"
 ANGLES: ±0.5° FINISH: 125 MICRO INCHES
 BREAK ALL SHARP EDGES & CORNERS 1/64" MAX



| | | | | | | | | |
|-----------------------|-------------------|--|-----|---|--|---|--|---|
| DRAWN vernon | DATE 8/27/2003 | | | | | | | |
| CHECKED | | | | | | | | |
| DESIGNED vernon | ENGINEER | TITLE JACK STAND | | | | | | |
| PROJECT CODE A0003 | DWG NO. A5001 | <table border="1"> <tr> <td>REV</td> <td>A</td> </tr> <tr> <td></td> <td>2</td> </tr> <tr> <td></td> <td>3</td> </tr> </table> | REV | A | | 2 | | 3 |
| REV | A | | | | | | | |
| | 2 | | | | | | | |
| | 3 | | | | | | | |

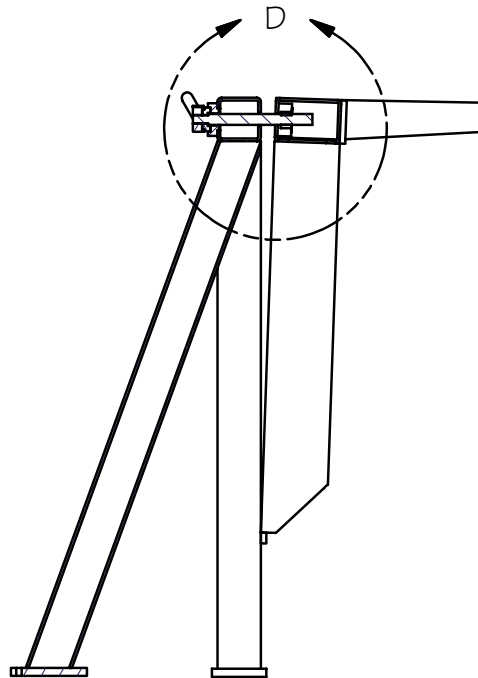
4

3

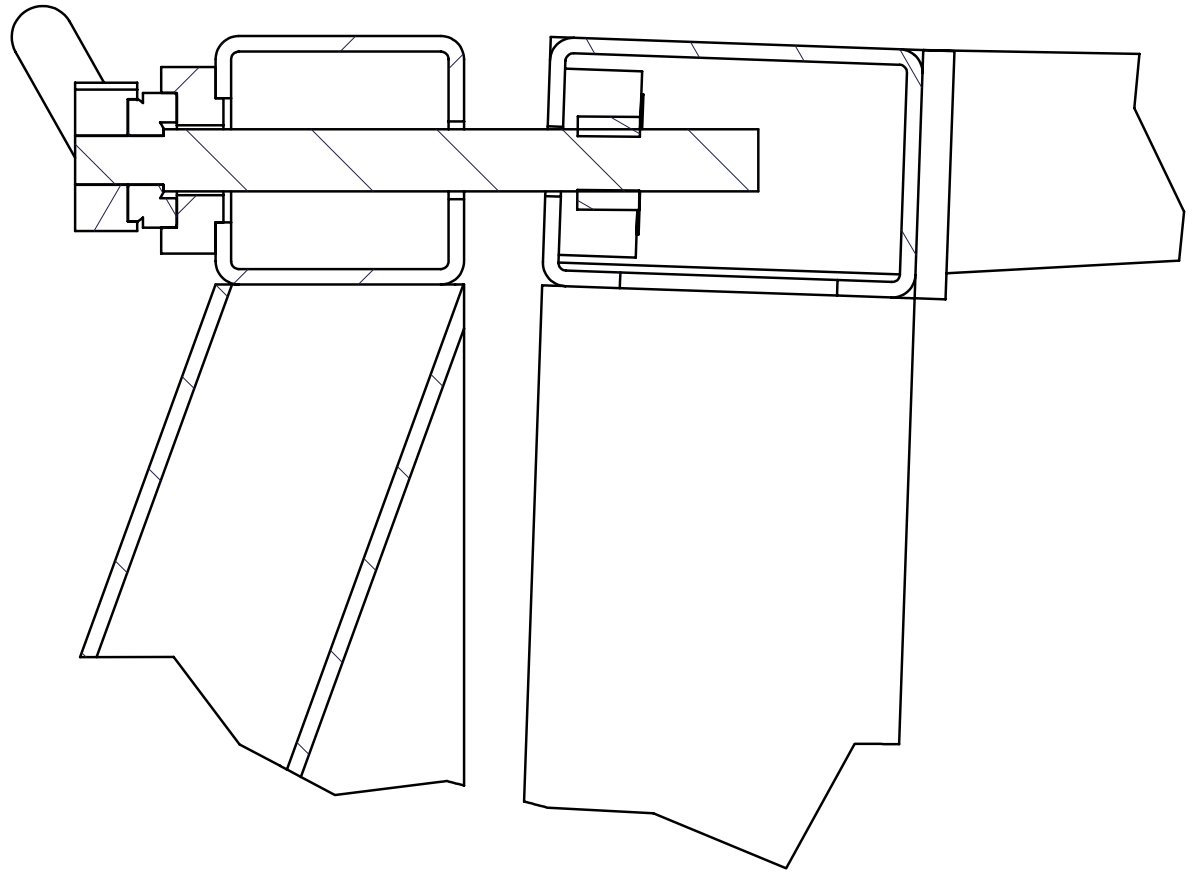
2

1

| | | | |
|-----|------|------|-------------|
| 2 | 1 | 3 | 4 |
| REV | DRWN | CHKD | DATE |
| | | | DESCRIPTION |



SECTION C-C
SCALE 0.09 : 1



| | | | | | | |
|---|---------|--|--|--|----------------|-------------------------------------|
| TOLERANCES UNLESS OTHERWISE NOTED: FRACTIONAL: 0"-6": ±1/64" 6"-24": ±1/32" 24": ±1/16" | | | DRAWN: vernon CHECKED: vernon DESIGNED: vernon ENGINEER: vernon | DATE: 8/27/2003 TITLE: JACK STAND PROJECT CODE: A0003 DWG NO: A5001 | Cassegrain | NEXT ASSY: A0003 NET A 3 5 |
| MATERIAL: | FINISH: | | DECIMAL: X.X: ±0.1000" X.XX: ±0.0100" X.XXX: ±0.0050" X.XXXX: ±0.0001" ANGLES: ±0.5° FINISH: 125 MICRO INCHES BREAK ALL SHARP EDGES & CORNERS 1/16" MAX | | | |